



ACT
Government

Gungahlin Strategic Assessment Annual Report 2022-2023

Annual report for the Gungahlin Strategic Assessment and Biodiversity Plan
for the period 1 July 2022 to 30 June 2023

Environment, Planning and Sustainable Development Directorate, ACT Government

September 2023

Acknowledgements

The Plan Implementation Team would like to extend appreciation to the contributions made to the Annual Report by the Chief Minister, Treasury and Economic Development Directorate, the Suburban Land Agency and the Environment, Planning and Sustainable Development Directorate.

Key Contact

Impact Assessment

Statutory Planning

Environment, Planning and Sustainable Development Directorate

GPO Box 158

CANBERRA ACT 2601

www.planning.act.gov.au

EPDImpact@act.gov.au

Table of Contents

Acknowledgements.....	ii
List of Abbreviations.....	iv
Executive summary.....	1
1. Background	2
1.1 Annual Reporting under the Plan.....	3
1.2 Commitments	3
1.3 Plan Implementation Team	3
2. Corporate outcome: Organisational effectiveness	3
3. Plan Implementation Team (PIT)	3
3.1 Background	3
3.2 Membership.....	4
4. Working groups.....	4
4.1 Internal working group.....	4
4.2 Consultation and engagement groups.....	4
5. Land Release Program.....	6
5.1 Gungahlin Town Centre.....	7
5.2 Jacka.....	7
5.3 Taylor	7
5.4 Throsby	8
5.5 Kenny	8
5.5.1 Nadjung Mada Nature Reserve	8
5.6 Kinlyside.....	9
6. Environmental offsets	10
7. Report on performance by outcome/commitment.....	13
8. Plan Review Report	22
9. Independent Audit	27
10. Financial Reporting.....	28
10.1 Funding expenditure and variations.....	28
10.2 Financial summary	31
10.3 Projected 2023-24 Expenditure	31
10.4 Future Funding.....	32
11. Areas of Non-Compliance	33
Appendix A – Completed Commitments.....	34

List of Abbreviations

ACT	Australian Capital Territory
ACAT	ACT Civil and Administrative Tribunal
ANU	Australian National University
APZ	Asset Protection Zones
BGW	Box Gum Woodland
BOP	Bushfire Operations Plans
CEMP	Construction Environment Management Plan
CMTEDD	Chief Minister, Treasury and Economic Development Directorate
CWD	Coarse Woody Debris
DA	Development Application
DCCEEW	Department of Climate Change, Energy, the Environment and Water (Cwth) (formerly DAWE)
DAWE	Department of Agriculture, Water and the Environment (Cwth) (formerly DoE, superseded by DCCEEW)
DoE	Department of the Environment and Energy (Cwth) (superseded by DAWE and now DCCEEW)
ED	Economic Development (Part of CMTEDD)
EDP	Estate Development Plan
EHW	Environment, Heritage and Water
EOEG	Environmental Offsets Executive Group
EOWG	Environmental Offsets Working Group
EPBC Act	<i>Environment Protection and Biodiversity Conservation Act 1999</i> (Cwth)
EPSDD	Environment, Planning and Sustainable Development Directorate (previously Environment and Planning Directorate and Environment and Sustainable Development Directorate)
ESA	ACT Emergency Services Agency
FVS	Floristic Value Score
GSA	Gungahlin Strategic Assessment
GSM	Golden Sun Moth
HIP	Habitat Improvement Plan
ILRP	Indicative Land Release Program
KMU	Kangaroo Management Unit
LMA	Land Management Agreement
MNES	Matters of National Environmental Significance
NCA	National Capital Authority

NRM	Natural Resource Management
OMP	Offset Management Plan
PCS	ACT Parks and Conservation Services
PIT	Plan Implementation Team
the Plan	Gungahlin Strategic Assessment Biodiversity Plan
PTWL	Pink-tailed Worm Lizard
SLA	Suburban Land Agency
SLL	Striped Legless Lizard
SP	Superb Parrot
TCCS	Transport Canberra and City Services (formerly Territory and Municipal Services Directorate)
WONS	Weed of National Significance

Note: References to government agency names in this report are accurate at 31 August 2023.

Executive summary

Plan Implementation Team chairperson statement

The Territory continued its commitment to implement the Gungahlin Strategic Assessment Biodiversity Plan (the Plan) during the 2022-2023 reporting period, a period that posed ongoing challenges and benefits from above average rainfall for the past few years.

During 2022-23, the ACT Government released land to cater for 616 dwellings and 10,171m² of commercial land in the Gungahlin Strategic Assessment area, including the first residential land release in Jacka stage 2.

While many activities have been undertaken across offset sites within the Gungahlin Strategic Assessment (GSA) area, several successes are of particular note. First, a Dhawura Nggunawal Caring for Country Committee Roundtable took place at Nadjung Mada Nature Reserve (Kenny), with Ministers Rattenbury and Vassarotti and Parks and Conservation Service (PCS) and Suburban Land Agency (SLA) staff in attendance. Outcomes of this roundtable will be captured in reserve planning as well as the Kenny Estate Development Plan. Second, restoration activities are commencing in earnest, guided by restoration plans (developed in collaboration with Greening Australia). Restoration works include groundcover and shrub plantings, and the incorporation of coarse woody debris into the landscape.

A third success to note is the development of a communications package to increase public engagement and understanding of offset sites, including place making signage and story line development for ranger guided activities. Finally, the Wildbark Learning Centre at Mulligans Flat Woodland Sanctuary opened (a joint effort for the ACT Government, the Woodlands Trust, Odonata Foundation, and the ANU). Since opening, the Woodlands and Wetlands Trust have run tours through the surrounding offset area.

While it is important to celebrate the successes above, it is important to highlight above average precipitation into 2022-23 has led to delays in on-ground conservation and land management activities and a general increase in invasive plants across offset sites. To address this challenge, a coordinated management approach is being implemented to prioritise management activities when weather conditions are suitable.

Monitoring on the Superb Parrot, Golden Sun Moth and Striped Legless Lizard continued in 2022-23. Detections of Striped Legless Lizard remain low, but are increasing with two lizards detected in 2022, and a further two lizards detected in 2023. To better understand and support the persistence of Striped Legless Lizard at Nadjung Mada, a translocation plan has been produced. Individuals are translocated from bordering development sites into purpose-built enclosures as required.

Funding allocations increased in 2022-23 financial year compared to previous years. Based on current budget allocations it is expected that expenditure on GSA sites in the 2023-24 financial year will be approximately \$1,066,000 in capital funding. Funding for the 2023-24 financial year has not been officially confirmed at the time of writing, and any variations will be reported in the 2023-24 annual report.

George Cilliers
Chair – Plan Implementation Team
Environment, Planning and Sustainable Development Directorate
14 September 2023

1. Background

In October 2012, the ACT and Commonwealth governments commenced a strategic assessment under Part 10 of the *Environment Protection and Biodiversity Conservation Act 1999* (the EPBC Act). The focus of the strategic assessment was to assess the potential impacts from development of the remaining identified green-field sites in Gungahlin, the northern-most district in the ACT, on Matters of National Environmental Significance (MNES) protected under the EPBC Act.

The [Gungahlin Strategic Assessment Biodiversity Plan](#) (the Plan) was endorsed on 20 June 2013 and the actions associated with the development were approved on 17 July 2013. As a result of the approval, the Plan has streamlined the development process by removing the need for site-by-site assessment of MNES.

The Plan outlines the activities required to complete the urban development of the Gungahlin district. Accordingly, the Plan is defined by the establishment and implementation of measures to affect urban development and biodiversity conservation within Gungahlin. The Plan is relevant to the following areas as they appear in the Territory Plan:

- Urban development areas of Kenny, Throsby, Moncrieff, Jacka (north), Taylor;
- Urban development areas (currently zoned Commercial (CZ2) and Mixed Use (CZ5)) in the Gungahlin Town Centre (east precinct); and
- Conservation areas, including broad acre areas, being additions to Goorooyarroo and Mulligans Flat Nature Reserve, Kenny Nature Reserve, Horse Park north broad acre, Kenny broad acre and Kinlyside Nature Reserve.

The assessment area and Plan in summary is presented as Figure 1.

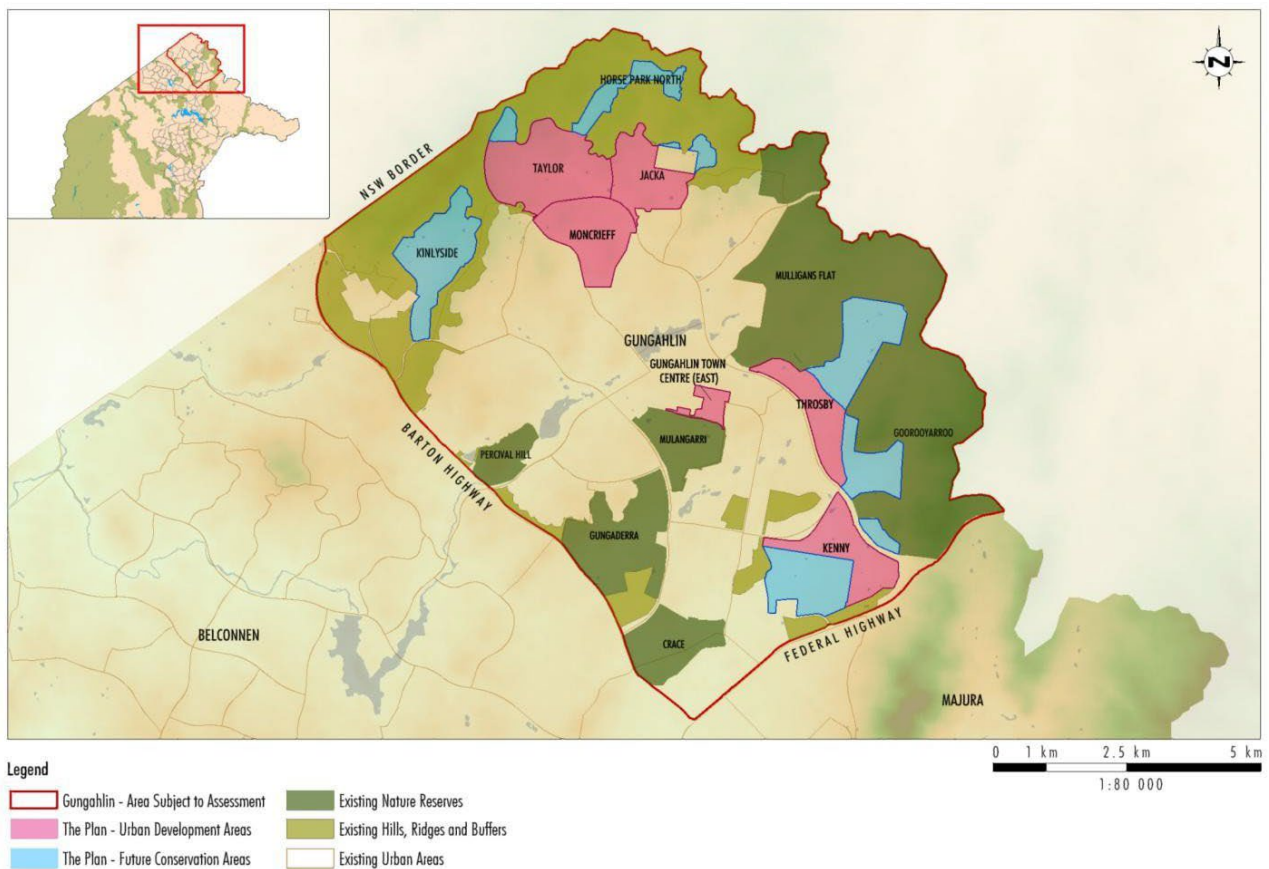


Figure 1: Overview of the Plan

1.1 Annual Reporting under the Plan

This annual report is a comprehensive report on the activities related to the Plan throughout the preceding year, being 1 July 2022 to 30 June 2023. The annual report provides information about ACT Government activities and performance against the commitments of the endorsed Plan.

1.2 Commitments

Section 7 of the Plan identifies a range of commitments to be undertaken by the ACT Government targeting MNES affected by urban development in Gungahlin on the basis of analysis presented in the Gungahlin Strategic Assessment - Assessment Report. Commitments in the Plan build upon the long history of forward and strategic environmental planning in the ACT around the avoidance and mitigation of environmental impacts resulting from development.

In summary, the commitments include:

- Avoidance of areas that support habitat for MNES on land presently designated by the Territory Plan as developable (including RZ1 – Suburban and NUZ1 – broadacre);
- Increased investment in habitat enhancement beyond the minimum level required by ACT legislation; and
- Increased investment in research targeted at the affected MNES and guided by action planning objectives.

Direct impacts on MNES have either been avoided (Pink-Tailed Worm Lizard, Superb Parrot breeding sites, important migratory bird habitat) or minimised through protecting core, well connected endangered woodland or habitat (Box Gum Woodland, Golden Sun Moth or Striped Legless Lizard habitat).

The commitments from the Plan and the status of each commitment are presented in [Table 2](#) of this report and completed commitments at the end of the 2022-23 reporting period are attached to this report (**Appendix A**) for reference.

1.3 Plan Implementation Team

The Plan Implementation Team (PIT) is responsible for both implementing the Plan and also ensuring that accurate records are maintained for all activities that are undertaken in relation to implementation of the Plan. PIT activities are described in the PIT Charter. Further information on the PIT is described in the relevant section of this report.

2. Corporate outcome: Organisational effectiveness

The strategic assessment approvals monitoring, and implementation is the responsibility of the PIT, which was coordinated by the Impact Assessment team within the Environment, Planning and Sustainable Development Directorate (EPSDD) during the 2022-23 financial year.

3. Plan Implementation Team (PIT)

3.1 Background

The PIT is responsible for all aspects of implementation of the Plan in addition to ensuring accurate records are maintained of all activities that are conducted in relation to implementation of the Plan. Commitment 6 of the Plan describes the requirement of the ACT Government in establishing a PIT.

The PIT was established in 2014 and was a multi-agency group drawn from executives within the EPSDD (former Environment and Planning Directorate), Chief Minister, Treasury and Economic Development Directorate (CMTEDD) and coordinated by Economic Development (ED), CMTEDD.

However, from 1 July 2016 the responsibility for compliance monitoring and reporting was assigned to Statutory Planning (previously Planning Delivery), EPSDD. The PIT membership was reviewed in response to the ACT Directorate restructure. The revised PIT membership and Charter was approved by the former Commonwealth Department of Environment on 13 January 2017.

The PIT will operate for the 20-year life of the Plan. Upon conclusion of the Plan, ongoing management responsibility will divest in the appropriate ACT Government agencies. The PIT will ensure the appropriate transfer and accessibility of information gathered over the life of the Plan. The PIT will operate with a mandate to ensure a whole-of-government approach to implementation of the Plan.

3.2 Membership

PIT members include executive representation from EPSDD and CMTEDD. As of 30 June 2023, the PIT comprised:

- Statutory Planning, EPSDD (Lead Directorate);
- Environment, Heritage and Water Division, EPSDD;
- Suburban Land Agency, EPSDD;
- Policy and Cabinet, CMTEDD; and
- Treasury, CMTEDD.

4. Working groups

4.1 Internal working group

The Gungahlin Strategic Assessment Working Group and Environmental Offsets Working Group (EOWG) comprises members from multiple divisions within the EPSDD. These working groups meet during the year to discuss implementation and delivery of the commitments under the Plan. The Environmental Offsets Executive Group (EOEG) provides cross directorate executive oversight of offsets within the ACT. This includes the provision of advice and recommendations on offset matters.

4.2 Consultation and engagement groups

The ACT Parks and Conservation Service (PCS) undertakes extensive stakeholder engagement in relation to the management of offset sites, throughout planning, monitoring, research, and operational management processes.

Stakeholder engagement has been increasing in areas surrounding the Kinlyside Nature Reserve and Jacka, Taylor, and Horse Park North avoidance areas, where surrounding residential development continues. The development of new suburban estates adjacent to offset sites has provided an opportunity for PCS Rangers to engage with these new communities.

Public engagement over the past year has focused on community education on the natural values surrounding resident's homes and also encouraging participation. For example, PCS has:

- Hosted Canberra Bushwalking Club for a Spring Wildflower ramble in Taylor Offset site.
- Hosted volunteers and schools, work experience students to assist with restoration efforts in Nadjung Mada Nature Reserve.
- Participated in community activities at Margaret Hendry School which included seed and planting activities.
- Installed three new totem signs to help identify Taylor and Horse Park North Offset areas as places of natural value.
- Displayed Activities Declaration information on these signs to promote desired visitor behaviours.

Ongoing engagement between PCS and SLA Communications Team ('Mingle'), has enabled PCS to deliver and promote offset and conservation messaging via community events, online and in newsletter articles. In particular, a suite of community engagement tools has continued to be improved over 2022-2023 for deployment at Taylor that are focused on enhancing community understanding of the conservation values at their doorstep. Similar opportunities will be explored in the adjacent north Jacka.

Further, PCS participated in the Waterways Country Symposium, a community project run by local consultants engaging with Ngunnawal community members with co-sponsorship by SLA. This symposium led on to the Dhawura Ngunnawal Caring for Country Committee Roundtable with Ministers Rattenbury and Vasserotti, SLA & PCS. This was facilitated by community consultants and hosted on Country at Nadjung Mada Nature Reserve. Outcomes of these events will be considered in planning of the reserve and by SLA for the development of the Kenny Estate Development Plan (EDP).

In 2022, the Wildbark Learning Centre at Mulligans Flat Woodland Sanctuary opened. The centre is a joint effort between the ACT Government, the Woodlands Trust, Odonata Foundation, and the ANU and was built as a "gateway" to Mulligans Flat woodlands and ecological restoration. Since opening, the Woodlands and Wetlands Trust have run tours through the surrounding offset area. Additionally, several social media engagement posts have been made on Facebook about management activities such as ecological burns, weed management, planting, and seeding projects. Many of these activities have engaged volunteers including the Mulligans Flat Parkcare group. The partnership published the [Flourish Nature, Flourishing Culture - Mulligans Flat Woodland Sanctuary Strategy 2050](#) for the Sanctuary. In 2021, the Nadjung Mada Nature Reserve was gazetted, and PCS establishment activities commenced. Concurrently, commencement of the East Gungahlin High School development on the northern boundary of the reserve has resulted in ongoing stakeholder discussions, particularly relating to storm water management as construction progresses.

Early engagement with SLA ahead of planning for the future residential development of Kenny has resulted in the drafting of Interface Guidelines to better direct planning of suburban development that interacts with nature reserve boundaries, as well as the progression of modelling to explore the impacts of altered ground and surface water on conservation values. Engagement with SLA has been ongoing for this reporting period.

PCS has also worked closely with other key stakeholders who assist with the management of the Gungahlin Strategic Assessment offset sites, including:

- Non-Government Organisations such as WaterWatch, Friends of Grasslands, ParkCare and Canberra Ornithologists Group.
- Greening Australia (PCS worked with Greening Australia to develop a restoration plan for Throsby and Nadjung Mada Nature Reserve which was finalised in February 2023).
- A selection of Aboriginal businesses, contracted to deliver restoration works.
- The Dhawura Ngunnawal Caring for Country Committee.
- Representative Aboriginal Organisations, as declared under Section 14 of the *Heritage Act 2004*, including:
 - *Buru Ngunawal Aboriginal Corporation*;
 - *King Brown Tribal Group*;
 - *Mirrabee*; and
 - *Ngarigu Currawong Clan*.
- Current lessees and agistment license holders (including Kinlyside Nature Reserve and Kenny development area).
- The Woodlands and Wetlands Trust (opening of the new Wildbark Centre in late 2022).

- Universities such as the ANU, University of Canberra and Canberra Institute of Technology.
- Utility providers with infrastructure located near or within reserves, such as ActewAGL, and ICON water.
- Office of Nature Conservation (Environment, Heritage and Water, EPSDD) assisted with small mammal surveys in North Gungahlin Woodlands and have provided ongoing ecological advice and expertise.
- Canberra Orchid Society who undertook surveys across the Throsby Offset areas and through Goorooyarroo Nature Reserve.

Other ACT and Commonwealth Government agencies that are engaged through the management of the Gungahlin Strategic Assessment area include:

- [ACT Heritage Council](#), for advice and approvals that are required for Aboriginal heritage management matters. The ACT Heritage Council provided advice and approvals for heritage matters in Taylor and Horse Park North Offset areas. A Heritage Festival Walk was conducted in the Throsby area.
- [Australian National Herbarium](#), to the monitoring team submitted specimens to the herbarium, including a record of a new species for the ACT from Throsby North (*Gnaphalium indutum* – Tiny Cudweed), as well as collaboration for confirmation of flora species ID's including a species of orchid that is being described (currently *Thelymitra* sp. aff. *cyanapicata*).
- [Transport Canberra and City Services Directorate \(TCCS\)](#), regarding maintenance of grass, roads and tracks around suburbs and nature reserves and collaboration on upgrading of Wells Station Road.
- SLA, especially in relation to boundary issues where developments abut nature reserves or avoidance areas.
- Education Directorate for consultation and discussion relating to the development of the East Gungahlin High School.

5. Land Release Program

The ACT Government prepares a five-year Indicative Land Release Program (ILRP) setting out the ACT Government's intended program of residential, commercial, industrial and community land releases. The Program is indicative and is subject to change as market conditions alter or as ACT Government priorities adjust. The Planning and Urban Policy Division (previously Planning, Land and Building Division) of EPSDD is responsible for preparing the program in conjunction with other relevant Territory directorates.

The ACT Government plans for the supply and release of land, taking account of factors such as forecast population changes, household changes, demand for land and the capacity to cost effectively deliver key infrastructure and services.

The five-year ILRP enables the ACT Government to deliver on its economic and social strategies for the Territory.

The [Indicative Land Release Program 2022-23 to 2026-27](#) included the following release targets for Gungahlin during 2022-23:

- 700 dwellings; and
- 10,171 m² of commercial site area.

The actual 2022-23 land release for Gungahlin was:

- 616 dwellings; and
- 10,171 m² of commercial site area.

The minor divergence between the ILRP and actual releases achieved relate to impacts of the ongoing planning of the Gungahlin Town Centre East which is discussed below.

More information about the Indicative Land Release Program is available on the following website:

<https://www.planning.act.gov.au/planning-our-city/land-release>.

5.1 Gungahlin Town Centre

The Gungahlin East project approved in 2017, finished civil construction in 2018-19, with site releases to developers and occupiers commencing in February 2019. The remaining commercial, community and residential sites will be sold in line with the ILRP.

[Territory Plan Variation 364](#) (TPV364) including amendments to the Gungahlin Precinct Map and Code came into effect 24 June 2022 and will apply to future Development Applications (DA) in this area.

Development of the Gungahlin Town Centre is a matter of note to relevant stakeholders. Since October 2022, ACT Government has progressed a place-based engagement to help inform future releases. The engagement will support the outcomes TPV364 and the aspirations of the new planning system, helping improve line-of-sight from planning strategy to development outcomes.

The first milestone of this engagement, the Place Ambition Report for Gungahlin Town Centre East has now been released. The final Design and Place Framework will be released later this year. The Place Ambition and the Design and Place Framework will together guide the future development of the precinct.

As a result of this engagement process, there was some impacts on releases scheduled for the Town Centre in the 2022-23 financial year, with 216 of the 300 scheduled dwellings being released.

5.2 Jacka

The future urban areas of Jacka are expected to deliver around 700 additional residential dwellings. A DA covering this first stage (500 dwellings) was approved on 20 October 2021. A subsequent application for review of this decision was lodged by a third party on 18 November 2021, to the ACT Civil and Administrative Tribunal (ACAT). The ACAT proceedings were not finalised until March 2022, with a revised Notice of Decision approving the DA taking effect 15 July 2022.

Civil construction (Jacka 2) commenced in early 2023, with the first land releases totalling 400 dwellings released in late 2022-23. The first residents are not expected to move in until 2024.

40 Yellow box trees felled for this development were transported to 2 GSA offset sites (HPN & Nadjung Mada) & 1 Eastern Broadacre Strategic Assessment (EBSA) site (Bonshaw) and located within Yellow Box - Red Gum woodland as coarse woody debris, contributing to the structural woodland habitat of these areas.

5.3 Taylor

The major civil and landscape works in Taylor have been completed, with land release in accordance with the ILRP also completed. Several minor infrastructure improvements are underway including edge treatments at several locations along the urban edge interface with the nature reserve to mitigate illegal access, dumping and other impacts.

Boundary fences between PCS and TCCS custodianship, recreational way finding signage and the

western Taylor fire trail are expected to all be implemented as final works in 2023-2024. Planning, design, and procurement for these actions has been completed.

The Margaret Hendry Primary School, opened in 2019 and future High School is under construction expected to be open for the 2025 school year. The Local Centre site is currently for sale under a tender process and is expected to conclude by September 2023.

5.4 Throsby

Throsby estate construction was completed in 2017. All land release and sales in accordance with the ILRP have been completed, with the final block settled in September 2021.

The 'Home of Football' will be built at Throsby and will be the new headquarters for football in the ACT. It will feature multiple outdoor fields, indoor futsal courts, office space for Capital Football, and associated amenities.

5.5 Kenny

The first land being developed in Kenny is for the new East Gungahlin High School, which is currently under construction and is expected to be open in 2024. The proposed suburb of Kenny was managed under an agistment licence since the uplift of the rural lease in 2020. An initial localised release to facilitate delivery of the future East Gungahlin High School was scheduled for 2022-23.

SLA accepted handover of Kenny in 2022-23 to facilitate planning, development and land releases. Preparation of an Estate Development Plan (EDP) is expected to commence in 2023-24.

At this stage, it is expected Kenny will accommodate around 1500 dwellings, with a mix of housing choice, including affordable, public and community housing, along with education facility, and local commercial operations. The ecological and hydrological issues currently being investigated may have an impact on the future EDP.

5.5.1 Nadjung Mada Nature Reserve

The Territory Plan Variation ([379](#)) to rezone land within the future suburb to formally establish the Kenny Nature Reserve (now Nadjung Mada Nature Reserve) commenced during 2020-21 and was approved by the Minister for Planning and Land Management on 2 August 2021. The Nadjung Mada Nature Reserve environmental offset site, as presented in the Plan Variation and adjacent indicative land uses is presented in Figure 2.

There are a range of ecological and hydrological issues at Kenny that are being further investigated by EPSDD and SLA to ensure the protection of the recently created Nadjung Mada Nature Reserve adjacent to the future urban area of Kenny. Next reporting period an investigation report of hydrological changes within Nadjung Mada Nature Reserve will be delivered. This project evaluates how changes to surface water and groundwater hydrology resulting from urban development may impact Box Gum Woodland (BGW) and Striped Legless Lizard (SLL) habitat in the reserve and will make recommendations for how to manage and mitigate risks through actions in the Kenny development area and/or within the reserve.

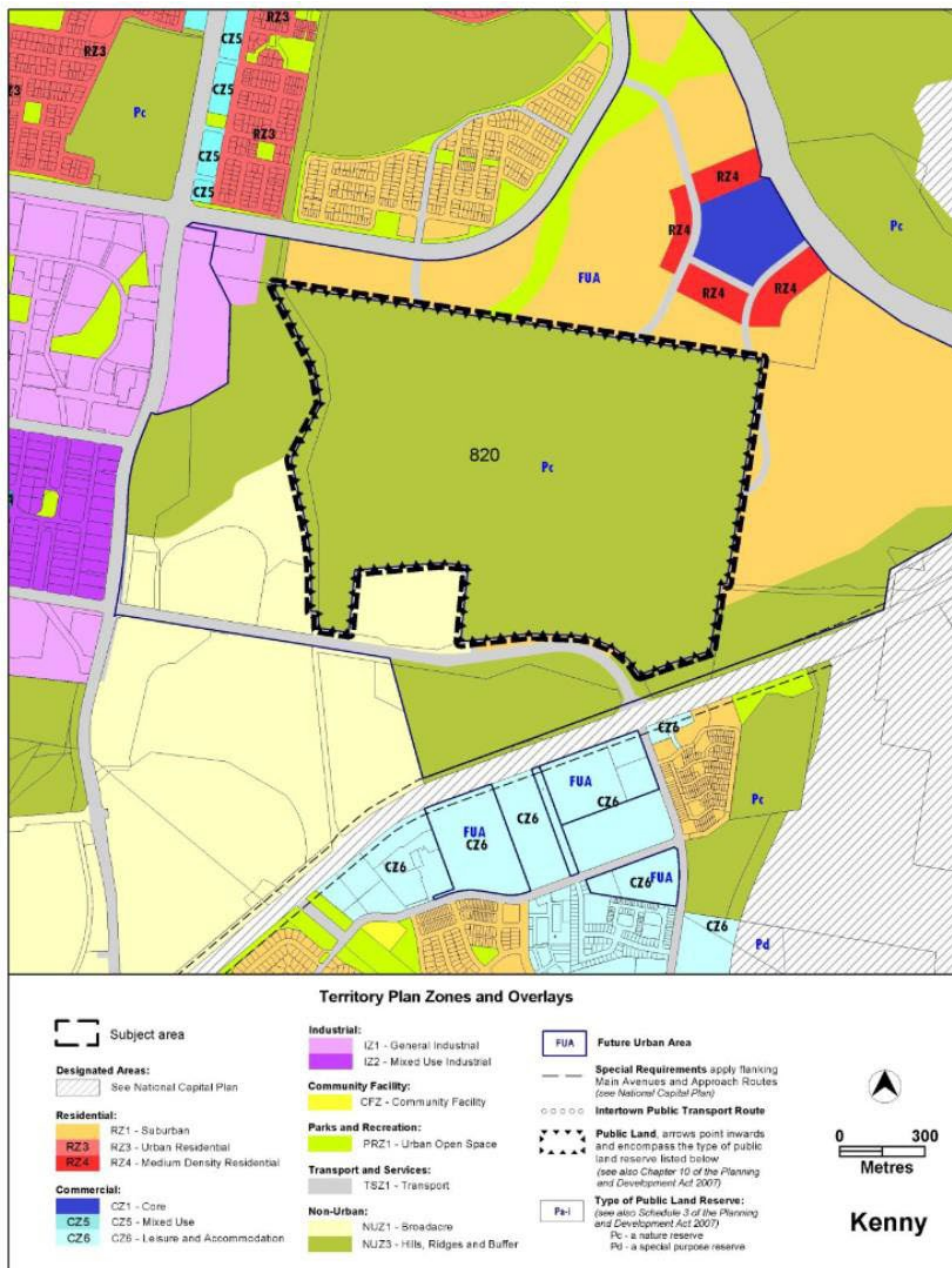


Figure 2: Kenny offset area and potential land use zones for Kenny

5.6 Kinlyside

The Kinlyside Nature Reserve was created and gazetted through a Territory Plan Variation on 6 November 2014. The Nature Reserve includes a large section of land adjacent to Casey. The primary objective of establishing the offset area was to permanently protect and enhance the extent and quality of the White Box - Yellow Box - Blakely's Red Gum Grassy Woodland community and the population and habitat of the Golden Sun Moth (GSM). Kinlyside Nature Reserve includes some areas of land managed under rural lease for agricultural purposes. These leases have been periodically monitored and reviewed to ensure optimal conservation and biodiversity outcomes in line with the Plan and the [Kinlyside Offset Management Plan](#). During this reporting period, the Minister made the decision to withdraw nature reserve lands managed under rural lease. The boundary of the nature reserve is currently being surveyed to finalise submission of Deposited Plans to the Office of the Surveyor General, formalising the withdrawal. Updates on this process will be provided in the next annual report.

6. Environmental offsets

Environmental offsets are measures that compensate for residual adverse impacts of an action on the environment. Offsets provide environmental benefits to counterbalance the impacts that cannot be avoided once avoidance and mitigation measures have been considered. Offsets can take the form of direct offsets, indirect offsets or other compensatory measures. **Table 1** below highlights the condition of offset sites established through the GSA. The information presented in **Table 1** is based on monitoring data gathered by ACT Government ecologists and consultants. Further details are in **Table 2** where links to source data are provided.

It should be noted that this does not include other offset areas located within the GSA region that relate to developments outside the scope of the Strategic Assessment, such as Budjan Galindji Nature Reserve offset area (previously Franklin Grasslands) which offsets the impacts from the Dudley Street upgrade in Yarralumla (EPBC 2017/8072).

Table 1 – Gungahlin Strategic Assessment Offset Areas – Condition Status

Offset name	MNES	Condition status at 2022-23
Kinlyside	Box Gum Woodland (BGW)	The BGW within Kinlyside continues to represent the largest area of EPBC BGW vegetation within any offset area in the ACT. Results from the spring 2022 survey season indicate that native ground cover has continued to decrease significantly since 2020 in the EPBC woodlands. In the 16.2 and 16.4 EPBC PCT vegetation types, average native cover has fallen below the benchmark EPBC requirement of 50% cover. Continued wet conditions has contributed to the increase in the cover of exotic perennial grasses (e.g., Yorkshire Fog (<i>Holcus</i>) and Serrated Tussock), leading to decreased cover of native species.
	Golden Sun Moth (GSM)	In the past year, average grass height and thatch depth has remained stable and within benchmark levels across the EPBC BGW areas. Serrated Tussock and St John’s Wort weed species have been flagged with PCS as being above asset protection levels for 2022 in the EPBC BGW at Kinlyside. Serrated Tussock numbers are relatively stable, whereas from 2021 to 2022 seasons, St John’s Wort density increased dramatically across 16.1 and 16.4 PCT zones.
	Pink-tailed Worm Lizard (PTWL)	Kinlyside continues to represent some of the best quality GSM habitat in northern ACT, with very high cover of Wallaby Grass across the site, and grass tussock height and bare ground cover favourable to the species. However, due to another wet and cool summer, unfavourable conditions for GSM adult emergence continued. In 2022, very few individuals (two individuals total) were recorded across the site. This is comparable to records in unfavourable conditions of 2021 (three individuals total). However, a single year of data should not be used to infer a decline in this species given the specific conditions required for emergence and ability of the larvae to remain dormant underground. Historically, a stable population and distribution of GSM has been recorded at Kinlyside (2015 – 2020). It is expected that this recent decline in population density and occupancy is due to seasonal variation in populations arising from unfavourable annual climatic influences. Further surveys for GSM will be undertaken during the flying season of 2023 – 24 to give an insight into the population at this site. As all impacts to PTWL were avoided through the GSA, there was no requirement to offset. Despite this, PTWL habitat is known to occur in Kinlyside (four individuals recorded by Biosis in 2012) and therefore was subject to early mapping and monitoring in 2016, with presence of one individual recorded on the site in 2016. Due to access restrictions to Kinlyside in early 2023, the intended PTWL monitoring program infrastructure was not able to be implemented. As such, PTWL population surveys using a newly developed low-impact technique is intended to be set up in late 2023 for survey in future years. With regards to management, a focus was on control of St John’s Wort (a constant pressure at this site requiring significant financial investment). Pest rabbit monitoring was unable to be completed in spring due to wet conditions, or in autumn, despite requests by PCS for current lessees and agistment licence holders to undertake this action. From March 2023, PCS operations at the site were paused due to sensitivities around reserve withdrawal processes. This also impacted fire trail and drainage works on the site.
Taylor	BGW	The high level of native ground cover in the Taylor offset has been maintained within the 16.1 EPBC PCT in 2022 (99% cover). However, the level of native cover at EPBC 16.4 PCT has reduced from 92% in 2021 to 67% in 2022. This is still above benchmark condition but is reflective of one monitoring point having very high cover of exotic perennial grasses (<i>Holcus</i> and <i>Phalaris</i>). The monitoring point in question is in the south, adjacent to the new urban development (thus subject to higher levels of disturbance due to proximity to the urban edge).
	GSM	A combination of removal of livestock grazing and cool, wet La Niña conditions has contributed to a mild recovery of average grass height in 2021 and 2022 seasons. As such the EPBC BGW now falls within benchmark levels for average grass height. St. John’s Wort has steadily increased between 2021 and 2022 to be well above asset protection levels in the EPBC BGW areas. Similarly, Serrated Tussock has jumped above recommended asset protection levels in 2022 (despite seeing a reduction in 2020 and 2021). Given highly unfavourable survey conditions and season, GSM targeted surveys were not undertaken at Taylor in 2022. Further opportunistic surveys for GSM may be undertaken during the flying season of 2023 – 24, should resourcing permit. However, GSM do not have a monitoring commitment for Taylor offset site in 2023 – 24. With regards to management, extensive plantings of both <i>Carex</i> and <i>Poa labillardierei</i> were undertaken during spring 2022, and coarse woody debris was incorporated into the landscape as a restoration action. Another large focus for this reporting period was the development of a communications package, including place making signage and story line development for ranger guided activities, to increase public engagement and understanding of the site.

Offset name	MNES	Condition status at 2022-23
Horse Park North	BGW GSM	<p>The Horse Park North offset area continues to support some of the highest quality BGW across ACT offset areas. The BGW area has maintained a high proportion of native ground cover, and an above benchmark Floristic Value Score across most of the site. One exception to this is a low-quality (non EPBC 16.8 PCT) area in the south – adjacent to the new urban development – that has a high cover of Yorkshire Fog. The 2022 monitoring season saw a slight decrease in native diversity due to competitive non-natives but remained within recommended EPBC levels.</p> <p>Weeds of concern densities have remained high but stable within the EPBC BGW at Horse Park North. Serrated Tussock density remains above asset protection levels in EPBC 16.1, and St John’s Wort decreased from 2021 to 2022 but remains above recommended levels in 16.4.</p> <p>GSM monitoring is not a core commitment of this offset site, however an opportunistic target survey for GSM was undertaken in 2022. No individuals were recorded however, a single year of data should not be used to infer absence in this species, especially given the unfavourable emergence conditions for the species this year. Further opportunistic surveys for GSM may be undertaken during the flying season in 2023-24, should resourcing permit, to give an insight into the population at this site.</p> <p>With regards to management, restoration works undertaken at Horse Park North included the incorporation of coarse woody debris into the landscape and planting of native species. Ongoing maintenance activities were provided.</p>
Jacka		The GSA does not identify any MNES supported by Jacka offset site. The site is included for strategic benefit, primarily habitat connectivity. Therefore, no monitoring surveys are conducted at this site.
Throsby North	BGW GSM Superb Parrot (SP)	<p>The EPBC BGW in Throsby North remains in good condition with high native ground cover and high floristic diversity. The EPBC PCT zones 16.1 and 16.4 were above benchmark for native cover and diversity in 2022 (meeting the EPBC requirements). However, EPBC PCT 16.2 has decreased in diversity since 2021 and does not currently meet the EPBC condition requirements for native ground cover, with a 2022 average of 17% cover (over 50% is required).</p> <p>The Canberra Orchid Society was commissioned by ACT Natural Resource Management (NRM) to undertake a survey of orchids during 2021-22 across the extended sanctuary that includes the offsets. The report on the survey was delivered in early 2023. The survey recorded 17,246 plants from representing 25 species and 9 genera. One species, <i>Thelymitra sp. aff. cynapicata</i>, is yet to be described and has been sent to a herbarium for further investigation.</p> <p>A 34-hectare ecological burn was undertaken in Throsby North to reduce biomass, open inter tussock space for native grasses and forbs, and to provide more suitable habitat for GSM. The site was then seeded with a mix of grass and forbs across approximately 5 hectares of the burn area. Seeding on the site included <i>Themeda triandra</i>, <i>Austrostipa bigeniculata</i>, <i>Bothriochloa macra</i>, and <i>Rytidosperma</i> species. Plantings on the site included <i>Juncus</i> species, <i>Poa labillardierei</i>, <i>Carex appressa</i> and <i>Eryngium</i>.</p> <p>Weed control was undertaken for St. John’s Wort, Sifton Bush, Patterson’s Curse and Serrated Tussock. Weed densities remain stable/contained across the EPBC BGW areas of Throsby North, but St. John’s Wort has been flagged as being above asset protection levels for 2022 in EPBC zone 16.1.</p> <p>Throsby North continues to represent some of the best quality GSM habitat in northern ACT. However, due to another wet and cool summer, unfavourable conditions for GSM adult emergence continued in 2022 and very few individuals (2 individuals total) were recorded across the site. This is comparable to records in unfavourable conditions of 2021 (1 individuals total). However, a single year of data should not be used to infer a decline in this species given the specific conditions required for emergence and ability of the larvae to remain dormant underground. Historically, a stable population and distribution of GSM has been recorded at Throsby North (2015-2020). It is likely that this recent decline in population density and occupancy is due to seasonal variation in populations arising from by unfavourable annual climatic influences. Further surveys for GSM will be undertaken during the flying season of 2023-24 to give an insight into the population at this site.</p> <p>While there are some potential nesting trees, no Superb Parrots have been recorded nesting at Throsby North. This is likely due to their preference to nest in proximity to each other, and with more suitable nesting trees being located at Throsby East.</p>
Throsby East	BGW GSM SP	<p>The EPBC BGW areas (16.2 zone) in Throsby East continue to meet the condition requirements for EPBC status, and additionally have seen improvements in native vegetation between 2021 and 2022 from 51% to 66%. A large ecological burn was undertaken in Throsby East in early 2022 in non-EPBC BGW areas (16.5 and 16.8 zones). As a result, floristic diversity increased in the following Spring. Average grass height continues to be above recommended levels across the whole site, but this is to be expected following three years of wet and cool conditions.</p> <p>In the 2022 survey year, no high threat weeds were recorded over asset protection levels across the entire Throsby East site. Weed control activities continued for Saffron Thistle, African Lovegrass, <i>Phalaris</i>, and Serrated Tussock. Land managers have been notified that St. John’s Wort is emerging as a potential weed threat in 2023, after being recorded in low densities (>170 plants per hectare) in spring.</p> <p>In addition to weed control, 17 head of cattle grazed across the site for four months. Appropriate grazing pressure aids in regulation of grass growth, encourages flowering and maintains inter-tussock spaces which in turns maintains habitat for grassland fauna.</p> <p>A targeted survey for GSM was undertaken in the 2022 survey season, which yielded no records. However, Throsby East is historically known to support very low density of GSM and the conditions in 2022 were extremely unfavourable. A single year of data should not be used to infer a decline in this species, given the specific conditions required for emergence and ability of the larvae to remain dormant underground. Further surveys for GSM will be undertaken during the flying season of 2023-24 to give an insight into the population at this site.</p> <p>Throsby East supports one of only two known breeding colonies of SP in the ACT. There is a high density of quality nesting hollows in stands dominated by <i>E. rossii</i> and <i>E. blakeyli</i>. For the first time since monitoring commenced, SPs experienced complete breeding failure at the Throsby East colony. There were seven (7) attempts to nest (the lowest breeding participation recorded since 2016 when construction of the Throsby development commenced) and all failed to produce young. This is a dramatic and unprecedented event in the breeding history of SPs within the GSA and the ACT more</p>

Offset name	MNES	Condition status at 2022-23
		<p>broadly. As noted for the suppressed breeding output at Throsby East in 2021, the most likely driver of this event relates to La Niña, with significantly wetter conditions interacting with competitor/predator dynamics. For example, researchers observed lower availability of suitable nesting sites due to flooded hollows, which increases competitive pressure with hollow-using fauna among the remaining nest sites.</p> <p>Further, higher rates of nest predation were observed partly due to shifts in predator distributions into the colony area (e.g., Krefl's Glider) or from increased exposure where nestlings move closer to the hollow entrance to avoid wet hollow conditions making them vulnerable to avian predators (e.g., Australian Raven). In response to the breeding results of 2022, no immediate remedial action or intervention is recommended. Intensive monitoring of the breeding colony should continue as conditions dry out (2023 season and beyond) to determine if SPs can recover their reproductive output. In the interim, an Honours project will commence in September 2023 to investigate competitive interactions at known SP nesting sites to identify, in greater detail, the species exerting greatest competitive pressure on SPs. Results will help to inform future management of hollow competitors, if required. A single, custom-designed nest box was added to the colony site in 2020, no interest or use of the nesting box has been recorded to date.</p>
Kenny Broadacre	BGW Striped Legless Lizard (SLL)	<p>There has been a decline in native ground cover at Kenny Broadacre. In particular, within the EPBC BGW (PCT 16.2 zone) there has been a significant drop from complete cover of natives (100%) in 2019 and 2020, to 20% in 2021, then 11% in 2022. This decline is attributable to annual exotic Ryegrass and exotic perennial grasses (e.g., <i>Phalaris</i>) outcompeting natives. As a result, this PCT area no longer meets the condition requirements for EPBC status. Land managers have been notified and active management is expected to increase the native cover to above benchmark levels, however it may take some time to recover.</p> <p>In the 2022 survey year, no high threat weeds were recorded as being over the asset protection levels in BGW at Kenny Broadacre, though St John's Wort has remained at low densities. Serrated Tussock, previously an emerging threat at the site, has not been recorded at Kenny Broadacre since 2020.</p> <p>17 head of cattle grazed across the site for four months. Appropriate grazing pressure aids in regulation of grass growth, encourages flowering and maintains inter-tussock spaces which in turns maintains habitat for grassland fauna.</p> <p>The abundance and distribution of SLL at Kenny Broadacre remained stable in 2022, recording the same low levels as 2020 and 2021. A single individual was recorded (noting that this is still lower than 2018 levels).</p>
Nadjung Mada (Kenny)	BGW SLL SP	<p>Nadjung Mada Nature Reserve came under PCS management in the 2020 -21 seasons, following concerns regarding site condition - particularly grass height in 2019. Nadjung Mada Nature reserve continues to represent the lowest quality EPBC BGW of all the GSA areas, with floristic diversity being very poor. Although still within EPBC condition requirement levels, there was a significant reduction in native cover within the EPBC PCT 16.2 to just 54% in 2022. This is due to an increase in the exotic perennial grass <i>Phalaris</i> which favours cool and wet conditions of La Niña.</p> <p>There has been a decline in Serrated Tussock across the site, with effective management programs reducing density in all PCT zones and eliminating it in PCT 16.6 and 16.8. No weed species of concern are above asset protection levels in EPBC BGW. Only low densities of St John's Wort and Serrated Tussock were recorded in EPBC zone 16.2 at Nadjung Mada. Although reduced through targeted management programs, a high density of several Weeds of National Significance (WONS) was recorded in PCT 1.3 and 1.4 (non EPBC grassland SLL habitat) in 2022, including African Lovegrass, St John's Wort and Serrated Tussock.</p> <p>A grazing management plan and restoration plan (drafted by Greening Australia) has been finalised and will inform site management activities. PCS staff undertook grazing training to improve their skill and knowledge in this area.</p> <p>Since 2019, with the removal of grazing due to a change of tenure to PCS management in 2020 and assisted by three years of wet and cool conditions, there has been an impressive recovery of average grass height across the reserve. The average grass height increased from 2.5cm across the site in 2019 to around 23-25cm in 2020, 2021 and 2022. This is above the upper recommended height of 12cm. However, at this site, the longer grass and bigger tussock structures likely benefits the SLL population; in 2021, the highest number of SLL were detected since 2018 with four individuals recorded and in 2022, three SLL were detected. During additional monitoring as part of a microhabitat study for SLL, an additional four SLL were also found during the 2022-23 field season; two in Nadjung Mada and two in the woodland to the west of Nadjung Mada. Although the population of SLL at this site remains extremely low, detections in 2021 and 2022 represent an increase from the zero recorded in 2018 and 2019, and one recorded in 2020.</p> <p>As a requirement of the translocation plan for SLL, a microhabitat study was undertaken in Nadjung Mada in the 2022 survey season to better understand the habitat requirements of SLL. This study undertook additional population surveys and collected detailed soil texture sampling and small-scale habitat variables. The results of this microhabitat study are currently being analysed, which will be incorporated into the upcoming SLL Habitat Plan to guide Land Manager's in maintaining suitable habitat conditions for SLL at this site and others.</p> <p>Nadjung Mada contains trees that are critical to SP movement through the wider landscape. SP movement through Nadjung Mada is particularly important as many of the individuals using these trees are active breeders (at Throsby East). They have been recorded using the corridor multiple times daily during the breeding season to source food for their young. Characteristics that make the trees on Nadjung Mada suitable for SP movement include their height (> 10 m), species (<i>E. melliodora</i>), crown (healthy), and age/size (mature/large). At least 40 trees within the reserve contain these characteristics – priority action is to maintain these trees, which is being achieved.</p> <p>Other activities undertaken by PCS at this site included the installation of a water trough at West Kenny, and infrastructure and biomass management. PCS participated in an onsite visit and Dhawura Ngunnawal Caring for Country Committee Roundtable with Ministers Rattenbury and Vassarotti and SLA. This was facilitated by community consultants and hosted on Country. Outcomes of these events will be considered in reserve planning and in the Kenny EDP. These events also promoted staff awareness of cultural sensitivities associated with the management of this site.</p>

7. Report on performance by outcome/commitment

Table 2 below describes the commitments from the Plan and the status of each commitment. Items reported as complete at the end of the 2022-2023 reporting period are attached to this report (**Appendix A**) for reference.

Table 2 – Gungahlin Strategic Assessment Commitments – Status

Item	Commitment	Responsibility	Comment	Timing and Date
1	Variation to the Territory Plan and amendment to the National Capital Plan for all proposed land use changes (including creation of Nature Reserves) in accordance with the Plan.	EPSDD/NCA	<p>Timing for the establishment of nature reserves is linked to relevant development activities. All nature reserves committed to in the plan have now been formally incorporated in the reserve system.</p> <p>Jacka 2 works commenced in 2022-23 financial year. The masterplan for this estate includes formalisation of the existing wetlands in the south and the future hills, ridges and buffer zones to the north.</p> <p>All works in Taylor has been completed including land release in accordance with the ILRP.</p> <p>The first land being developed in Kenny is for the new East Gungahlin High School, which is currently under construction. Preparation of an Estate Development Plan (EDP) is expected to commence in 2023-24.</p>	<p>All nature reserves and offset areas, with the exception of Kenny, were established under Territory Plan Variation 319 in November 2014.</p> <p>Nadjung Mada Nature Reserve (Kenny) was formally approved in 2021, via Territory Plan Variation 379. Please see commitment item 21 below for details.</p> <p>Other land use changes have been and will continue to be uplifted after relevant EDPs are approved.</p>
3	Provide documented guidance on the development of concept plans to ensure appropriate land use planning for areas adjacent to MNES habitat and associated buffers for all urban development including specific consideration of the estate design/layout. This is inclusive of requirements for Asset Protection Zones (APZ) between the buffer zone and any residential development.	PIT	<p>Concept plans or similar planning documents (structure plans or planning and design frameworks) may not be required for all suburbs.</p> <p>Guidance documents have been prepared for Throsby and Taylor. Due to the progress development lifecycle stage of these developments, there is limited need or scope for changes to the strategic plans and frameworks. A guidance document for Kenny is currently being prepared.</p> <p>Throsby Playing Fields (EDP approved 19 July 2022) has been assessed and includes Asset Protection Zones within the development footprint.</p>	<p>Ongoing.</p> <p>This will occur prior to lodgement of EDPs for each suburb. The guidance document for Jacka is at the final stage of preparation which will cover Stage 2 and future stages. Stage 1 EDP for Jacka was approved in 2012 before the establishment of the Plan.</p> <p>The guidance document for Kenny is in preparation and to be finalised before lodgement of the EDP for Kenny.</p>
4	Review and update Land Management Agreements (LMA) or management plans for all avoided areas of NUZ3 – Hills, Ridges and Buffers to ensure consistency with, and application of commitments of the Plan. As a part of this action, baseline condition assessment of all avoided areas including NUZ3 will be undertaken and LMAs will include conditions for compliance and enforcement.	EPSDD - PCS	<p>Negotiations for review and update of LMAs occurs where necessary between EPSDD and rural lease holders.</p> <p>The LMA for the leased area of the Kenny offset site is no longer required as the lease was withdrawn during 2020-2021 and the site transitioned to Nature Reserve. This land is now under the custodianship and management of PCS.</p> <p>The two LMAs that apply to the Kinlyside Nature Reserve are no longer required, as the leases over the nature reserve were withdrawn (effective from 1 July 2023). The land is now under the custodianship and management of PCS.</p> <p>Agistment licenses for all areas where stock is required are managed by PCS. Licences have been prepared under section 273 of the <i>Nature Conservation Act 2014</i> to enable rural lease holders to undertake various land management activities in avoided hills, ridges and buffer zones (NUZ3).</p> <p>Baseline assessment of areas has been completed in accordance with commitment items 13 and 14.</p>	Ongoing.
5	Implement cat containment policy in all urban development areas.	TCCS	<p>The GSA suburbs – Bonner, Crace, Forde, Gungahlin Town Centre east, Jacka, Moncrief, Taylor and Throsby were declared cat containment areas under the <i>Domestic Animals Act 2000</i>.</p> <p>In 2021, the Cat Plan 2021-2031 was released. The Cat Plan sets a number of strategies and actions to guide the management of cats in the ACT. Implementation of the plan and the associated strategies will be guided by the ACT Cat Plan Implementation Plan.</p>	<p>Complete for all suburbs except Kenny where development has not commenced.</p> <p>See DI2019-33</p>

Item	Commitment	Responsibility	Comment	Timing and Date
9	Develop a Reserve Management Plan for all new nature reserves in order to provide for adaptive management and condition improvement of the reserve in accordance with the objectives and commitments of the Plan.	EPSDD - PCS	<p>Offset Management Plans (OMPs) and the supporting habitat improvement plans are published on the Environmental Offsets Register:</p> <ul style="list-style-type: none"> • Kinlyside OMP 2015 • Throsby and Kenny broad acre OMP 2015 • Box Gum Woodland and Derived Native Grassland Condition Improvement Plan 2015 • Golden Sun Moth Habitat Improvement Plan 2015 • Striped Legless Lizard Habitat Improvement Plan 2015 • Superb Parrot Habitat Improvement Plan 2015 <p>Note: Reserve management plans for existing nature reserves are expected to evolve over time and OMP reviews will be conducted when required.</p> <p>The OMP for the newest reserve, Nadjung Mada is in production.</p>	<p>Kinlyside and Throsby OMPs: Completed. Review of these OMPs may occur.</p> <p>Nadjung Mada Nature Reserve: The initial OMP is currently being drafted, with a draft expected to be submitted to the Commonwealth in the second half of the 2023 calendar year.</p>
11a	Review and approve (subject to compliance with the Plan) Construction Environment Management Plans (CEMP) submitted for all new construction projects within the area subject to the Plan.	PIT	<p>CEMPs are required to be submitted and approved prior to the commencement of construction in development and conservation areas in the Plan.</p> <p>In 2022-2023, two CEMPs for development in GSA, were submitted and endorsed:</p> <ul style="list-style-type: none"> • Well Station Drive upgrades – East Gungahlin High School – 2022 • Jacka 2 Stage 1B – 2023. 	Ongoing.
12	Coordinate with TaMS – Asset Acceptance to ensure all obligations of contractors with respect to management of MNES in accordance with the Plan have been implemented prior to hand-over of assets to the Territory.	PIT	<p>Prior to practical completion of each development contract. TCCS (formerly TaMS) will engage with the appropriate persons within their Directorate to ensure these requirements have been met.</p> <p>All relevant DAs, including EDPs in the GSA, are referred to the Impact Assessment team to ensure compliance with the Plan. Conditions are placed in DA and EDP approvals to ensure obligations with respect to management of MNES during construction are implemented.</p>	Ongoing.
14	Ongoing collection of key ecological information for reporting requirements.	EPSDD - monitoring and PCS	<p>Golden Sun Moth (GSM)</p> <p>GSM habitat condition monitoring was undertaken at all offset sites in 2018, 2019, 2020, 2021 and 2022 as part of annual herbage mass assessments.</p> <p>GSM population monitoring was undertaken in 2018, 2019, 2020 and 2022 flying seasons (October-December) at Kinlyside, Throsby North and Throsby East, and in 2021 at the former two sites only. 2020 was the last year of 3-year baseline data collection for all monitoring sites. Future results will be compared to the baseline to determine any ecological changes brought on by management actions or variability in climatic conditions.</p> <p>Kinlyside and Throsby North have been monitored annually for GSM population from 2015-22, while Throsby East was monitored in 2016, 2018, 2019, 2020 and 2022. Preliminary results show that GSM at Throsby North has increased in distribution and abundance by 20% per year from 2015 to 2019, with the highest numbers recorded in 2019. There is no clear trend at Kinlyside over the entire period, with fluctuations in numbers recorded each year since 2015. Kinlyside is the only site that showed a decrease from 2018 to 2019. Over the first 2 years of GSM population monitoring at Throsby East, an increase in numbers was observed.</p> <p>All offset sites recorded a drop in GSM population and distribution in 2020 and further drops to almost no GSM were recorded in 2021 and 2022 surveys, likely due to the La Niña climate patterns. Cool, wet conditions were unsuitable for the emergence of adult moths. This prolonged decline is of potential concern, however poor survey conditions mean this cannot be confirmed and further investigation is required. Due to consecutive years of poor survey conditions and resulting questions about population status, comprehensive monitoring of all offset sites is planned for the 2023 season.</p> <p>Although formal surveys of GSM are not a core requirement at Taylor and Horse Park North, they were opportunistically conducted for the first time in October 2020. Small populations of GSM were confirmed in small areas of both offset areas. Further opportunistic surveys were undertaken in 2021 and at Horse Park North only in 2022, and both sites will be surveyed in the 2023-24 flying season if capacity allows.</p> <p>Comprehensive results are included in the Golden Sun Moth Monitoring and Mapping Reports published on the ACT Environmental Offsets Website:</p> <ul style="list-style-type: none"> • Environmental Offsets Ecological Monitoring Program Report 2018-19 	<p>Ongoing.</p> <p>GSM population monitoring occurred during flying seasons in 2018-19, 2019-20, 2020-21 and 2022-23 across all GSM offset sites.</p> <p>Future GSM population monitoring is scheduled to be undertaken during the flying seasons of 2023 and 2026. Pending resourcing and availability, long-term monitoring sites (Kinlyside and Throsby North) may also be surveyed for GSM populations between these years.</p> <p>GSM habitat condition monitoring for all offset sites was completed annually from 2018 to 2022.</p> <p>Future GSM habitat condition monitoring is scheduled to be undertaken during the flying seasons of 2023 and 2026. Habitat condition monitoring will be undertaken during annual herbage mass surveys of these sites.</p>

Item	Commitment	Responsibility	Comment	Timing and Date
			<ul style="list-style-type: none"> Environmental Offsets Ecological Monitoring Program Report 2019-20 Throsby North GSM Population Monitoring and Habitat Mapping 2017 Kinlyside GSM Population Monitoring and Habitat Mapping 2017 Bonner, Throsby and Kinlyside - GSM Population Monitoring and Habitat Mapping 2016 Bonner, Throsby and Kinlyside - GSM Population and Habitat Monitoring Program Report 2015 Throsby East GSM Habitat Mapping 2017 (1.5 MB) 	
			<p>Striped Legless Lizard (SLL)</p> <p>SLL habitat condition monitoring was undertaken at Kenny Broadacre and Nadjung Mada in 2018, 2019, 2020, 2021 and 2022 as part of annual herbage mass assessments. SLL population monitoring was also undertaken in these years.</p> <p>The population of SLL recorded at Kenny Broadacre appeared to decline from 2018 to 2019, with no individuals recorded in 2019. During this time there was reduced grass height due to drought. Increased suitable habitat from rainfall (i.e., increased grass biomass) and altered grazing regimes develop an increase in SLL in 2020 with consistent numbers in 2021 and 2022.</p> <p>The population of SLL at Nadjung Mada is currently extremely low. Surveys from 2018 to 2020 recorded a significant decline in the population compared to previous surveys in 2012 and 2015, with the first single individual recorded in 2020. A small increase was recorded in 2021 with 4 records, and stable numbers in 2022 (3 SLL). After three consecutive wet years and an increase in biomass in conjunction with targeted management activities, the habitat for SLL at Nadjung Mada has improved and it is expected that numbers will remain stable during the 2023 spring monitoring season.</p> <p>Results are included in the Environmental Offsets Ecological Monitoring Program Reports published on the ACT Environmental Offsets Website:</p> <ul style="list-style-type: none"> Environmental Offsets Ecological Monitoring Program Report 2018-19 Environmental Offsets Ecological Monitoring Program Report 2019-20 <p>A translocation plan has been produced to guide salvage translocations across the Kenny/Nadjung Mada landscape. Individuals from bordering development sites are being translocated into a purpose-built enclosure within the reserve, as required.</p> <p>SLL are monitored at grassland areas in Kenny Broadacre and Nadjung Mada and have been surveyed annually as part of the OMP since 2018. The abundance of SLL at each of these sites is low, particularly in comparison to other sites in the Gungahlin region that maintain large populations.</p> <p>In Kenny Broadacre, a low population abundance has been maintained over the last 5 years of surveys (one to three individuals recorded).</p>	<p>Ongoing.</p> <p>SLL habitat condition and population monitoring occurred annually from 2018 to 2022.</p> <p>Future SLL population surveys will be undertaken annually for Nadjung Mada Nature Reserve, and in 2023 and 2028 for Kenny Broadacre (with potential to surveys in years in between, should capacity allow).</p>
			<p>Superb Parrot (SP)</p> <p>SP breeding was monitored at the Throsby East offset sites in the spring and summer of 2022. Seven (7) SP nesting attempts were located on the Throsby East offset site in 2022. All nests failed to produce young. This is an unprecedented event in the SP breeding history within the GSA and most likely due to La Niña conditions (see Table 1 for more information).</p> <p>SP Monitoring Reports are published on the ACT Environmental Offsets Website. Further reports will be published in the future:</p> <ul style="list-style-type: none"> Breeding ecology of the Superb Parrot (Polytelis swainsonii) in northern Canberra: Nest monitoring report 2016 Breeding ecology of the Superb Parrot (Polytelis swainsonii) in northern Canberra: Nest monitoring report 2015 <p>Annual monitoring reports from 2017-2022 are in draft and expected to be published online on the ACT Environmental Offsets Register in 2024.</p>	<p>Ongoing.</p> <p>SP monitoring is completed from September to February annually (2015 – 2022). SP monitoring will continue in Spring 2023.</p>

Item	Commitment	Responsibility	Comment	Timing and Date
			<p>Box Gum Woodland (BGW)</p> <p>BGW condition, including woodland structural attributes, floristics and understorey structure were monitored across the GSA offset sites (Horse Park North, Nadjung Mada, Kenny Broadacre, Kinlyside, Taylor, Throsby East and Throsby North) during 2018-19, 2019-20 and 2020-21.</p> <p>2020-21 was the last year of baseline data collection. Floristics and understorey structure surveys were also undertaken in 2021-22 and at a selection of sites in the 2022-23 season. Woodland structural attributes were surveyed at Nadjung Mada in 2023. Future results will be compared to the baseline to determine any ecological changes brought on by management actions or variability in climatic conditions.</p> <p>Preliminary results show that in 2018 and 2019, the native plant species richness fell below the benchmark of 35 (on average) and Floristic Value Score (FVS) was below benchmark of 37 for all sites. However, following favourable conditions in 2020, 2021 and 2022 areas of BGW in Kinlyside, Taylor, Throsby North and Horse Park North were recorded above benchmarks for floristic diversity in 2022.</p> <p>In both 2018 and 2019, BGW mapped areas met the benchmark of above 50% native ground cover, except for Throsby East, which was 45% native ground cover in 2019. However, in 2020, 2021 and 2022 some BGW areas fell below the benchmark of 50% native ground cover – most likely due to the wet seasonal conditions favouring exotic species, high grass biomass and low bare ground smothering out natives.</p> <p>All GSA offset sites were below benchmark for coarse woody debris, except for Kenny Broadacre, Throsby East and Taylor in 2019-20. All GSA offset sites, except for Kenny Broadacre, were also below the benchmark for the number of mature trees. Kenny Broadacre recorded the highest number of mature trees of all woodland offset sites and was well above benchmark. Surveys of woodland structure attributes at Nadjung Mada in early 2023 showed an increase in health of large trees and canopy cover and overall maturing of trees with increased numbers of small and medium trees. Woodland attribute surveys are committed to be undertaken again in 2025 within the GSA sites.</p> <p>Across all five survey periods, weeds were deemed to be a threat at all offset sites. However, the density of weeds has fluctuated with significant effort in the on-ground management response and seasonal conditions. The most recent results of BGW areas (spring 2022) recorded high density of Serrated Tussock and St John’s Wort at Horse Park North, Kinlyside and Taylor offset sites. St John’s wort is at low levels but widespread across the other GSA offset sites.</p> <p>In terms of woodland condition overall, preliminary results show that across the GSA sites, the best quality sites are Horse Park North, Kinlyside, Taylor and the northern section of Throsby North. Comprehensive results before 2018-19 and 2019-20 are published in the two Environmental Offsets Ecological Monitoring Program, Reports available on the Offsets Website and Register.</p> <p>Box-Gum Woodland Monitoring and Mapping Reports are published on the ACT Environmental Offsets Register and Environmental Offsets Website:</p> <ul style="list-style-type: none"> • ACT Box-Gum Woodland Offset Monitoring 2016 • Woodland Quality and Extent Mapping 2017 • Grassland Quality and Extent Mapping 2017. 	<p>Ongoing.</p> <p>Floristic surveys and herbage mass analysis were undertaken in 2018-19, 2019-20, 2020-21 and 2021-22.</p> <p>In 2022-23 herbage mass surveys were undertaken at all sites and floristics surveys were undertaken in Kinlyside, Horse Park North, and Throsby East and Throsby North.</p> <p>Woodland structural attributes for BGW condition surveys were undertaken across all GSA offset sites in 2018-19, 2019-20 and 2020-21 and at Nadjung Mada only in 2022-23.</p> <p>Vegetation condition in the form of herbage mass and weed density surveys will continue annually across all GSA sites.</p> <p>BGW condition (structural attributes + floristics) is scheduled to be surveyed again in 2025, with floristics to be undertaken in other years (between 2022-25) if resources permit.</p>
			<p>Pink-tailed Worm-lizard (PTWL)</p> <p>The PTWL is not a MNES with commitment targets in the Plan. However, data is being collected on the habitat and presence of this species to inform land management planning and operations.</p> <p>The extent of potential low, moderate, and high quality PTWL habitat was mapped within Kinlyside in November 2016, with 25 ha of potential moderate and high quality PTWL habitat described. Population monitoring will commence in 2024, following the newly developed low impact monitoring method (Milner in prep). Results of this study may be published on the EPSDD website.</p> <p>Mapping of potential PTWL habitat occurred at Horse Park North and Taylor avoidance areas in the 2022-2023 reporting period.</p>	<p>Ongoing.</p> <p>Future mapping of PTWL habitat is planned to be undertaken in 2026.</p>

Item	Commitment	Responsibility	Comment	Timing and Date
			<p>Woodland birds</p> <p>Woodland bird monitoring is not a core commitment under the GSA. However, woodland birds are monitored by PCS at Horse Park North, Taylor, Throsby North, Throsby East and Nadjung Mada. Woodland bird monitoring is undertaken by the Canberra Ornithologist Group at Kinlyside using the same methodology. This monitoring was consistently undertaken seasonally, including in 2018, 2019, 2020, Autumn of 2021 (Horse Park North, Kenny, and Taylor), and was completed in winter of 2022 (Throsby North and Throsby East).</p> <p>Preliminary results of these surveys indicate that Horse Park North and Taylor host the highest number of native bird species, with the sites recording over 52 and 39 native bird species respectively. The density of the native pest species, Noisy Miner, is above threshold at Nadjung Mada, Throsby East and Throsby North.</p> <p>Future surveys of woodland birds may be undertaken on a 3 or 5 yearly basis, pending resource availability.</p>	<p>Ongoing.</p> <p>Woodland bird monitoring was completed in Winter of 2022. Future surveys may be undertaken on a 3-5 yearly basis, pending resources.</p>
15	<p>Any action that results in a breach of commitments of the Plan and adversely affects MNES values will be investigated and reported to DoE with identified recommendations for rectification, remediation or additional compensation.</p> <p>Remedial actions or additional compensation will be undertaken for controllable or avoidable actions which lead to a decline in MNES values with respect to the stated outcomes of the Plan.</p>	PIT	<p>In response to the 2017 Audit Report (commitment 19) and internal review (commitment 17), a new procedure to report potential breaches of the GSA was implemented. In 2019-20 the procedure was updated to reflect lessons learnt and to ensure practical outcomes. It sets responsibilities and timeframes for reporting, investigations and communication with relevant GSA stakeholders and the Commonwealth.</p> <p>As reported previously, monitoring in recent years (during the drought) at Kinlyside and Nadjung Mada indicated potential long-term decline of some MNES, including BGW, GSM habitat and SLL, resulting in a potential breach of the Plan. In August 2020, the ACT Government reported this to the Commonwealth to advise the factors contributing to potential long-term decline and the Territory's management strategy to address this issue. The Commonwealth supported the Territory's proposed management strategy.</p> <p>During the reporting period a potential breach was reported in relation to encroachment into the Nadjung Mada Nature Reserve. An investigation is being undertaken in accordance with the GSA breach procedure and, as this matter is still under investigation, the outcome will be included in the next annual report.</p>	<p>Ongoing.</p> <p>Breaches will be investigated and GSA stakeholders (Department of Climate Change, Energy, the Environment and Water (DCCEEW), PIT, EPSDD) will be notified according to the agreed breach procedure.</p> <p>Monitoring of Kenny and Kinlyside will continue with ongoing site management and planning activities expected to help reduce further decline in MNES at these sites.</p> <p>In 2023 DCCEEW was informed about a potential breach relating to the Nadjung Mada Nature Reserve. This matter is ongoing and will be reported in the 2023-2024 annual report.</p>
16	<p>Prepare and submit Annual Reports (n=20). Highlighting the implementation of the actions and relevant conservation outcomes for MNES. All reports, in addition to any research related to the Plan will be published on the internet in a central location.</p>	PIT	<p>The 2021-22 Annual Report was submitted to the Commonwealth in November 2022. This report represents the 2022-23 Annual Report.</p> <p>All Annual Reports are published on the Environmental Offsets Register:</p> <ul style="list-style-type: none"> • Gungahlin Strategic Assessment Annual Report 2021-22 • Gungahlin Strategic Assessment Annual Report 2020-21 • Gungahlin Strategic Assessment Annual Report 2019-20 • Gungahlin Strategic Assessment Annual Report 2018-19 • Gungahlin Strategic Assessment Annual Report 2017-18 • Gungahlin Strategic Assessment Annual Report 2016-17 • Gungahlin Strategic Assessment Annual Report 2015-16 • Gungahlin Strategic Assessment Annual Report 2014-15 • Gungahlin Strategic Assessment Annual Report 2013-14 	<p>Ongoing.</p> <p>Annual reports are due within 2 months of the end of the financial year (31 August) each year until 2033. An extension was granted for the 2022-2023 annual report until 15 September 2023.</p>
17	<p>Prepare and submit Plan Review Report (n=5). The final Plan Review Report will include a summarised synthesis of all knowledge gained over the life of the Plan in order that it represent a complete description of actions taken under the Plan, requirements for ongoing management and opportunities for future enhancement beyond the life of the Plan.</p>	PIT	<p>Plan Review Reports are scheduled every fourth year from endorsement of the Plan (within 6 months of the end of financial year) until 30 August 2033.</p> <p>The Second Plan Review Report was prepared in November 2022. Next Plan Review Report will be due in 2026. Plan Review Reports are published on the Environmental Offsets Register:</p> <ul style="list-style-type: none"> • Gungahlin Strategic Assessment Plan Review Report 2022 • Gungahlin Strategic Assessment Plan Review Report 2018 	<p>Ongoing.</p> <p>The next Plan Review Report due in August 2026.</p>

Item	Commitment	Responsibility	Comment	Timing and Date
18	Engage a third party (outside of the PIT membership or working group) to undertake an annual audit of financial management under the Plan. Findings of the audit are to be included in the annual report.	PIT	Financial audits are undertaken by EPSDD Strategic Finance who consult with PCS representatives. Findings of the 2022-23 audit are displayed in Table 4 below.	Ongoing. These details are included in Annual Reports, due 31 August each year until 2033.
19	Engage a third party to undertake an Independent Audit of the Plan's implementation (n=4).	PIT	The Independent Audit is a recurring commitment item due every five years. The first Independent Audit of the GSA was prepared by the Office of the Commissioner for Sustainability and the Environment in November 2017. The second Independent Audit of the GSA prepared in July 2023 by NGH Pty Ltd. The next Audit is due in June 2028.	Ongoing. The next audit is due June 2028.
26	Improvement in the under-storey diversity of 104 hectares of box gum woodlands that presently do not meet the definition of the listed community. Areas subject to this action will include those that are presently in nature reserves in addition to areas that will become nature reserve as a result of implementing the Plan.	EPSDD in consultation with the PIT - PCS	<p>This is described in the relevant Habitat Improvement Plan (HIP) and is required to be completed within 20 years of endorsement of the Plan.</p> <p>Updated BGW mapping undertaken across GSA offset sites in 2017 continues to inform MNES improvement planning and baseline for future activities. A restoration zone map and spatial tool with site specific attributes has been delivered by the offsets planning and monitoring teams. These tools have assisted in informing targeted operational planning and implementation to maintain or improve BGW understorey towards meeting the EPBC Act definition of the listed endangered ecological community. This will help achieve restoration in BGW understorey diversity by more accurately reflecting the baseline from which habitat improvement and restoration plans can be established, implemented, and evaluated.</p> <p>Additionally, landscape improvement plans have been developed and are being implemented for GSA avoidance areas (Jacka, Taylor and Horse Park North). Improvements to understorey condition arising from management actions under the landscape improvement plans will be tracked in these sites.</p> <p>Activities to improve understorey diversity in 2022-23 included:</p> <ul style="list-style-type: none"> • Maintenance of heavy-duty tree guards around individual naturally regenerating eucalypts and temporary fences around restoration areas to protect from grazing pressure (guided by identified restoration zone map). • Managing macropod grazing pressure annually in line with the ACT Herbage Mass Guidelines and Eastern Grey Kangaroo Draft Controlled Native Species Management Plan 2017. • Previous intensive monitoring and eradication of rabbits resulting in no rabbit detections in 2021-22 or 2022-23 in Throsby North, Throsby East and Kenny Broadacre offset sites. • Biannual monitoring of feral animal and kangaroo populations using camera arrays for feral at Jacka, Taylor and Horse Park North offset avoidance areas. • Small mammal surveys in the North Gungahlin woodlands, with initial data indicating presence of Common Dunnarts (<i>Sminthopsis murina</i>). • Continuation of the invasive plant operational program, including the treatment of several weed species such as Serrated Tussock, African Lovegrass, St John's Wort, broadleaf weeds and thistles; • Slashing and spraying Phalaris at strategic locations to encourage eucalypt, native grass, and forb regeneration. • Targeted native seed collection (grasses and forbs), preparation and storage for use in future restoration projects. • Biomass management guided by the ACT Herbage Mass Guidelines and spatial data sets, including ecological burns followed by seeding, strategic mowing, slashing or grazing to create habitat heterogeneity. • Targeted restoration in Spring 2022 and Autumn 2023 to reintroduce native grass and forb species to the understorey of BGW (improving floristic diversity) and in drainage lines (to improve vegetation structure. These areas were previously grazed out by set stocking regimes. • Preparation of Restoration Plans for Throsby sites and Nadjung Mada Nature Reserve. Strategies include further ecological burns when conditions are appropriate, native grass harvesting, and planting out of forb nodes. Completion of a 34ha burn in Throsby North to reduce biomass. 	Ongoing. BGW extent is due to be re-mapped across the GSA in 2026-27. Use of updated BGW mapping to inform improvement activities was undertaken in 2022-23 and will continue into 2023-24.

Item	Commitment	Responsibility	Comment	Timing and Date
28	<p>Fire hazard management strategies that include specific considerations for:</p> <ul style="list-style-type: none"> • box gum woodland • golden sun moth • striped legless lizard • superb parrot 	EPSDD - PCS	<p>These are being developed for each reserve as ecological considerations are provided in the Strategic Bushfire Management Plan (ACT Government).</p> <p>Specific bushfire management and mitigation measures are also outlined in the Regional Fire Management Plan which was revised in consideration of the impacts of the Orroral Valley Bushfire. The 2019-2028 Regional Fire Management Plan was finalised and released in November 2021. This included a review of the Fire Management Zones in the Taylor 3 development approval process, which is determined by ACT Emergency Services Agency (ESA).</p> <p>The ACT Bushfire Management Standards have been updated with more stringent requirements for Asset Protection Zones to be located within development areas and to consider the environmental impacts of any zones. This will support better outcomes for any land release in or adjacent to the Gungahlin region which weren't included as suburbs in the GSA.</p> <p>Annual bushfire work programs are outlined in the yearly-prepared Bushfire Operations Plans (BOPs) and these are published online along with the Regional Fire Management Plan and Fire Management Zones on ACTMapi. Annual Bushfire Operation Plans can be viewed on this website: Fire Management Policies and Plans - Environment, Planning and Sustainable Development Directorate - Environment (act.gov.au).</p> <p>Planned fire (hazard reduction and ecological burns) are reviewed by Office of Nature Conservation to include the ecological guidelines for these values. The following link outlines Ecological guidelines for fire, fuel and access management operations (act.gov.au). This document includes the table from the ACT Herbage Mass Guidelines which has specific advice for fire slashing and grazing for these communities and species. These guidelines are utilised when assessing and preparing burn plans for hazard reduction.</p> <p>For some sites, the conditions were too wet to undertake ecological burns and other competing agency priorities took precedence, so slashing and grazing were adopted.</p>	<p>Ongoing.</p> <p>The Fire Management Strategy for Taylor 3 is the most recent submitted.</p>
31	<p>Commence planning for implementation of focused research on superb parrot habitat requirements: Research focusing on nest site selection, nest site fidelity, fecundity, population dynamics and methods of reducing or eliminating nest hollow competition from aggressive native species or exotic pests such as common myna and European honeybee.</p> <p>Assisted natural regeneration to facilitate future hollow formation will be undertaken in areas likely to be suitable as future nesting sites.</p> <p>Removal of stock leading to a reduction in localised compaction and concentration of nutrients, improving long term tree survival.</p>	EPSDD - PCS	<p>SP numbers, breeding behaviour, nesting attempts and productivity are monitored at Throsby East and central Molonglo Valley. Data have been analysed to compare nest survival and reproductive success across these two colonies. Results show that SP nest success is consistently high, but the condition of young can vary significantly from year to year with weather conditions. Findings are published in the peer-reviewed journal <i>Emu</i>: "High nest survival, but variable reproductive output in the Superb Parrot".</p> <p>High nesting success displayed by SPs suggests that nest competition from other hollow-using fauna is not a threat that requires management intervention at this time. Ground-based bird surveys have been undertaken at the breeding area since 2017, and results will be analysed to assess change in competitor abundance. An Honours project (with the ANU) will commence in September 2023 to examine, in greater detail, the dynamics of competitive exclusion at nest sites suitable for the SP. Competitor abundances and SP nesting success will continue to be monitored annually at Throsby East.</p> <p>Detailed tree hollow data have been collected at Throsby East offset site and central Molonglo Valley, and analysed to characterise SP nest preferences, and assess local-scale nest hollow availability. Results indicate availability of suitable SP nest hollows is very low. Findings are published in the peer-reviewed journal <i>Forest Ecology and Management</i>: "Suitable nesting sites for specialized cavity dependent wildlife are rare in woodlands". Images from camera traps located at active SP nests are collected and a subset have been analysed using the online citizen science platform 'Digivol'. That work provided evidence of egg destruction by Starlings, and predation of chicks by Brown Goshawk and Kookaburra. We would like to develop AI techniques to collect further data from nest cameras if funding becomes available.</p> <p>Species Distribution Models have been built for the SP based on research results (monitoring and tracking data) and these models will be used for strategic planning of habitat improvement, including assisted natural regeneration at future potential nesting sites, for the species. We aim to present our results in a peer-reviewed paper (in preparation).</p> <p>Genetic analysis of the ACT SP population has been undertaken. Results show that SP are strictly monogamous, that the number of individuals contributing to the population is low, and recruitment of young into the breeding population is absent. This is an important field for further research (beyond GSA resourcing). Findings are published in the peer-reviewed journal <i>Animal Conservation</i>: "Reproductive skew in a wild threatened bird population".</p> <p>Stock grazing is being managed to prevent compaction and concentration of nutrients under SP nesting trees on Throsby East Offset Area.</p>	<p>2014-15: Planning / Underway 2015-21</p> <p>2021: Core research completed</p> <p>2022: New research desirable</p> <p>Core research associated with this commitment is complete, however breeding collapse observed in 2022 warrants new research into competitor dynamics. This work (ANU Honours project) will commence in Sep 2023.</p> <p>Three scientific papers have been published, and two more are in preparation, based on research associated with this commitment.</p> <p>An Offsets Research Evaluation Report will be drafted by 2024.</p>

Item	Commitment	Responsibility	Comment	Timing and Date
33	Undertake control programs of ruderal species.	EPSDD - PCS	<p>Programs aimed at the control of pest fauna species, for the benefit of SPs, is not deemed appropriate, ethical, or required at this time. All SP nesting events within the GSA have been closely monitored every year since offset establishment, including prior to development (2015).</p> <p>SPs have a high rate of annual nest survival within the GSA (>80%). Of 86 nesting attempts monitored from 2015-2022, 18 nest failures have been recorded. Only one nest failure (1% of total) was attributable to competition from the 'pest' or 'ruderal' species named in the GSA Project Assessment Report (cats, european honeybees, common myna, common starling). Nest competition and failure impacting SPs within the GSA is disproportionately driven by native species.</p> <p>No cats have been detected near the nesting colony. Only one suitable SP nest hollow has been occupied by European honeybees, which occurred after the breeding season and did not impact a successful SP nesting outcome. Common myna and common starling are abundant within the GSA and across Canberra, however our monitoring data reveal that competition from these introduced bird species has not caused a decline in SP nesting attempts or successes over the last eight years.</p> <p>It is possible, and arguably likely, that hollow competitor abundances will increase within GSA sites as avian communities establish in the neighbouring suburb. SP nesting success will continue to be monitored to determine whether ruderal species impose a significant threat to their reproductive output. Please refer to commitment item 31 for further details.</p> <p>Additionally, plantings near suburban development to create more complex habitats for native bird species has occurred at some locations (Taylor and Horse Park North). Shrub plantings are planned in 2023-24 to establish mid storey structure ahead of the development of Kenny. Species selection includes feed plants for SP.</p>	Ongoing.
34	Undertake salvage and relocation of structural habitat elements such as rocks and logs.	Contractors	<p>Woody debris placement in BGW and tree snag relocation was completed in past years. Additional woody debris for Taylor was scheduled during the 2020-21 financial year, however the project was interrupted by rainfall, and this delay has continued. The project will continue pending suitable site conditions.</p> <p>Dam enhancement has been a focus for restoration partly due to retained soil moisture at some sites. Rocks and Coarse Woody Debris (CWD) have been placed in and at four dams to improve habitat, particularly for frogs. Additionally, some rock placement to address head cuts in erosion gullies, which also provides habitat, has occurred in Kinlyside this year. Other dam works, thinning and coarse woody debris have been impacted by saturated soils and COVID workplace interruptions.</p> <p>Woody debris is monitored in woodland plots and will be reported in the Environmental Offsets Monitoring Report which will be published on the ACT Offsets Register.</p>	Ongoing.
36	Undertake all bushfire management activities in line with ACT Government's Ecological Guidelines for Fuel and Fire Management Operations.	EPSDD - PCS	<p>Perimeter and fire trail slashing is undertaken on an annual basis as required. Herbage mass is also managed in some locations using grazing. Plantings are maintained as required. In 2022-23, additional slashing occurred in areas where the ground was dry enough to allow this to occur.</p> <p>Hazard reduction burns were undertaken in the Throsby North area (Mulligans Flat/ Goorooyaroo) in a trial to control lerp impacts on E.blakelyi to reduce thatch and enhance native forbs (April 2023, 35.96ha), ecological guidelines were applied in this case. Access track maintenance works were undertaken in Percival Hill, Grazing occurred north of Taylor and Jacka along with at Harcourt Hill, Percival Hill, Gungaderra, Mullungarri, Crace Grasslands, and Kenny. Physical removal of elevated fuels was undertaken in Mulligans Flat Nature Reserve adjacent Amy Ackman St in Forde.</p> <p>In the Mulligan offset sites (Throsby North, Throsby East, Kenny Broadacre), Bushfire Operational Plan roadworks and repairs were completed in 2021. Slashing of roadsides and around assets occurred.</p> <p>Planning and scoping for design has occurred for improvements to Old Well Station Road at Nadjung Mada. Procurement and construction will occur in 2023-24.</p> <p>Improvements to Kinlyside main trail were undertaken to enhance drainage. Further review and works will be completed in 2023-24, following the lease withdrawal at the Nature Reserve.</p> <p>The design for the western section of Taylor fire trail was completed. Construction will occur in 2023-24. Delivery is in partnership with SLA.</p> <p>Some identified ecological and hazard reduction burns did not go ahead due to wet weather conditions and interruptions to operations during the lease withdrawal negotiations at Kinlyside.</p> <p>Planning is underway for the upgrade and repair of two fire trails in Throsby North and Throsby East offsets.</p>	Ongoing.

Item	Commitment	Responsibility	Comment	Timing and Date
37	The formula for funding set out in Table 5.3 over the 20- year life of the Plan will be implemented.	PIT Strategic Finance PCS	<p>The formula for funding was implemented upon endorsement of the Plan and approval of the class of actions permitting urban development of Gungahlin.</p> <p>The formula for funding has been implemented as appropriate however, it was identified in the plan that funding requirements may vary depending on the timing of land releases (connected to establishment of offset reserves), and on changing future costs of land management practices. These variations have occurred in some instances. Funding was given as a best estimate in 2013 and has been modified where necessary. Variations have included:</p> <ul style="list-style-type: none"> • Kinlyside offset requiring increased funding as compared to the plan due to ACT Government recognition of their responsibility to assist lease holders with land management and funding to deliver offset commitments. This will be revised as necessary once lease withdrawal across the Nature Reserve is finalised. • Increased cost of delivering some land management activities (particularly with increased interest rates, and costs of materials and contractors post-pandemic). • Decreased costs of delivering land management activities or research projects where certain activities no longer need to be undertaken. 	Ongoing.
38	Review the funding arrangements to ensure the Plan commitments are being met in the event of total expenditure variations of more than 5 per cent over the 20-year period (+/- \$1.325million).	PIT Strategic Finance PCS	<p>An annual variation (from normal spending) of more than 5% was recorded in the 2021-22 annual budget for funding of the GSA offset areas. The initial budget allocation for 2021-22 of \$933,250 was reduced to \$818,250 equating to a 12.3% variation. An annual variation of more than 5% was recorded in the 2022-23 annual budget. The initial budget allocation for 2022-23 of \$863,110 was reduced to \$646,831, equating to a 25.1% variation.</p> <p>The variation in 2021-22 occurred due to reductions and reallocations in funding across the EPSDD as a direct response to COVID-19 restrictions and budget impacts. This reduction resulted in some planned management actions being pulled back for this financial year, however all commitment-related offset management activities continued. Additionally, all staffing costs were maintained.</p> <p>The variation in 2022-23 occurred due to reallocations in funding across the EPSDD due to ongoing budget impacts from COVID-19. All staffing costs were maintained, and commitment-related offset management activities continued for 2022-23, with the Division taking on expenditure in excess of allocated budgets as a cost pressure. Actions are being taken to:</p> <ul style="list-style-type: none"> • Communicate the ongoing need for full allocation of offsets funding to support delivery of commitments, and • Assess the impact of these reductions in meeting commitments of the Plan. <p>Funding for the 2023-24 financial year has not been confirmed at the time of writing, and any variations will be reported in 2023-24 annual report.</p> <p>It is important to note that variation under commitment 38 apply to ongoing allocations from approved ACT Government budgets, rather than a variation from the original estimates in the Plan. Variations from the Plan are discussed in Commitment 37, in the financial reporting section below, and Table 4.</p>	Ongoing. A review of the funding arrangements will be conducted by PCS in 2023.

8. Plan Review Report

The Plan requires a Plan Review Report to be prepared every four years from endorsement of the Plan. The [first Plan Review Report](#) was completed in September 2018. There was limited information available to comment on all commitments when the first report was prepared.

The [second report for the period of June 2018 – June 2022](#), discusses the GSA progress over the past 4 years and recognises the delivery of commitments to date. The 2022 report provides findings on actions undertaken, improvements to MNES, legislation and policy changes, and knowledge gained from June 2018 to June 2022. The report also considers issues and challenges that have arisen and opportunities for improvements in delivery of the Plan. The next Plan Review Report is due in August 2026.

The report provides a number of recommendations for improving the delivery of commitments in the future, and the ACT Government will continue to work with the Commonwealth Government to deliver these recommendations. Some commitments are on-going, and their progress will continue to be captured in future Plan Review Reports.

Table 3 below summarises the recommendations proposed for the next four years, progress at the time of the second Plan Review Report (i.e. 2022 Comment) and current status.

Table 3 – Recommendation of the Gungahlin Strategic Assessment Plan Review report – Status

2022-2026 Recommendation	2022 Comment	Current Status
Coordination		
Regular meetings with stakeholders should be established (e.g. 3-monthly whole of GSA stakeholder catchups).	In progress with the formal establishment of the GSA Working Group. However, further work is needed as the Terms of Reference (ToR) for the group are unclear, and meetings are not as frequent as they need to be.	Working group ToR to be reviewed by June 2024 and recurring meetings to be scheduled.
Pursue an ongoing offsets policy position to complete required policy review and associated policy development identified in the Review Report.	In progress with a staff member recruited on a temporary contract to focus on the offsets policy review and offsets register. However, this position is not ongoing which risks completion of all required policy review and policy development as the GSA Working Group do not have capacity to do policy development.	ACT Environmental Offsets Policy Review, prepared by Rooftop Social and Institute for Sustainable Futures, UTS in collaboration with Environment, Heritage and Water (EHW) concluded in August 2023. The report will be published.
There are a number of compliance teams within ACT Government that have specific powers under different legislation (e.g. NC Act, Environment Protection Act and PD Act). All teams are currently collaborating when investigating compliance issues.	Compliance monitoring and enforcement is a gap that still requires further development.	Discussions have been occurring between these areas. This is ongoing.

2022-2026 Recommendation	2022 Comment	Current Status
A clearer process, and sufficient resourcing, is required to record and transfer information across stakeholders involved in GSA delivery. This process should be communicated to all stakeholders at the commencement of each financial year (post-annual reporting), and when there is turnover in key stakeholders.		Ongoing.
Interpretation and delivery of commitments		
Further discussions to be undertaken about developing a wiki or glossary detailing the interpretation of each commitment which could help to reduce confusion across the various stakeholders involved in implementing the GSA.	This recommendation was noted in the 2019 Umwelt brief sent to the Commonwealth. This should be raised at GSA Working Group (offsets working group), to ensure a responsible party is agreed and the work is progressed.	Ongoing.
A service delivery agreement should be prepared which clearly sets out the intent and actions that need to be delivered for each commitment. Service delivery agreements could be developed by EPSDD for future strategic assessments and would be subject to approval from the Commonwealth.	Greater guidance on interpretation of each commitment is essential due to the long lifetime of the GSA and subsequent changes to staffing and team structures that inevitably occurs. Service delivery agreements are an ongoing matter.	Ongoing.
Monitoring and mapping		
Guidance from the Commonwealth is required on the implications of the 2018 mapping in achieving the GSA Plan commitments. This guidance will facilitate restoration planning decisions.	Desktop mapping exercises were undertaken in preparing the Plan. Ground-truthed mapping was then undertaken by Ecological (2011), and again by Capital Ecology (2018). The 2018 mapping was inconsistent with the earlier mapping, and the refined method employed by Capital Ecology has now been used across GSA and other offset sites, and this will be used to re-map GSA sites in 2026-2027.	Re-mapping of GSA sites is set for 10 year intervals, and Capital Ecology's refined method of Plant Community Type (PCT) mapping will be utilised for consistency. The next round of PCT mapping is due in 2026-27.
There has been a movement towards spatial planning & delivery of monitoring/management data via spatial platforms. Consideration should be given to providing flexible means of delivering OMPs under Commonwealth commitments, e.g., via spatial platforms.		Ongoing
Research		
Research commitments should look to build on previous research to ensure investment is not duplicated on topics that have already been	Research undertaken across GSA is checked against commitments, as well as strategic documents within	Ongoing

2022-2026 Recommendation	2022 Comment	Current Status
addressed. A national level register of research projects aligned with offsets and specific MNES would assist in reducing duplication (and increasing scientific collaboration) in the offsets research space.	ACT Government (e.g., action plans, strategies).	
Timing and delivery of commitments		
Provided that the overall outcomes for MNES are achieved, commitments that have specific targets should be flexible to respond to the different challenges and opportunities across the strategic assessment. Mechanisms that allow for flexible delivery of targets needs to be clarified at the commencement of the strategy.	This recommendation has been tackled during the 2018-22 reporting period. The new processes developed under the Adaptive Management Strategy and for OMPs allows for flexibility in meeting targets. Effectively, the overall commitment provides the required flexibility, while specifics around how and what is being achieved sits in the OMP.	Ongoing
Delivery of commitments could be improved by adopting an environmental stewardship program. The objective of this program would be to provide long-term support for private landholders to maintain and improve the extent and condition of MNES.	Environmental stewardship was perceived as an alternative option to LMAs – but LMAs unlikely to be a mechanism used for engaging rural lessees in offsets management in future. It is still an option to be considered by the ACT Government, but there are considerable challenges (legislative, governance, compliance etc.) that may preclude the use of this option. A plan review and reform project is currently being undertaken for the PD Act and associated legislation. Issues with LMA’s have been raised in the review.	Review further once the new planning system is in force.
For the 2022-26 reporting period, a clear template and process guidelines, communicated early in the review will expedite feedback.	Informal discussions with the Commonwealth clarified content of current report, but feedback on this report would assist with development of the next GSA Review report.	Ongoing.
Land Management Agreements		
Review the effectiveness of LMAs as a tool to facilitate the management of the offsets to achieve commitments and as a tool to measure and enforce compliance.	LMAs unlikely to be a mechanism used for engaging rural lessees in offsets management in future, as it has been challenging to ensure conservation outcomes are being met (especially with difficult weather conditions e.g. extreme rainfall, and drought). A plan review and reform project is currently being undertaken for the PD	Review further once the new planning system is in force.

2022-2026 Recommendation	2022 Comment	Current Status
	Act and associated legislation. Issues with LMA's have been raised in the review.	
Develop policy to understand options for advanced offsetting, both in the GSA and across the ACT.	Continuing to consider developing policy.	Outcome of policy review will be provided in the next Plan Review Report.
Reserve Management		
Government resourcing needs to allow for reserve management planning, implementation, monitoring, evaluation and reporting. Set up and allocate funding to an evaluation program.	Adequately resourced, with the exception of planning (currently under-resourced) and evaluation (not resourced).	Ongoing.
A new ACT Government urban connectivity project offers the opportunity for a multi-agency approach in planning for landscape scale connectivity for multiple species. Employing the outputs of this project to guide plantings will enhance conservation outcomes.		Ongoing
Multi-disciplinary approaches to developing planning tools yield good conservation outcomes even beyond the GSA offset sites (e.g. strategic grazing for GSM). However, processes and governance structures need to be developed early to ensure that, with staff turnover, corporate knowledge is not lost and program continuity is not compromised.		Ongoing
Adaptive Management Principles		
Set up and allocate funding to an evaluation program to improve review process for adaptive management (and increase understanding of AM principles across teams).	<p>Adaptive Management Strategy developed over the 2018-22 reporting period and guides implementation across GSA. The process within this adaptive management strategy will be applied to GSA Offset Management Plans being reviewed and drafted during the 2022-26 reporting period.</p> <p>Adaptive management can be difficult in practice, and the ACT Government are still establishing and refining our systems for providing ecological advice to land managers in a timely and efficient manner. However, progress has been made in the timeliness of information delivery that will assist in adaptively managing GSA offset sites.</p> <p>For 2022-26 reporting period, a review of the Adaptive Management Strategy may be required.</p>	Ongoing

2022-2026 Recommendation	2022 Comment	Current Status
Reporting		
For future GSA annual reports, guidance on whether previous financial reports have been suitable, and/or what information Commonwealth is looking for, on annual basis would improve efficiency of financial reporting.	Financial audit is undertaken site-by-site.	Ongoing
Guidance by Commonwealth around reporting requirements where there are lags in being able to demonstrate progression towards commitments would improve the efficiency and quality of future GSA reporting.		Ongoing
The timely delivery of annual reports could be improved by taking into account time frames for the ACT Government processes and negotiating more flexible timeframes with the Commonwealth Government. Further deliberations on this with interested parties including EPSDD, the Commonwealth, PCS, SLA.	This recommendation is reiterated in this plan review.	Ongoing
While monitoring capacity has improved greatly over between 2018-2022, capacity in data analysis/evaluation is still limited. Future reporting can be enhanced by engaging a suitably qualified staff member in-house. Alternatively, planning for ecological analysis and engaging statistical consultants early in reporting processes (annual, but also for land managers) would enhance current reporting.		Ongoing Evaluation has been created and resourced, including Data Analyst. An Evaluation Strategy will be developed for Offsets.
Funding		
Budgeting should be allocated to meet the resourcing requirements for ecologists, and administration, planning and evaluation processes. This will build internal capacity and help to achieve commitments. Set up and allocate funding to an evaluation program.	Allocations now meet resourcing requirements for ecologists, administration, planning and reporting.	Complete.
Undertake more focused research around MNES management and restoration to improve offset delivery.	Over the 2018-2022 reporting period, multiple ongoing positions have been secured to undertake ecological research associated with the GSA.	Ongoing Research is planned and delivered within the capacity of the team. Collaboration with ONC provides support to this objective.

9. Independent Audit

The Commissioner for Sustainability and the Environment completed the first independent audit of the GSA NES Plan in November 2017. The audit found that the majority of the commitments, a total of 19 (five with observations), were compliant. A total of 13 commitments were not compliant, five of which were identified as high risk.

Areas of non-compliance resulted largely from delays in timely delivery and implementation of the commitments across government agencies. Five corrective actions were issued for high-risk items to ensure commitments are met. All of the corrective actions had been completed by the 2021-22 financial year.

The second independent audit of the GSA was completed in July 2023, prepared by NGH Pty Ltd. The audit found that a total of 13 commitments were not compliant:

- Eight of these are non-compliant findings from the previous audit which cannot be closed out as they relate to timing;
- One is an ongoing non-compliant finding; and
- Four are new non-compliant findings.

EPSSD continues to work with relevant entities on improvements to the strategic assessment process and responses to the recommendations of the independent audit report.

The next Independent Audit is due in June 2028.

Table 5 Recommended actions for non-compliant findings identified during the audit process with timeframe of completion and status are presented below.

Commitment	Recommended action	Recommended timeframe	Status
3	Develop site-specific guidance documents for any future developments that indicate how the land use has considered adjacent MNES habitat (as required).	As required	Guidance document for Jacka is at the final stage of preparation. Jacka Stage 1 EDP was approved before the establishment of the Plan. Jacka Stage 2 has been lodged. The guidance document has not been approved but advice consistent with the guidance document will be provided as entity comments on the EDP DA. The Guidance document for Kenny is in preparation to be finalised before lodgement of the EDP for Kenny.
9	Finish the Nadjung Mada Nature Reserve Management Plan for approval by the Commonwealth.	31st October 2023	OMP for Nadjung Mada Nature Reserve is complete and will be submitted to the Commonwealth by 15 November 2023 (extension granted by DCCEEW).
12	Develop a process for contractor auditing and review of audit results.	31st October 2023	Under development
28	Revise the Strategic Bushfire Management Plan to include MNES considerations or develop site-specific management plans that address MNES requirements.	30th June 2024	Ongoing

Commitment	Recommended action	Recommended timeframe	Status
37	EPSDD to prepare response to altered spending and how this may be rectified in the future to meet the intended goals of the GSA.	30th June 2024	Ongoing

10. Financial Reporting

The majority of offset-site related work during this financial year has been undertaken by ACT Government employees as a direct allocation through four ACT Government budget initiatives:

- Enhancing the Protection of Endangered Species and Habitat (2015-16; project code 53804);
- Caring for our environment – Improving species and habitat protection (2016-17; project code 53786);
- Protecting grassland and conservation areas (2019-20; Capital investment only; project code 53956); and
- Protecting Canberra’s unique environment – Franklin Nature Reserve Enhancement (2021-22; project code 52318).

These initiatives have committed funding for the continued management of MNES in Throsby North, Throsby East, Kenny Broadacre, Kinlyside Nature Reserve and the Nadjung Mada Nature Reserve. These initiatives also fund other offset sites in the ACT Government offset program, and funding is allocated between sites as appropriate.

The 2021-22 ‘Funding Environmental offsets’ initiative built on a previous 6-month budget initiative, (‘Delivering Environmental Offsets’ (2020-21; project code 52275)), that was delivered mid-year in 2020-21 to provide interim support for offset delivery through the creation of two additional ranger positions and the extension of a third, established ranger position. The ongoing 2021-22 initiative (noted above) funded these positions permanently, building further capacity and certainty for offset delivery. These positions contribute heavily to GSA offset-site management and OMP implementation including the ongoing reserve establishment actions for Nadjung Mada Nature Reserve.

10.1 Funding expenditure and variations

Table 3 below compares the funding expenditure estimated in the Plan to the actual spend amount in 2022-23. Some differences between these figures are due to changes in land management requirements or operational difficulties in achieving actions during COVID-19 lockdowns, and the significant increase in rainfall across the region due to a La Niña event. Importantly, increased rainfall in 2020, 2021 and 2022 significantly impacted the ability of PCS to conduct certain management activities (particularly those requiring heavy machinery being on site), which altered spending patterns.

Funding amounts provided in **Table 3** below include capital and recurrent expenditure over the 2022-23 financial year. In previous years, whilst capital expenditure was recorded by site, recurrent expenditure was not able to be recorded by site due to financial coding issues. During 2020-21, EPSDD and PCS commenced discussions to improve the tracking of recurrent expenditure by offset site. In particular, greater efforts were made to code invoices to specific sites (via cost centres), assign appropriate Natural Account codes (according to the accounting standards developed by the Australian Accounting Standards Board) and program codes to better identify and track expenditure across offset sites. These improvements are ongoing.

Despite these process improvements, it is noted that it takes significant time to review and confirm site-

specific spending due to the complexities and requirements of the various financial recording, processing, and reporting applications used by ACT Government. Some discrepancies may remain between the Financial Reporting (see table 5) section (completed by PCS) and the Financial Audit (see table 4) section (completed by EPSDD Strategic Finance with input from PCS). For example, the audit may not include all capital spends. Improvement activities are ongoing and will continue into 2022-23 to address any discrepancies. However, due to whole of government processes and financial requirements outside the control of PCS and Strategic Finance, some discrepancies will likely remain, especially in terms of estimations of employee cost.

Funding for GSA activities in 2021-22 were originally estimated to be \$933,250 (capital and recurrent, non-employee expense). However, reductions and reallocations in funding across EPSDD in response to COVID-19 restrictions and budget impacts resulted in a final budget for 2021-22 of \$818,250. This equates to a 12.3% variation (reduction) in budget allocations for GSA offset sites. Staffing costs were maintained in the same period. Despite reductions in allocated funds for this financial year, and impacts from lockdowns and weather, base activities were maintained across the GSA.

It is important to note that this was a reduction in ongoing budget allocations from approved ACT Government budgets, rather than a variation from the original estimates in the Plan, which is outlined further in Table 3.

Table 3 Comparison of estimated expenditure between the Plan and 2022-23 expenditure

Offset Sites	Funding Secured (financial year)	Estimated expenditure in the Plan for 2022-23 (Table 5.3 of the Plan)	Estimated actual spend in 2022-23	Comments
Direct Offsets				
Mulligans/ Gorooyarroo offset sites (incorporating Kenny Broadacre, Throsby North and Throsby East)	2015-16	\$296,850.91	\$93,347.44	<p>These sites are in the “ongoing management” phase.</p> <p>All obligations and management objectives were achieved, with significant investment in invasive plant control and restoration actions.</p> <p>The original budget estimate also included costs to undertake works that are no longer required. This included large costs estimated for Throsby East to rehabilitate potentially contaminated land. Subsequent investigations determined that this was not needed.</p>
Kinlyside	2015-16	\$0	\$64,990.02	<p>This site is in the “ongoing management” phase.</p> <p>The original budget in the Plan assumed that land management costs for Kinlyside would be able to be met by the rural leaseholders. The ACT Government recognised that additional funding and land management activities by PCS were required to aid rural leaseholders in maintaining the MNES values on the land to meet the Plan’s commitments. This included activities required to deliver on the approved Habitat Improvement Plans, as well as other works to improve site condition (e.g., gully erosion abatement).</p> <p>This approach is consistent with the ACT Environmental Offsets Policy and the ACT Environmental Offsets Policy Delivery Framework.</p> <p>From 2023-24, PCS will take full responsibility for delivering commitments within the Nature Reserve, and funding for Kinlyside will likely increase as a result.</p>
Jacka, Taylor and Horse Park North	2016-17	\$110,300.40	\$128,947.21	<p>These sites are now in the “ongoing management” phase.</p> <p>In 2022-23, significant funds were invested in invasive plant control, restoration and in educational placemaking activities (to help residents of newly built adjacent suburbs to integrate with and understand these areas).</p>
Kenny (Nadjung Mada Nature Reserve)	2019-20 2020-21 (6 months interim funding only) 2021-22	\$610,828.80	\$127,491.68	<p>This site is in its “reserve establishment” phase.</p> <p>Noting that original estimates were made in 2013, this estimated amount in the Plan did not reflect true costs. The original estimate also included a potential costly remediation of a spoil site (chemical sheep dip) that has since been assessed as unnecessary. As such, actual establishment and management costs for this site are significantly reduced compared to original estimates.</p> <p>This site received ongoing funding in the 2021-22 ACT Budget process to establish the reserve, with 2022-23 activities focusing on reserve security, signage, and developing a plan for adjacent Old Well Station Rd. There also has been significant investment in invasive plant control and restoration actions.</p>
Staff	2015-16 2016-17 2019-20 2021-22	\$451,246.18	\$ 865,518.00	<p>Estimated funding spent in the 2022-23 financial year on employee’s accounts for operational, planning and monitoring/research staff required to enable effective management of avoided and offset areas. This may include, for example, administration, coordination, planning, research, and monitoring of the offsets program. The estimated expenditure from the GSA plan only included an estimated cost for on-ground staff. On-ground staff expenditure is estimated to be \$503,740.</p> <p>It should be noted that such staff deliver programs and actions across the ACT Government suite of offset sites and has as such been estimated as a percentage of work time.</p>
Indirect Offsets				
Research	2015-16 2016-17	\$99,999.24	\$30,483.94	<p>Research funding for 2022-23 has focused on information underpinning HIPs and the evaluation of ecological condition across offset sites.</p> <p>During 2022-23, research on SPs also continued. See commitment items in Table 2 for details. The ongoing nature of the SP project, as well as the inclusion of the research into related SP projects across the region, has seen significant opportunities for cost savings as well as the ability to meet actions in-house.</p> <p>Expenditure on research remains below 10% as per the requirements of the Plan.</p>

10.2 Financial summary

Table 4 below is a financial summary prepared by EPSDD Strategic Finance for expenditure spent in the Gungahlin Strategic Assessment offset areas for 2022-23.

Table 4: Financial summary Throsby	
Consultant, Contractors	5,400.00
Consumables	15,437.52
Infrastructure	3,664.25
Regulatory Fees	613.14
Revegetation	30,159.55
Tools, Equipment	45,949.59
Weeds	29,545.45
Total	130,769.50

Kinlyside	
Infrastructure	4,131.80
Revegetation	9,796.73
Weeds	51,061.49
Total	64,990.02

Jacka, Taylor, HPN	
Consultant, Contractors	28,197.06
Consumables	6,540.06
Restoration, Revegetation	21,988.09
Weeds	72,197.76
Total	128,922.97

Kenny	
Consultants, Contractors	8,403.00
Consumables	383.16
Restoration, Revegetation	13,118.93
Tools, Equipment	9,295.01
Weeds	91,701.76
Total	122,901.86

10.3 Projected 2023-24 Expenditure

Expenditure for 2023-24 will focus on delivering relevant management actions identified in the individual OMPs for Kinlyside and the Throsby complex, delivering actions from the Nadjung Mada Nature Reserve OMP (once approved), delivering actions associated with meeting commitments of the Plan.

Projected expenditure includes but is not limited to the following activities:

- Continuing the major establishment phase of the Nadjung Mada Nature Reserve, including conducting major invasive plant control programs, and where appropriate, planning for

tracks, trails, reserve borders, and restoration. Such activities will extend beyond 2023-24 (Commitments 21 and 22).

- Land management actions to be delivered in conjunction with leaseholders at Kinlyside outside the nature reserve and delivered solely by pcs within the nature reserve (Commitments 9 and 23).
- Continued planning and implementation of restoration activities within targeted BGW areas (Commitment 26).
- Ongoing operational programs such as invasive weed and animal control across all offset sites (Commitments 24 and 25).
- Continued delivery of the Superb Parrot monitoring and research project (Commitment 31).
- Continued delivery of relevant components of the offsets monitoring program (Commitment 14).
- Continued delivery of the SLL translocation program in Nadjung Mada Nature Reserve.

It is expected (based on current budget allocations) that expenditure on GSA sites in the 2023-24 financial year will be approximately \$1,066,000 in capital funding (all allocated to capital works projects at Nadjung Mada Nature Reserve, including Old Well Station Road upgrades) and \$450,325 in recurrent, non-employee funding. Employee costs, based on previous years, are expected to total approximately \$0.9-1.1M (rising slightly from 2022-23 due to salary increases likely to eventuate from revised Enterprise Agreements).

Funding for the 2023-24 financial year has not been officially confirmed at the time of writing, and any variations will be reported in 2023-24 annual report.

10.4 Future Funding

Due to the COVID-19 pandemic and associated economic impacts, the 2021-22 ACT Budget was delayed from the usual June release to October 2021, and the 2022-23 ACT Budget was not released until 2 August 2022¹. The 2023-24 ACT Budget was released on the 27 June 2023.

Delayed release of budgets had flow on effects for the confirmation of Directorate and team budgets, and this continues to be the case for 2023-24. There is increased certainty about future funding for 2023-24, but some variations may still occur with reallocation of base funding.

The GSA funding includes a recurrent (expense) component in its budget allocation which is aimed at providing on-going funding from year five (2017-18) and beyond. However, this component is a part of the ACT Government base funding and is subject to re-allocation, if necessary, as occurred in 2021-22 and in 2022-23. However, the 2021-22 budget process provided fresh initiative funding for the GSA for a four-year period, increasing funding certainty for some offset sites (e.g. Nadjung Mada Nature Reserve).

Currently, the GSA offset sites are funded by multiple separate budget initiatives, which also include funds to manage other PCS managed offset sites. The total amount of recurrent funds secured within these business cases is estimated at \$3.801M per annum, of which \$450,325 is expected to fund GSA offset sites in 2022-23. The total amount of capital funds secured within these business cases for 2022-23 is \$2.742M, of which, it is estimated that 1.066M will fund activities in GSA sites (specifically Nadjung Mada Nature Reserve).

¹ Andrew Barr MLA, ACT Chief Minister and Treasurer. Chief Minister and Treasurer's Message.

<https://www.budgetconsultation.act.gov.au/chief-minister-and-treasurers-message>

While the current level of on-going recurrent funding is expected to continue to be provided to manage GSA sites, costs of undertaking on-ground management and restoration have generally increased (due to inflation and post-pandemic pressures). Further, original estimates for restoration were underestimated. Further funding, if required, may be sought in the future to ensure delivery of all GSA commitments.

11. Areas of Non-Compliance

There were two related potential non-compliance events reported during 2022-23. These matters are still under investigation and will be reported in the 2023-24 annual report.

As reported in previous Annual Reports, potential long-term decline of MNES has been monitored for several years in Kenny and Kinlyside, this continued during the 2022-23 reporting period.

Once established, any matters of non-compliance will be investigated and reported to DCCEEW as soon as possible.

Appendix A – Completed Commitments