



**ACT**  
Government

Environment, Planning and  
Sustainable Development

# Gungahlin Strategic Assessment Annual Report 2019-2020

Annual report for the Gungahlin Strategic Assessment and Biodiversity Plan for the period  
1 July 2019 to 30 June 2020

**Environment, Planning and Sustainable Development Directorate, ACT Government**

**August 2020**

## **Acknowledgements**

The Plan Implementation Team would like to extend appreciation to the contributions made to the Annual Report by the Chief Minister, Treasury and Economic Development Directorate, the Suburban Land Agency and the Environment, Planning and Sustainable Development Directorate.

## **Key Contact**

Impact Assessment  
Planning Delivery  
Environment, Planning and Sustainable Development Directorate  
GPO Box 158  
CANBERRA ACT 2601

[www.planning.act.gov.au](http://www.planning.act.gov.au)  
[EPDImpact@act.gov.au](mailto:EPDImpact@act.gov.au)

# Contents

<b>Acknowledgements</b> .....	<b>ii</b>
<b>Key Contact</b> .....	<b>ii</b>
<b>Contents</b> .....	<b>iii</b>
<b>List of Abbreviations</b> .....	<b>iv</b>
<b>Executive summary</b> .....	<b>1</b>
Plan Implementation Team chairperson statement.....	1
<b>Background</b> .....	<b>2</b>
Annual Reporting under the Plan.....	2
Commitments.....	2
Plan Implementation Team.....	3
<b>Corporate outcome: Organisational effectiveness</b> .....	<b>5</b>
Land Release Program.....	5
Gungahlin Town Centre.....	6
Jacka.....	6
Taylor .....	6
Throsby.....	6
Kenny .....	6
Kinlyside.....	6
Franklin.....	6
<b>Plan Implementation Team (PIT)</b> .....	<b>9</b>
Background.....	9
Membership.....	9
<b>Working groups</b> .....	<b>9</b>
Internal working group.....	9
Consultation and engagement groups.....	9
<b>Report on performance by outcome/commitment</b> .....	<b>10</b>
Independent Audit .....	21
Plan Review Report .....	21
Financial Reporting.....	22
Financial audit .....	25
Projected 2020-21 Expenditure .....	26
Future Funding .....	26
Areas of Non-Compliance.....	27

**Table 1**

## List of Abbreviations

ACT	Australian Capital Territory
CEMP	Construction Environment Management Plan
CMTEDD	Chief Minister, Treasury and Economic Development Directorate
DA	Development Application
DAWE	Department of Agriculture, Water and the Environment (Cwth) (formerly DoE)
DoE	Department of the Environment and Energy (Cwth) (superseded by DAWE)
ED	Economic Development (Part of CMTEDD)
EDP	Estate Development Plan
EPBC Act	<i>Environment Protection and Biodiversity Conservation Act 1999</i> (Cwth)
EPSDD	Environment, Planning and Sustainable Development Directorate (previously Environment and Planning Directorate and Environment and Sustainable Development Directorate)
GSA	Gungahlin Strategic Assessment
LMA	Land Management Agreement
MNES	Matters of National Environmental Significance
NCA	National Capital Authority
PIT	Plan Implementation Team
SLA	Suburban Land Agency
TCCS	Transport Canberra and City Services (formerly Territory and Municipal Services Directorate)
the Plan	Gungahlin Strategic Assessment Biodiversity Plan

Note: References to government agency names in this report are accurate at 30 June 2020.

## Executive summary

### *Plan Implementation Team chairperson statement*

The Territory continued to demonstrate commitment to implement the Gungahlin Strategic Assessment Biodiversity Plan (the Plan) during the 2019-20 reporting period. This period was influenced by the effects of prolonged drought and saw unprecedented challenges from bushfire during summer and from the COVID-19 pandemic for the remainder of the financial year.

The Canberra region experienced heavy smoke throughout December and January from surrounding bushfire affected areas of southeast Australia and later from the ACT Orroral Valley fire. Operational staff faced limited opportunities to work outside during times of poor air quality and were further burdened with fire-fighting priorities. The advent of the COVID-19 pandemic added compounding elements of uncertainty to business as usual and continues to have a lasting impact.

I am pleased to report that the Gungahlin strategic assessment areas containing Matters of National Environmental Significance were fortunately spared from the devastating impacts of bushfire damage. Land releases at Jacka, Taylor and Throsby continued in harmony with Plan requirements.

Research on the Golden Sun Moth, Superb Parrot and Box Gum Woodland habitat continued. Positive observations were made in relation to the Super Parrot, with a marginal increase in Superb Parrot breeding output observed compared to 2015 baseline data. The birds continued to breed successfully and raise chicks at pre-development levels.

Strategic activity involving coordination of multiple stakeholders has set the planning foundations for the future Kenny Nature Reserve. This reserve is on track to be established prior to construction of urban infrastructure in Kenny. Once established, the Kenny Nature Reserve will complete the suite of nature reserve areas required by the Plan.

Ongoing recurrent funding for 2020-21 for GSA sites is expected to be \$1.4M. These contributions and the employment of dedicated staff to implement offset management plans reflect the Territory's commitment to and investment into the environment and biodiversity conservation outcomes of the Plan.



Brett Phillips

Chair – Plan Implementation Team  
Executive Group Manager  
Environment, Planning and Sustainable Development Directorate

*31 August 20*

## Background

In October 2012, the ACT and Commonwealth governments commenced a strategic assessment under Part 10 of the *Environment Protection and Biodiversity Conservation Act 1999* (Cwth) (the EPBC Act). The focus of the strategic assessment was to assess the potential impacts from development of the remaining identified green-field sites in Gungahlin, the northern-most district in the ACT, on Matters of National Environmental Significance (MNES) protected under the EPBC Act.

The [Gungahlin Strategic Assessment Biodiversity Plan](#)<sup>1</sup> (the Plan) was endorsed on 20 June 2013 and the actions associated with the development were approved on 17 July 2013. As a result of the approval, the Plan has streamlined the development process by removing the need for site by site assessment of MNES.

The Plan outlines the activities required to complete the urban development of the Gungahlin district. Accordingly, the Plan is defined by the establishment and implementation of measures to effect urban development and biodiversity conservation within Gungahlin. The Plan is relevant to the following areas as they appear in the Territory Plan:

- Urban development areas of Kenny, Throsby, Moncrieff, Jacka (north), Taylor;
- Urban development areas (currently zoned Commercial (CZ2) and Mixed Use (CZ5)) in the Gungahlin Town Centre (east precinct); and
- Conservation areas, including broad acre areas, being additions to Gorooyarroo and Mulligans Flat Nature Reserve, Kenny Nature Reserve, Horse Park north broad acre, Kenny broad acre and Kinlyside Nature Reserve.

The assessment area and Plan in summary is presented as **Figure 1**.

## *Annual Reporting under the Plan*

This annual report is a comprehensive report on the activities related to the Gungahlin Strategic Assessment Biodiversity Plan (the Plan) throughout the preceding year, being 1 July 2019 to 30 June 2020. The annual report provides information about ACT Government activities and performance against the commitments of the endorsed Plan.

## *Commitments*

The Plan identifies a range of commitments to be undertaken by the ACT Government targeting MNES affected by urban development in Gungahlin on the basis of analysis presented in the Gungahlin Strategic Assessment - Assessment Report. Commitments in the Plan build upon the long history of forward and strategic environmental planning in the ACT around the avoidance and mitigation of environmental impacts resulting from development.

In summary, the commitments include:

- Avoidance of areas that support habitat for MNES on land presently designated by the Territory Plan as developable (including RZ1 – Suburban and NUZ1 - broadacre);

---

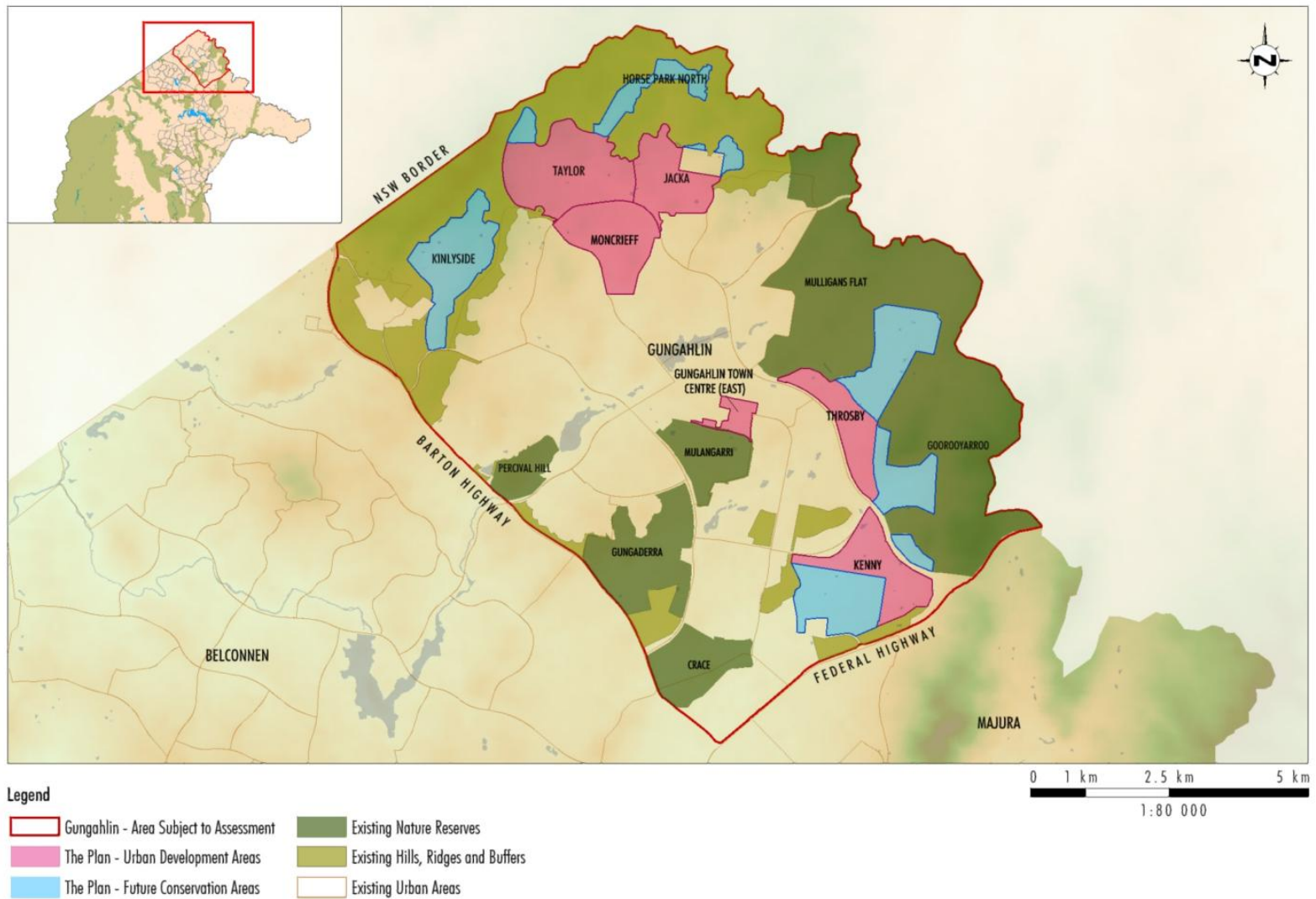
<sup>1</sup>[http://www.environment.gov.au/system/files/pages/b58dc6ac-a4f2-4a9e-9dad-4f0752e0f050/files/gungahlin-biodiversity-plan\\_0.pdf](http://www.environment.gov.au/system/files/pages/b58dc6ac-a4f2-4a9e-9dad-4f0752e0f050/files/gungahlin-biodiversity-plan_0.pdf)

- Increased investment in habitat enhancement beyond the minimum level required by ACT legislation; and
- Increased investment in research targeted at the affected MNES and guided by action planning objectives.

Direct impacts on MNES have either been avoided (pink-tailed worm-lizard, superb parrot breeding sites, important migratory bird habitat) or minimised through protecting core, well connected endangered woodland or habitat (box-gum woodland, golden sun moth or striped legless lizard habitat).

### ***Plan Implementation Team***

The Plan Implementation Team (PIT) is responsible for both implementing the Plan and also ensuring that accurate records are maintained for all activities that are undertaken in relation to implementation of the Plan. PIT activities are described in the PIT Charter. Further information on the PIT is described in the relevant section of this report.



**Figure 1: Overview of the Plan**

## Corporate outcome: Organisational effectiveness

The strategic assessment approvals monitoring and implementation is the responsibility of the PIT, which was coordinated by the Impact Assessment team within the Environment, Planning and Sustainable Development Directorate (EPSDD) during the 2019-20 financial year.

To ensure the PIT members are informed on matters for consideration, members of each Directorate have formed an informal working group to discuss issues and make recommendation to the PIT. This model has been well received by the PIT and the working group members.

## Land Release Program

As reported in previous annual reports, each year the ACT Government prepares a four-year Indicative Land Release Program setting out the ACT Government's intended program of residential, commercial, industrial and community land releases. The Program is indicative and is subject to change as market conditions alter or as ACT Government priorities adjust. The Planning, Land and Building Division of EPSDD is responsible for preparing the program in conjunction with other relevant Territory directorates.

The ACT Government plans for the supply and release of land, taking account of factors such as forecast population changes, household changes, demand for land and the capacity to cost effectively deliver key infrastructure and services.

The four-year Indicative Land Release Program enables the ACT Government to deliver on its economic and social strategies for the Territory.

The 2019-20 to 2022-23 Indicative Land Release Program includes the following release targets for Gungahlin:

- 4,245 dwellings
- 52,597m<sup>2</sup> of mixed-use site area
- 96,900m<sup>2</sup> of commercial site area
- 130,944 m<sup>2</sup> of community facility site area

The actual 2019-20 land release for Gungahlin was:

- 1,096 dwellings
- 30,791m<sup>2</sup> of mixed-use site area
- 16,341m<sup>2</sup> of commercial site area
- 47,700 of community site area

More information about the Indicative Land Release Program is available on the following website:

[https://www.planning.act.gov.au/\\_data/assets/pdf\\_file/0006/1370652/2019-Indicative-Land-Release-Program.pdf](https://www.planning.act.gov.au/_data/assets/pdf_file/0006/1370652/2019-Indicative-Land-Release-Program.pdf)

## Gungahlin Town Centre

The Gungahlin East project approved in 2017 finished civil construction in 2018-19 with releases of sites to developers and occupiers commencing in February 2019. The remaining commercial, community and residential sites will be sold in line with the Indicative Land Release Program. [Draft Variation 364](#) applies to development applications lodged on or after 30 September 2019, allowing urban intensification in Gungahlin East.

## Jacka

The development application for a new residential estate within Jacka has progressed based upon a yield of 700 dwellings, community facilities areas, local shops, playing fields and open spaces.

## Taylor

The Taylor estate has continued to be developed as per its development approval including a new school, playing fields, single residential dwellings, multi-unit sites, open spaces, community uses and a local centre.

## Throsby

The Throsby estate has continued to be developed as per its development approval including a proposed new school, future playing fields, single residential dwellings, multi-unit sites and open spaces. Final residential release is expected in 2020-21.

## Kenny

The proposed suburb of Kenny was managed under a rural lease during 2019-20. An initial localised release to facilitate delivery of the future Kenny High School is scheduled for 2020-21. EPSDD is continuing with due diligence work to determine the most suitable outcomes and development options for this suburb. Preparation of an Estate Development Plan(s) is expected to commence in 2020-21. The Territory Plan Variation to rezone land within the future suburb to formally establish the Kenny Nature Reserve has not been commenced due to the continuing planning and infrastructure investigations. The indicative Kenny Nature Reserve environmental offset site and adjacent indicative land uses is presented in **Figure 2**.

## Kinlyside

The Kinlyside Nature Reserve was created and gazetted through a Territory Plan Variation on 6 November 2014. The Nature Reserve includes a large section of land adjacent to Casey. The primary objective of establishing the offset area was to permanently protect and enhance the extent and quality of the White Box - Yellow Box - Blakely's Red Gum Grassy Woodland community and the population and habitat of the Golden Sun Moth.

Kinlyside Nature Reserve included some areas of land managed under rural lease for agricultural purposes. Existing leases were periodically monitored and reviewed in 2019-20 to ensure optimal conservation biodiversity outcomes in line with the Plan and the [Kinlyside Offset Management Plan](#).

## Franklin

[Franklin grassland environmental offset](#) site was established in May 2020 through a Territory Plan variation at Block 5 Section 47 Franklin. It is a 20-hectare offset area for Golden Sun Moth habitat and Natural Temperate Grasslands. Although located in the GSA area, the offset is for development (road works) that occurred outside the GSA area in Yarralumla. The Franklin grassland environmental offset site is shown at **Figure 3**.

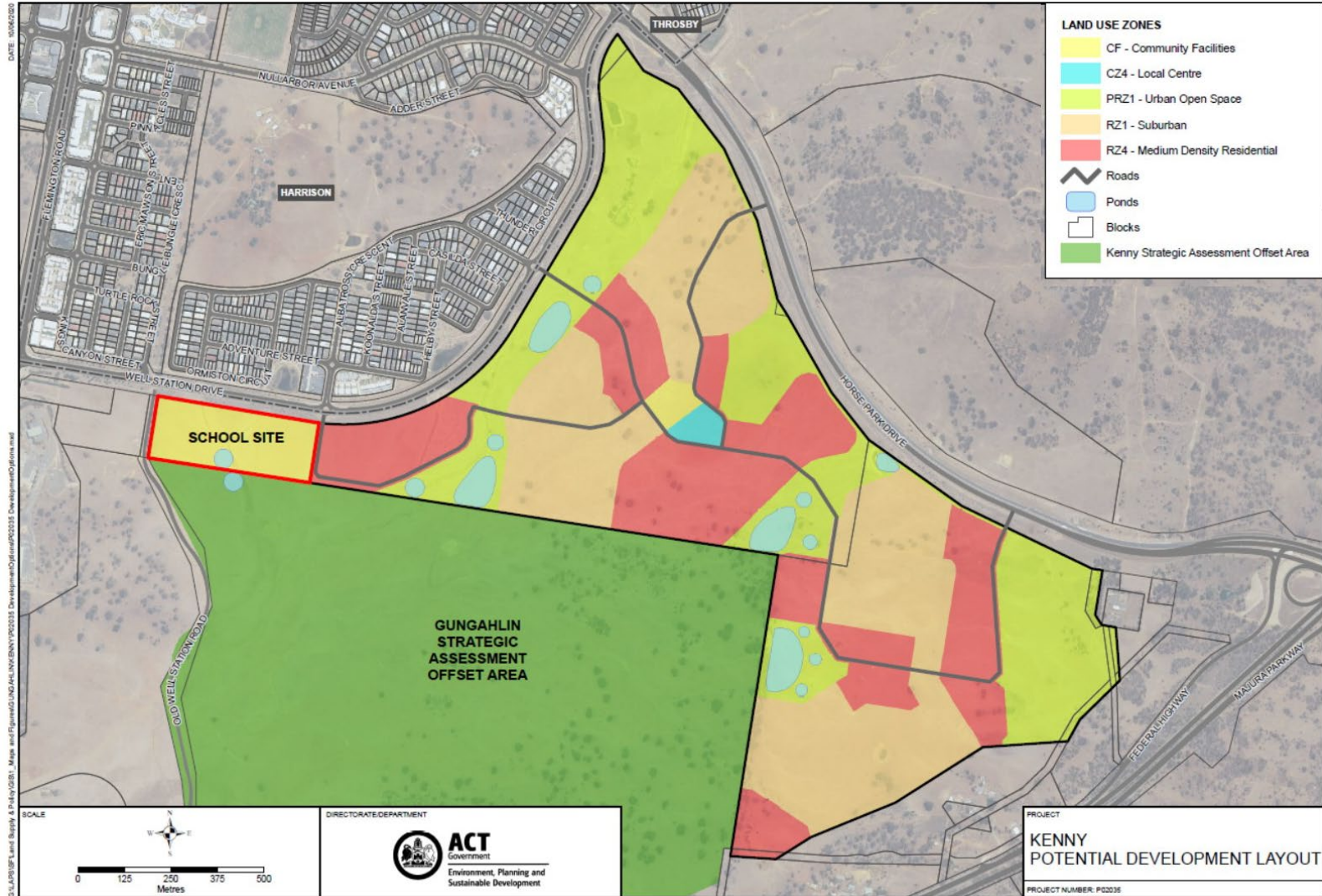


Figure 2: Kenny indicative offset area and potential land use zones for Kenny

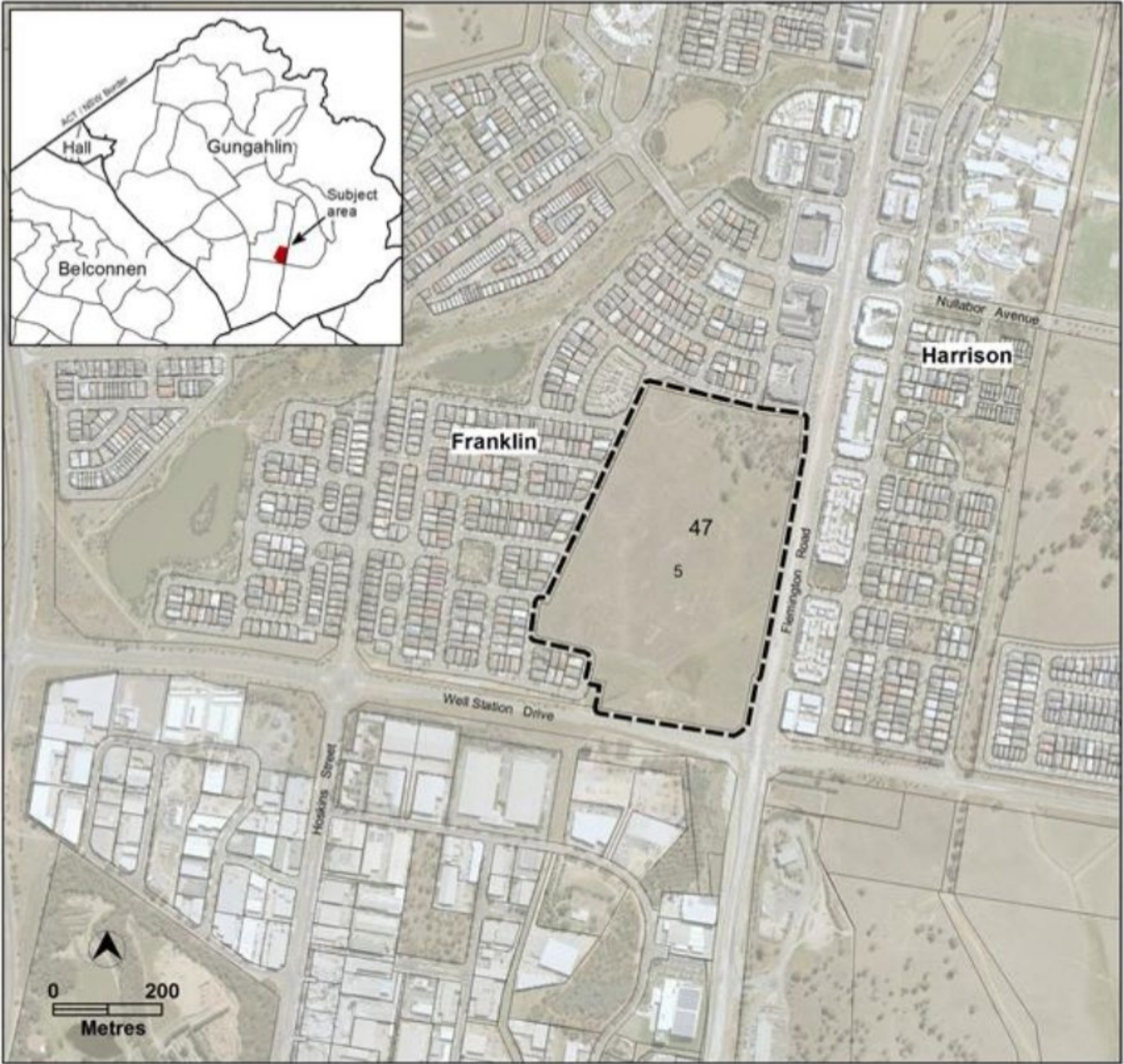


Figure 3: Franklin Grassland, Block 5 Section 47 Franklin

## **Plan Implementation Team (PIT)**

### ***Background***

The PIT is responsible for all aspects of implementation of the Plan in addition to ensuring accurate records are maintained of all activities that are conducted in relation to implementation of the Plan. Commitment 6 of the Plan describes the requirement of the ACT Government in establishing a PIT.

The PIT was established in 2014 and was a multi-agency group drawn from executives within the former Environment and Planning Directorate (EPD), Chief Ministers, Treasury and Economic Development Directorate (CMTEDD) and coordinated by Economic Development (ED), CMTEDD. However, from 1 July 2016 the responsibility for compliance monitoring and reporting vests in Planning Delivery, EPSDD. The PIT membership was reviewed in response to the ACT Directorate restructure. The revised PIT membership and Charter was approved by the former Commonwealth Department of Environment on 13 January 2017.

The PIT team will continue to be guided by input from relevant ACT agencies to ensure consistency and efficiency in implementation and investment (for example, coordination of weed management activities across reserve and offset areas).

The PIT will operate for the 20-year life of the Plan. Upon conclusion of the Plan, ongoing management responsibility will divest in the appropriate ACT Government agencies. The PIT will ensure the appropriate transfer and accessibility of information gathered over the life of the Plan. The PIT will operate with a mandate to ensure a whole-of-government approach to implementation of the Plan.

### ***Membership***

PIT members include executive representation from EPSDD and CMTEDD. As at 30 June 2020 the PIT comprised:

- Planning Delivery, EPSDD (Lead Directorate);
- Environment Division, EPSDD;
- Suburban Land Agency, EPSDD;
- Policy and Cabinet, CMTEDD; and
- Treasury, CMTEDD.

## **Working groups**

### ***Internal working group***

The Gungahlin Strategic Assessment Working Group and Environmental Offsets Working Group comprises members from multiple divisions within EPSDD. These working groups meet during the year to discuss implementation and delivery of the commitments under the Plan.

### ***Consultation and engagement groups***

Periodic engagement occurs with external NRM groups to assist implementation of the Plan through consultation, community engagement and volunteer operational activity. Examples of groups involved in the Gungahlin Strategic Assessment include the [Woodlands and Wetlands Trust](#), the Australian National University and local experts.

## Report on performance by outcome/commitment

Table 2 describes the commitments from the Plan and the status of each commitment. Items reported as complete at the end of the 2019/2020 reporting period are shaded in green for convenience.

Item	Commitment	Responsibility (from 1 July 2018)	Comment	Timing and Date
1	Variation to the Territory Plan and amendment to the National Capital Plan for all proposed land use changes (including creation of Nature Reserves) in accordance with the Plan.	EPSDD/NCA	<p>Timing for the establishment of nature reserves is linked to relevant development activities.</p> <p>The Development Application for stage 1 of the Jacka 2 estate was publicly notified in June 2020. Subject to planning approvals, construction of the estate is scheduled to commence in mid-2021. The master plan for this estate includes formalisation of the existing wetlands in the south and the future hills, ridges and buffer zones to the north.</p> <p>Approximately 65% of the proposed developable area within Taylor has been released with the remainder scheduled for release in 2020-21, in accordance with draft Indicative Land Release Program.</p>	<p>A future Territory Plan Variation to establish Kenny Nature Reserve area will result in majority completion of commitment item 1.</p> <p>Other land use changes have been and will continue to be uplifted after relevant estate development plans are approved.</p>
2	<p>Develop and submit to the Department of the Environment (DoE) for approval, the framework for investment in offsets, monitoring, reporting, adaptive management, compliance and enforcement. This will identify:</p> <ul style="list-style-type: none"> <li>a) indicative monitoring program for: <ul style="list-style-type: none"> <li>i. all MNES affected by the Plan;</li> <li>ii. newly created nature reserves;</li> <li>iii. Land Management Agreements for avoidance areas on NUZ3 – Hills Ridges and Buffers;</li> </ul> </li> <li>b) reporting requirements and frequency for: <ul style="list-style-type: none"> <li>i. standard activities including monitoring, financial performance, measured outcomes;</li> <li>ii. reporting requirements for unanticipated or unapproved incidents.</li> </ul> </li> <li>c) process for review, improvement, approval and incorporation of new procedures within an adaptive management framework;</li> <li>d) compliance and enforcement procedures associated with design, construction and operation phase activities.</li> </ul>	PIT	<p>The framework for investment in offset management was approved by DoE on 2 November 2014. (DoE reference SA/20)</p>	Complete.
3	Provide documented guidance on the development of concept plans to ensure appropriate land use planning for areas adjacent to MNES habitat and associated buffers for all urban development including specific consideration of the estate design/layout. This is inclusive of requirements for Asset Protection Zones (APZ) between the buffer zone and any residential development.	PIT	<p>Concept plans or similar planning documents (structure plans or planning and design frameworks) may not be required for all suburbs.</p> <p>Guidance documents have been prepared for Throsby, Taylor and Moncrieff. Due to the progress development lifecycle stage of these developments, there is limited need or scope for changes to the strategic plans and frameworks.</p> <p>Moncrieff and Throsby are very close to finalised in terms of SLA development, with Taylor scheduled to transition to all 'land ready' in 2020-21.</p> <p>Guidance documents for Kenny will be prepared as required.</p>	Ongoing. Prior to lodgement of EDP for each suburb. The specific timing will be determined as required by each development area.

Item	Commitment	Responsibility (from 1 July 2018)	Comment	Timing and Date
4	Review and update Land Management Agreements (LMA) or management plans for all avoided areas of NUZ3 – Hills, Ridges and Buffers to ensure consistency with, and application of commitments of the Plan. As a part of this action, baseline condition assessment of all avoided areas including NUZ3 will be undertaken and LMAs will include conditions for compliance and enforcement.	EPSDD	Negotiations for review and update of LMAs occurs where necessary between EPSDD and rural lease holders. Two LMAs within the GSA were updated in the 2019-20 period. Licences have been prepared under section 273 of the <i>Nature Conservation Act 2014</i> to enable rural lease holders to undertake various land management activities in avoided hills, ridges and buffer zones (NUZ3). Baseline assessment of areas has been completed as per Commitments no. 13, 14.	Ongoing.
5	Implement cat containment policy in all urban development areas.	TCCS	The following GSA suburbs were declared cat containment areas under the <i>Domestic Animals Act 2000</i> . Bonner, Crace, Forde, Gungahlin Town Centre east, Jacka, Moncrief, Taylor and Throsby.	Complete for all suburbs except Kenny which has not commenced. See <a href="#">DI2019-33</a>
6	Establishment of the 'Plan Implementation Team' (PIT); and Submission of initial / indicative team membership and charter to DoE for approval.	Whole of ACT Government	Establishment of PIT within 3 months of Plan endorsement Submission of Charter to DoE within 12 months of Plan endorsement.	Complete. PIT established on 17 January 2014. Charter submitted to DoE on 5 May 2014. Amended Charter was approved by DoE on 13 January 2017.
7	Establishment of a suitable mechanism to enable management of funds provided to the PIT for implementation of the Plan.	ACT Government	Funding to implement the actions as described in the Offset Management Plans was included in the 2016 ACT Government Budget.	Complete.
8	Develop and submit to DoE for approval a program of implementation of all of the commitments in the Plan.	PIT	The Program of Implementation was submitted on 11 May 2015. This is being negotiated and reviewed with the PIT where necessary.	Ongoing.
9	Develop a Reserve Management Plan for all new nature reserves in order to provide for adaptive management and condition improvement of the reserve in accordance with the objectives and commitments of the Plan.	EPSDD	Completion of reserve management plans for this item requires creation of the final nature reserve at Kenny. Note that reserve management plans for existing nature reserves are expected to evolve over time (e.g. Kinlyside and Throsby plan reviews expected in 2020-21).	Creation of Kenny Nature Reserve (scheduled for 2021-22) is required before development occurs. A reserve management plan will be developed approximately 6 months after establishment of Kenny Nature Reserve.
10	Develop amended Reserve Management Plans for existing reserves into which additional land is included as a result of the Plan in order to provide for adaptive management and condition improvement of the reserve in accordance with the objectives and commitments of the Plan.	EPSDD	The Mulligans Flat and Goorooyarroo Offset Management Plan is completed and was published on the <a href="#">ACT Environmental Offset Register</a> in May 2016.	Complete.
11	Develop and submit to DoE for approval, the framework for CEMPs for areas directly or indirectly affecting MNES. This shall include the monitoring, reporting and compliance requirements of: <ul style="list-style-type: none"> <li>contractors undertaking physical works; and</li> <li>ACT Government officers or its representatives in auditing performance under the CEMP.</li> </ul>	PIT	Within 3 months of establishment of the PIT.	Completed on 20 December 2013

Item	Commitment	Responsibility (from 1 July 2018)	Comment	Timing and Date
11a	Review and approve (subject to compliance with the Plan) CEMPs submitted for all new construction projects within the area subject to the Plan.	PIT	This is required to occur prior to the commencement of construction in development and conservation areas in the Plan. The CEMP procedure developed in 2018-19 was followed and seven CEMP's for development in the development areas and infrastructure in the avoidance areas were endorsed during 2019-20. CEMP's were reviewed for compliance with the GSA biodiversity plan and the approved framework for CEMP's. For example, the CEMP's for the suburb of Taylor section 3 stage 2 and stage 3 were endorsed.	Ongoing.
12	Coordinate with TaMS – Asset Acceptance to ensure all obligations of contractors with respect to management of MNES in accordance with the Plan have been implemented prior to hand-over of assets to the Territory.	PIT	Prior to practical completion of each development contract, TCCS (formerly TaMS) will engage with the appropriate persons within their Directorate to ensure this requirement is achieved. All development applications (DA) and estate development plans (EDP) in the GSA are referred to the Impact Assessment team to ensure compliance with the GSA Plan. Conditions are placed in DA and EDP approvals to ensure obligations with respect to management of MNES during construction are implemented.	Ongoing.
13	Collection of baseline ecological information for all new reserve areas.	PIT	Baseline information was collated and used to inform the Habitat/Condition Improvement Plans and Offset Management Plans	Complete.
14	Ongoing collection of key ecological information for monitoring and reporting requirements.	EPSDD	<u>Golden Sun Moth</u> Results of the 2019-20 GSM studies will be published online on the <a href="#">EPSDD website</a> for Environmental Offsets and the ACT Government Offsets Register by the end of 2020.  GSM habitat condition monitoring was undertaken at all offset sites by the ACT Government in 2018 and 2019, and this monitoring will be continuing in 2020. Monitoring of GSM populations was undertaken by ACT Government in 2018 and 2019 flying seasons (October-December) at Kinlyside, Throsby North and Throsby East, and this monitoring will be continued in 2020. This is the last year of baseline data collection for all monitoring sites, and future results will be compared to this baseline to determine any ecological changes brought on by management actions or variability in climatic conditions.  Kinlyside and Throsby North have been monitored for GSM population since 2015, while Throsby East has only been monitored since 2018 (as part of the 3-year baseline data collection). Preliminary results show that at Throsby North, GSM has increased in distribution and abundance by 20% per year since 2015, with the highest numbers recorded in 2019. There is no clear trend at Kinlyside, with fluctuations in numbers recorded each year since 2015. However, Kinlyside is the only site that showed a decrease from 2018 to 2019. Over the 2 years of GSM population monitoring at Throsby East, an increase in numbers was observed. Comprehensive results will be published in the Environmental Offsets Ecological Monitoring Program Reports.	Ongoing.  GSM population monitoring (all offsets) during breeding season 2019-20 and planned for 2020-21 breeding season.  GSM habitat condition monitoring (all offsets) completed in 2019-20 and continuing 2020-21.

Item	Commitment	Responsibility (from 1 July 2018)	Comment	Timing and Date
			<p><u>Superb Parrot</u>            Superb parrot breeding was monitored at the Throsby East and North offset sites by the ACT Government in Spring 2019.</p> <p>Fifteen (15) superb parrot nests were located on the Throsby East offset site. In total, superb parrots raised 53 young on the Throsby offset site in 2019. This represents a marginal increase in breeding output compared to baseline (2015).</p> <p>Annual reports will be published on the EPSDD offsets website.</p> <p>Superb parrot monitoring completed:</p> <ul style="list-style-type: none"> <li>• Sep 2015 – Feb 2016</li> <li>• Sep 2016 – Feb 2017</li> <li>• Sep 2017 – Feb 2018</li> <li>• Sep 2018 – Feb 2019</li> <li>• Sep 2019 – Feb 2020</li> </ul>	<p>Superb parrot monitoring to continue in Spring 2020.</p>

Item	Commitment	Responsibility (from 1 July 2018)	Comment	Timing and Date
			<p><u>Box Gum Woodland</u> Results of the 2019-20 BGW studies will be published online on the <a href="#">EPSDD website</a> for Environmental Offsets and the ACT Government Offsets Register by the end of 2020</p> <p>Box Gum woodland condition, floristics and understorey structure was monitored across the GSA offset sites (Horse park North, Kenny, Kenny Broadacre, Kinlyside, Taylor, Throsby East and North) by the ACT Government during the 2018-19 and 2019-20 field seasons. This is the last year of baseline data collection, and future results will be compared to this baseline to determine any ecological changes brought on by management actions or variability in climatic conditions.</p> <p>Preliminary results show that in 2018, the native plant species richness on average fell below the benchmark of 35 and Floristic Value Score was below benchmark for all sites. However, EPBC BGW mapped areas met the benchmark of above 50% native ground cover. All GSA sites were below benchmark for coarse woody debris, with the exception of Kenny. All GSA sites were also below the benchmark for the number of mature trees; Kenny recorded the highest number of mature trees, however this was still below benchmark.</p> <p>Weeds are a threat at all sites, in particular Serrated Tussock in EPBC BGW at Horse Park North, Kenny, Taylor and Throsby North, and St John's Wort in Horse Park North, Kinlyside, Taylor and Throsby North.</p> <p>In terms of woodland condition overall, our preliminary results show that across the GSA sites, Horse Park North appears to be the best quality site, followed by Taylor and Kinlyside. Comprehensive results will be published in the Environmental Offsets Ecological Monitoring Program Reports.</p>	<p>BGW condition monitoring was undertaken in 2019-20. No plans to do 2020-21 monitoring</p>
			<p><u>Pink-tailed Worm-lizard</u> The PTWL is not a MNES with commitment targets in the Plan. Notwithstanding, data is being collected on the habitat of this species to inform land management planning and operations. The extent of potential low, moderate and high quality PTWL habitat was mapped within Kinlyside in November 2016. 25 ha of potential moderate and high quality PTWL habitat was described. Remapping of PTWL habitat will take place in 2024. Population monitoring will not take place until a less invasive method is established. Results of this study may be published on the EPSDD website.</p>	<p>Remapping for PTWL is scheduled for 2024, in line with the <i>Managed MNES Ecological Monitoring and Research Plan</i>.</p>

Item	Commitment	Responsibility (from 1 July 2018)	Comment	Timing and Date
15	<p>Any action that results in a breach of commitments of the Plan and adversely affects MNES values will be investigated and reported to DoE with identified recommendations for rectification, remediation or additional compensation.</p> <p>Remedial actions or additional compensation will be undertaken for controllable or avoidable actions which lead to a decline in MNES values with respect to the stated outcomes of the Plan.</p>	PIT	<p>In response to the Audit Report and internal review, a new procedure was implemented. In 2019-20 the procedure was being updated to reflect lessons learnt and to ensure practical outcomes. It sets responsibilities and timeframes for reporting, investigations and communication with relevant GSA stakeholders and the Commonwealth.</p> <p>No GSA breach incidents were reported for 2019-2020. Monitoring in recent years at Kinlyside and Kenny indicates potential long-term decline of MNES habitat (Box gum woodland, golden sun moth habitat, striped legless lizard population). At the time of this report a letter outlining investigations into the potential decline had been sent to DAWE advising of factors contributing to potential long-term decline and the Territory's management strategy to address this issue.</p>	Ongoing. Breaches will be investigated and GSA stakeholders (DAWE, PIT, EPSDD) notified according to agreed timeframes.
16	Prepare and submit Annual Reports (n=20). Highlighting the implementation of the actions and relevant conservation outcomes for MNES. All reports, in addition to any research related to the Plan will be published on the internet in a central location.	PIT	2019-20 annual report submitted to Commonwealth.	Ongoing. Every financial year (within 2 months of the end of the financial year). 31 August each year until 2033.
17	Prepare and submit Plan Review Report (n=5). The final Plan Review Report will include a summarised synthesis of all knowledge gained over the life of the Plan in order that it represent a complete description of actions taken under the Plan, requirements for ongoing management and opportunities for future enhancement beyond the life of the Plan.	PIT	<p>Plan Review Report is a recurring commitment item due every four years. Plan Review Report was last prepared September 2018.</p> <p>This commitment item is not applicable for 2019-20 period.</p>	<p>Every fourth year from endorsement of the Plan (within 6 months of the end of financial year) until 30 August 2033.</p> <p>The next Plan Review Report is due in August 2022, thereafter every four years until 2033.</p>
18	Engage a third party (outside of the PIT membership or working group) to undertake an annual audit of financial management under the Plan. Findings of the audit are to be included in the annual report.	PIT	Undertaken by EPSDD Strategic Finance, coincides with 2019-20 annual reporting.	31 August each year until 2033.
19	Engage a third party to undertake an Independent Audit of the Plan's implementation (n=4).	PIT	<p>Independent Audit is a recurring commitment item due every five years. Independent Audit of the Gungahlin Strategic Assessment was last prepared by the Office of the Commissioner for Sustainability and the Environment in November 2017.</p> <p>This commitment item is not applicable for 2019-20 period.</p>	The next audit is due August 2022, thereafter every five years until 2033.
20	Creation of new nature reserves in Kinlyside, Gorooyarroo and Mulligans Flat.	EPSDD	This has been completed through a Territory Plan variation.	Complete. The variation to the Territory Plan has been completed. See NI2014-501
21	Creation of nature reserve in Kenny.	EPSDD	This will be undertaken prior to the commencement of construction in Kenny.	<p>Not yet commenced. Will occur prior to the commencement of construction in Kenny.</p> <p>Establishment of the reserve is expected to occur during the coming year (2020-21) as development of Kenny is expected in early 2021-22.</p>

Item	Commitment	Responsibility (from 1 July 2018)	Comment	Timing and Date
22	Commence management of a nature reserve in Kenny (160 hectares). Created by the excision of rural Block 775 Gungahlin from future development potential.	EPSDD	<p>See also Commitment Item 21 above.</p> <p>It is noted that the cadastre block identifier has changed to Block 820 Gungahlin.</p> <p>A management plan for the Kennynature reserve will be written (within 6 months of nature reserve establishment) to guide ongoing management of the reserve prior to construction commencing in Kenny.</p> <p>Land management activities conducted during 2019-20 financial year by the Parks and Conservation Service while the site was managed by a rural lessee included weed control (invasive grasses including Serrated Tussock) and improvements to fences.</p> <p>Monitoring of Striped Legless Lizard and woodland birds occurred in the 2018-19 and 2019-20 financial years. Floristics, understorey structure and woodland attributes were also surveyed in the 2018-19 and 2019-20 financial years. Monitoring will be reported in the Environmental Offsets Monitoring Reports published online in 2020. Monitoring reports containing sensitive information will not be published but will be made accessible to relevant stakeholders.</p>	As above. Management as a formal nature reserve will commence prior to commencement of construction in Kenny. Construction is expected to commence in early 2021-22.
23	Commence management of a nature reserve in Kinlyside (201 hectares) from the current extent of land in the RZ1 – Suburban zone under the Territory Plan in the location known as Kinlyside.	EPSDD	<p>The nature reserve exceeds the stated 201 ha. The nature reserve is approximately 226 ha and the total area managed as an offset is 290 ha.</p> <p>The area is managed in accordance with the Kinlyside Offset Management Plan. This included negotiation of a services agreement with the existing leaseholder.</p>	Complete. Management of Kinlyside Nature Reserve and offset area commenced in July 2015.
24	Commence management of additional 300 hectares to the Mulligan's Flat – Goorooyaroo nature reserve complex. Land to be excised from the future urban area of Throsby and the 'Kenny broad acre' area and managed for the protection of MNES.	EPSDD	<p>Management of the extended Mulligans Flat and Goorooyaroo nature reserves commenced in July 2015. These areas are currently managed in accordance with the Canberra Nature Park Plan of Management 1999 (currently under review) and the Mulligans Flat and Goorooyaroo Reserves Offset Management Plan.</p>	Complete. Management commenced in July 2015.
25	Commence management of additional 120 hectares to the north-western Hills, Ridges and Buffers zone from the urban areas of Taylor and Jacka in addition to the entire area of the north Horse Park broad acre area.	EPSDD	<p>These sites have been under active PCS management since 2016-17 and will be the subject of ongoing management into the future.</p> <p>Examples of 2019-20 activity:</p> <ul style="list-style-type: none"> <li>• Weed control- serrated tussock control, woody weed, thistle and broadleaf weed control across Jacka, Taylor and Horse Park North areas.</li> <li>• Erosion control and restoration works in Horse Park North avoidance area.</li> <li>• Restoration works (tree, shrub and grass planting) in Taylor avoidance area.</li> </ul> <p>Maintenance (priority water carting) of previous plantings Taylor and Horse Park North during prolonged dry period over 2019-20.</p>	Complete. Management commenced 2016-17

Item	Commitment	Responsibility (from 1 July 2018)	Comment	Timing and Date
26	<b>Improvement in the under-storey diversity</b> of 104 hectares of box gum woodlands that presently do not meet the definition of the listed community. Areas subject to this action will include those that are presently in nature reserves in addition to areas that will become nature reserve as a result of implementing the Plan.	EPSDD in consultation with the PIT	<p>This is described in the relevant <a href="#">Habitat Improvement Plan</a> and is required to be completed within 20 years of endorsement of the Plan.</p> <p>Updated BGW mapping undertaken across GSA offset sites in 2017 continues to inform MNES improvement planning and baseline for future activities. Restoration zone map and spatial tool with site specific attributes has been delivered by the offsets planning and monitoring teams. These tools have assisted in informing targeted operational planning and implementation to maintain or improve BGW under-storey towards meeting definition of listed community. This will help achieve restoration in BGW understorey diversity by more accurately reflecting the baseline from which habitat improvement and restoration plans can be established, implemented and evaluated.</p> <p>Heavy duty tree guards have been placed around individual naturally regenerating native eucalypt to protect from grazing pressure. This action has been guided by identified restoration zone map.</p> <p>Follow-up vegetation monitoring of offset sites was undertaken in spring 2019.</p>	<p>Ongoing.</p> <p>Follow-up vegetation monitoring of offset sites will be undertaken again in spring 2020. This information will be published online on the Offsets Register in the Environmental Offsets Monitoring reports, which will be published online by the end of 2020.</p> <p>Use of updated BGW mapping to inform improvement activities will continue into 2020-21 and 2021-22.</p>
27	Habitat improvement plans for: <ul style="list-style-type: none"> <li>• box gum woodland (approx. 104 hectares of habitat)</li> <li>• golden sun moth (up to 140 hectares of habitat)</li> <li>• striped legless lizard (up to 111 hectares of habitat)</li> <li>• superb parrot</li> </ul>	EPSDD	All habitat improvement plans are completed.	Complete.
28	Fire hazard management strategies that include specific considerations for: <ul style="list-style-type: none"> <li>• box gum woodland</li> <li>• golden sun moth</li> <li>• striped legless lizard</li> <li>• superb parrot</li> </ul>	EPSDD	<p>These are being developed for each reserve as ecological considerations are provided in the Strategic Bushfire Management Plan (ACT Gov).</p> <p>Specific bushfire management and mitigation measures are also outlined in the Regional Fire Management Plan which is being revised for 2019-2024 in consideration of the impacts of the Orroral Valley Bushfire. This includes a review of the Fire Management Zones in the Taylor 3 approval development process, which is determined by ACT Emergency Services Agency.</p> <p>Annual bushfire work programs are outlined in the yearly-prepared Bushfire Operations Plans (BOPs) and these are published online along with the Regional Fire Management Plan and Fire Management Zones on ACTmapl.</p>	Ongoing. The Fire Management Strategy for Taylor 3 is the most recent submitted.

Item	Commitment	Responsibility (from 1 July 2018)	Comment	Timing and Date
29	Protect known superb parrot nesting trees including exclusion fencing of the interface between Throsby East Reserve and the future urban area to limit pedestrian access points.	EPSDD	<p>The Throsby EDP was approved in April 2016 including exclusion fencing to ensure that development activity did not impact on superb parrot nesting trees.</p> <p>A concept plan for the extended Mulligans Flat Sanctuary considers access, interpretation, education and recreation opportunities that are consistent with managing the values of MNES.</p> <p>The 12km Predator Proof Fence (PPF) for the Throsby boundary was constructed in 2018 with final completion of the fence in January 2019. All known superb parrot nest trees are protected within the Throsby East reserve.</p> <p>The Goorooyarroo section of PPF was constructed in 2018 and completed in 2019.</p> <p>The extended sanctuary predator proof fence design takes into consideration of restricted pedestrian access points on the urban interface.</p> <p>Construction of the Mulligans Flat Ecotourism Centre started June 2019 and continues (Commonwealth Government funded).</p>	<p>Complete (exclusion fence).</p> <p>Ongoing monitoring of superb parrot nesting trees will be reported at Commitment Item 14 in future annual reports.</p> <p>Monitoring for the superb parrot was completed in this area. Superb parrots were first detected at Throsby East on 21/09/2017. Bird surveys (monitoring) started on 27/09/2017. There was no indication that PPF construction impacted superb parrot breeding.</p>
30	<p>Establish educational resources including signage and guidelines for residents of east Throsby, including:</p> <ul style="list-style-type: none"> <li>• Description of ecological values and significance of the Mulligan's Flat – Goorooyarroo nature reserve complex;</li> <li>• No domestic animals in reserves;</li> <li>• Management of pest species along the urban edge.</li> </ul>	EPSDD	<p>Interpretation signs have been installed along the extended fence with educational information on the natural and cultural history, and ecological values of the area – these are on 3 different walks that go through the offset areas. There are also signs that advise the public not to enter the areas during the Superb Parrot breeding seasons</p>	Complete

Item	Commitment	Responsibility (from 1 July 2018)	Comment	Timing and Date
31	<p>Commence planning for implementation of focused research on superb parrot habitat requirements:</p> <ul style="list-style-type: none"> <li>Research focusing on nest site selection, nest site fidelity, fecundity, population dynamics and methods of reducing or eliminating nest hollow competition from aggressive native species or exotic pests such as common myna and European honeybee.</li> <li>Assisted natural regeneration to facilitate future hollow formation will be undertaken in areas likely to be suitable as future nesting sites.</li> <li>Removal of stock leading to a reduction in localised compaction and concentration of nutrients, improving long term tree survival.</li> </ul>	ESDD	<p>Superb parrot numbers, breeding behaviour, nesting attempts and productivity are monitored at Throsby East and central Molonglo Valley. Analysis has commenced to compare nest survival and reproductive success across the two superb parrot breeding colonies.</p> <p>High nesting success displayed by superb parrots suggests that nest competition from other hollow-using fauna is not a threat that requires management intervention at this time. Ground-based bird surveys have been undertaken at the breeding area since 2017, and results will be analysed to assess change in competitor abundances. Competitor abundances and superb parrot nesting success should continue to be monitored annually at Throsby East.</p> <p>Detailed tree hollow data have been collected at Throsby East offset site and central Molonglo Valley, and analysed to characterise superb parrot nest preferences, and assess local-scale nest hollow availability. Preliminary results indicate availability of suitable superb parrot nest hollows is very low.</p> <p>Images from camera traps located at active superb parrot nests are collected and analysed through the online citizen science platform Digivol, and this work is ongoing. Evidence of egg destruction by Starlings, and predation of chicks by Brown Goshawk and probably Kookaburra, were collected.</p> <p>Species Distribution Models have been built for the superb parrot based on research outcomes (monitoring and tracking data) and these models will be used for strategic planning of habitat improvement, including assisted natural regeneration, for the species.</p> <p>Grazing stock is being managed to prevent compaction and concentration of nutrients under nesting trees.</p> <p>Birds continue to breed successfully and raise chicks at pre-development levels.</p> <p>Research into superb parrot habitat selection, resource use and nest hollow competition continues.</p>	<p>Ongoing.</p> <p>2013-14: 20 June 2014</p> <p>2014-15: Planning / Underway</p> <p>2015-16: Research objectives met</p> <p>2016-17: Research objectives met</p> <p>2017-18: Research objectives met</p> <p>2018-19: Research objectives met</p> <p>2019-20: Research objectives met</p> <p>2020-21: Research to continue</p> <p><a href="#">2015</a> and <a href="#">2016</a> monitoring reports are published on the <a href="#">Environmental Offsets Website</a></p> <p>2017, 2018 and 2019 monitoring reports for this item will be published in the 2020-21 financial year.</p> <p>Research Evaluation Report to be drafted within the 2021-22 financial year.</p>
32	<p>Research golden sun moth habitat requirements:</p> <ul style="list-style-type: none"> <li>may include research into translocation of golden sun moths</li> <li>fragmentation and proximity to urban areas</li> </ul>	EPSDD	<p>Addressed in the <a href="#">Habitat Improvement Plan</a> for this MNES.</p> <p>A copy of the final report based on research to date will be published online within the 2020-21 financial year.</p>	Ongoing.
33	Undertake control programs of ruderal species.	EPSDD	<p>PCS have engaged the services of the Canberra Indian Myna Action Group to assist with monitoring and management of Indian Myna's.</p> <p>High nesting success displayed by superb parrots suggests that nest competition from other hollow-using fauna is not a threat that requires management intervention at this time. Competitor abundances and superb parrot nesting success should continue to be monitored at the sites. Please refer to commitment item 31 for details.</p>	Ongoing.

Item	Commitment	Responsibility (from 1 July 2018)	Comment	Timing and Date
34	Undertake salvage and relocation of structural habitat elements such as rocks and logs.	Contractors	Woody debris placement in BGW and tree snag relocation was completed in the past years. Due to drought, extended and severe bushfire season, extreme storm activity and COVID 19 shutdown delivery of planned programs has been interrupted. Dam enhancement has been a focus for restoration partly due to retained soil moisture at some sites. Rocks and coarse woody debris have been placed in and at four dams to improve habitat, particularly for frogs. Woody debris is monitored in woodland plots and will be reported in the Environmental Offsets Monitoring Report to be published online by the end of 2020.	Ongoing.
35	Undertake plantings to improve connectivity and wildlife movement along Gungahlerra and Sullivan's creeks, targeting in particular superb parrot movement corridors.	EPSDD	Approximately 6000 plantings (tree, shrubs and plant) were undertaken in 2017 to enhance connectivity and wildlife movement. Trees are growing well. Maintaining plantings from 2017 was the primary focus of restoration efforts during 2019-20 due to severe dry conditions (water cart & maintaining guards). The restoration work focus was on dam enhancement in Throsby North. This project included woodland shrub plantings. Severe dry conditions limited restoration planting elsewhere. Four dams have been targeted for enhancement.	Ongoing.
36	Undertake all bushfire management activities in line with ACT Government's Ecological Guidelines for Fuel and Fire Management Operations.	EPSDD	As required.	Ongoing.
37	The formula for funding set out in Table 5.3 over the 20-year life of the Plan will be implemented.	PIT	The formula for funding was implemented upon endorsement of the Plan and approval of the class of actions permitting urban development of Gungahlin.	Ongoing.
38	Review the funding arrangements to ensure the Plan commitments are being met in the event of total expenditure variations of more than 5 per cent over the 20-year period (+/- \$1.325 million).	PIT	As part of the Plan Review Report process. Plan Review Report is a recurring commitment item due every four years. Plan Review Report was last prepared September 2018. This commitment item is not applicable for 2019-20 period.	Every fourth year from endorsement of the Plan (within 6 months of the end of financial year) until 30 August 2033.  Next Plan Review Report due August 2022.

## ***Independent Audit***

The Commissioner for Sustainability and the Environment completed the first independent audit of the Gungahlin Strategic Assessment NES Plan in November 2017.

The audit found that the majority of the commitments, a total of 19 (five with observations), were compliant. A total of 13 commitments were not compliant, five of which were identified as high risk.

Areas of non-compliance resulted largely from delays in timely delivery and implementation of the commitments across government agencies. Five corrective actions were issued for high risk items to ensure commitments are met.

All of the corrective actions have been completed. EPSDD continues to work with relevant entities on improvements to the strategic assessment process and recording procedures as recommended by the independent audit and the Plan Review Report.

The next Independent Audit is due August 2022.

## ***Plan Review Report***

The Plan requires a Plan Review Report (the Report) to be prepared every four years from endorsement of the Plan. The Gungahlin Plan Review Report was completed in September 2018.

The Report provides findings on actions undertaken, improvements to MNES, legislation and policy changes, and knowledge gained from June 2013 to June 2018. The Report also considers issues and challenges that have arisen and opportunities for improvements to deliver the Plan.

This was the first Report over the 20-year timeframe of the GSA. There was limited information available to comment on all commitments when the first Report was prepared. It is anticipated that as the GSA progresses and more information on the delivery of commitments becomes available this information will be captured in future Plan Review Reports.

The Report concludes with a number of recommendations for improving the delivery of commitments in the future, and the ACT Government will continue to work with the Commonwealth Government to deliver these recommendations.

The next Plan Review Report is due August 2022.

## ***Financial Reporting***

The majority of work during the 2019-20 financial year has been undertaken by ACT Government employees as a direct allocation through three ACT Government budget initiatives - 'Enhancing the Protection of Endangered Species and Habitat' (2015-16); 'Caring for our environment – Improving species and habitat protection' (2016-17); and 'Protecting grassland and conservation areas' (2019-20). These initiatives have committed funding for the continued management of MNES in Throsby North, Throsby East, Kenny Broadacre, Kinlyside Nature Reserve and the Kenny future offset.

Funding amounts provided in Table 3 (below) include capital and recurrent expenditure over the 2019-20 financial year. Under current financial tracking processes, capital expenditure is recorded by site while recurrent expenditure is not. As such, recurrent expenditure has been allocated to each site on a per hectare basis. Expenditure per site therefore reflects not only site-specific costs but the general costs of running offset sites across the GSA (for example, costs such as vehicle and machinery leases, equipment, uniforms).

Any differences between the funding spent and amounts estimated in the plan is due to changes in land management requirements and identified cost savings. Overall, funding secured within the ACT Budget to manage the offsets over 20 years is greater than the amount estimated in the Plan. The amount secured provides assurance that the ACT Government is committed to delivering on the commitments in the Plan. Table 3 provides a comparison of the original estimated expenditure for the offset sites in the GSA Biodiversity Plan compared to the funding spent. A brief explanation of the difference in the figure or how the money was primarily spent is provided.

The annual report notes discrepancy between the Financial Reporting (see table 3) section and the Financial Audit (see table 4) section which was provided separately by EPSDD Strategic Finance. The variation in figures is because recurrent expenditure is not fully accounted for in Table 4. Recurrent expenditure is allocated broadly in PCS operational budgets and is not associated with cost codes specific to GSA operational activities. PCS have since reviewed cost codes and communications with Strategic Finance to improve reporting accuracy to improve accounting for recurrent expenditure. A meeting is planned in September 2020 with stakeholders (PCS, Strategic Finance, Impact Assessment) to workshop an assurance pathway to confirm improvement in finance reporting/auditing accuracy, such as trialling an initial quarterly assessment of reporting accuracy.

**Table 3 Comparison of estimated expenditure between the Plan and 2019-20 expenditure**

Offset Sites	Estimated expenditure in the Plan for 2019-20	Funding spent in 2019-20	Comments
<b>Direct Offsets</b>			
Mulligans/ Goorooyarroo offset sites (incorporating Kenny Broadacre, Throsby North and Throsby East)	\$296,850	\$216,804.40	The original budget included costs to undertake works that are no longer required. This included large amounts estimated for Throsby East to rehabilitate potentially contaminated land. Subsequent investigations determined that this was not needed.
Kinlyside	\$0	\$135,983.10	The original budget in the Plan assumed that land management costs for Kinlyside would be able to be met by the rural leaseholders. The ACT Government has recognised that additional funding and land management activities by PCS are required to aid the rural leaseholders in maintaining the MNES values on the land to meet delivery of GSA Plan commitments. This includes activities required to deliver on the commitments within the Plan and approved Habitat Improvement Plans, as well as other works to improve site condition (e.g. gully erosion abatement).  This approach is consistent with the <a href="#">ACT Environmental Offsets Policy</a> and the <a href="#">ACT Environmental Offsets Policy Delivery Framework</a> .
Jacka, Taylor and Horse Park north	\$204,000	\$292,070.20	The associated development was not commenced until 2016. Funding was secured in the 2016-17 budget bid. The funding received and spent differs from the figure in the Plan due to changes (increased) to land management requirements.

Offset Sites	Estimated expenditure in the Plan for 2019-20	Funding spent in 2019-20	Comments
Kenny	\$0	\$183,602	<p>The associated development has not commenced, and the reserve has not been established. Estimated expenditure is linked to reserve establishment, as such no funding was technically required in the 19-20 financial year.</p> <p>However, the ACT Government has provided some preliminary funding for Kenny in recognition of the need to help the current leaseholder reduce on-site threats to the MNES values and provide stronger interim management of this future offset site.</p>
Staff	\$470,640	\$1,140,621.30	This is for on-ground staff, as well as the additional staff required to enable effective management of avoided and offset areas, for example administration, coordination, planning, research and monitoring of the offsets program. The estimated expenditure from the plan only included an estimated amount for on-ground staff.
<b>Indirect Offsets</b>			
Research	\$100,000	\$20,160	Research funding for 2019-2020 has been expended on intensive research into Superb Parrot breeding and habitat use to meet Plan commitments – see commitment items for details. Differences in amount spent and original estimates are due to no other research projects being active in this financial year and funds being spent only when necessary. Future research projects are being developed to meet relevant commitments. Funds will be allocated as necessary.

## ***Financial audit***

A financial audit was prepared by EPSDD Finance for expenditure in 2019-2020. Summarised findings of the audit are included below in Table 4. Detailed expenditure is provided in Table 3, above.

**Table 4: financial audit summary**

<b>Throsby</b>	
Weeds	\$19,156.36
Revegetation	\$9,069.25
Signage, heritage trail design, installation	\$47,365.00
Consumables	\$131.59
<b>Total</b>	<b>\$75,722.20</b>

<b>Kinlyside</b>	
Track works	\$2,885.45
<b>Total</b>	<b>\$2,885.45</b>

<b>Jacka, Taylor and Horse Park North</b>	
Track works	\$16,400.00
Revegetation	\$15,162.05
Tools, equipment	\$19.73
Fencing	\$7,517.82
Weed control	\$25,963.23
<b>Total</b>	<b>\$65,062.83</b>

<b>Kenny</b>	
Weed control	\$45,078.48
Fencing	\$50,722.50
<b>Total</b>	<b>\$95,800.98</b>

## ***Projected 2020-21 Expenditure***

Expenditure for 2020-21 will focus on continuing to deliver the relevant management actions previously identified in the individual offset management plans.

Projected expenditure includes but is not limited to the following activities.

- Establish the Kenny Nature Reserve and commence management (Commitment 21, 22)
- Land management actions to be delivered in conjunction with leaseholders at Kenny and Kinlyside (Commitments 9 and 23).
- Planning and commencement of targeted box gum woodlands restoration works (Commitment 26).
- Ongoing operational programs such as invasive weed and animal control (Commitments 24 and 25).
- Continue to deliver on the superb parrot and golden sun moth research projects (Commitment 31, 32).
- Continue to deliver the MNES monitoring program (Commitment 14).

## ***Future Funding***

It is important to recognise that the ACT Budget for 2020-21FY is delayed and expected to be handed down after October 2020<sup>2</sup>. The collective decision of all Australian Governments was to defer delivery of 2020-21FY budgets because of the unprecedented impacts of the COVID-19 pandemic upon the economy and necessary national and jurisdictional responses. In comparison, the previous ACT Budget was handed down on 4 June 2019, allowing greater reporting certainty about future funding in the previous annual report.

Gungahlin Strategic Assessment (GSA) funding includes a recurrent budget, which provides on-going funding from year five (2017-18FY) and beyond. The recurrent (on-going) funding for GSA sites is estimated, based on previous reporting periods, at \$1.4M per annum. The total amount may vary depending on annual land management and restoration requirements, and possibly from potential unprecedented budget impacts from COVID-19 in the yet to be released 2020-21 ACT budget.

Currently, the GSA offset sites are funded by three separate business cases, which also include funds to manage other PCS managed offset sites. The total amount of recurrent funds secured within these business cases is estimated at \$3.017M per annum. The total amount of capital funds secured within these business cases for the 2020-21 FY is \$741,000, of which it is estimated \$130-\$170K will fund capital expenditure in GSA offset sites in the 2020-21 FY.

While the current level of on-going recurrent funding is expected to continue to be provided to manage GSA sites, further capital and recurrent funding is being sought to secure funds to manage the Kenny offset site.

With these funds and the expected funding to manage the Kenny offset site in the future, the ACT Government is committed to fulfil commitments of the Plan.

---

<sup>2</sup> Andrew Barr MLA. 18 June 2020. Ministerial Response to COVID-19. Ministerial Statement. [https://aops.treasury.act.gov.au/\\_data/assets/pdf\\_file/0007/1561444/ministerial-statement-on-recovery-plan.pdf](https://aops.treasury.act.gov.au/_data/assets/pdf_file/0007/1561444/ministerial-statement-on-recovery-plan.pdf)

## Areas of Non-Compliance

There were no non-compliance events reported during 2019-20. Dialogue was maintained with the Commonwealth about several isolated potential breaches of the Plan which, when investigated further, were deemed compliant with the Plan.

Potential long-term decline of MNES has been monitored for several years in Kenny and Kinlyside, including the 2019-20 reporting period. See table 5 for a summary of these issues. Shortly after the reporting period an investigation report was prepared for the Commonwealth to meet reporting requirements of commitment item 15. The report described condition of MNES over time, the influence of long-term drought, current land use practices and a management plan to encourage improvement in condition of MNES.

**Table 5: potential long-term decline**

Item	Potential non-compliance matter	Comment
<p>Commitment 15</p> <p>Any action that results in a breach of commitments of the Plan and adversely affects MNES values will be investigated and reported to DAWE with identified recommendations for rectification, remediation or additional compensation.</p> <p>Remedial actions or additional compensation will be undertaken for controllable or avoidable actions which lead to a decline in MNES values with respect to the stated outcomes of the Plan.</p>	<p>Long term decline in MNES values</p> <ul style="list-style-type: none"> <li>• Kinlyside Nature Reserve (box gum woodland and golden sun moth habitat)</li> <li>• Kenny future nature reserve (striped legless lizard and box gum woodland)</li> </ul>	<p>Investigation report letter sent to DAWE in August 2020.</p> <p>Monitoring program assessed condition of MNES over recent years and potential factors (e.g. prolonged drought, stocking from rural leases) that influence condition. Results from monitoring are used as baseline MNES condition to inform change over time and management plan.</p> <p>A management strategy is in place (grazer management, weed control and pest management, targeted restoration activities, translocation and management plan) to encourage stabilisation and/or improvement of condition of MNES.</p>