

ACT Office of the Surveyor-General Update

February 2026



ACT
Government

Office of the Surveyor-General

Contents

1. [Survey Practice Advisory Committee](#)
2. [Associate Surveyors](#)
3. [Engineering Surveyors](#)
4. [Pathway to Registration in Victoria](#)
5. [OSGLI Supervision Audit](#)
6. [OSGLI Examination Update](#)
7. [OSGLI Land Information Team – LiDAR, 1 Stop Shop and Aerial Imagery](#)
8. [Datum Ground Level Update – Supreme Court Case outcomes](#)
9. [Control Surveys – Update](#)
10. [ACT Happenings](#)
11. [Feedback](#)



Survey Practice Advisory Committee – SPAC

- In the August 2025 OSGLI update, it was announced 2 of the SPAC members Mike Stapleton and Steve Beljanski had resigned from SPAC in July. Following the liquidation of the Geospatial Council of Australia (GCA) the remaining professional entity representative Jason Steger resigned.
- I would like to thank Steve Beljanski, Mike Stapleton and Jason Steger for their contributions to the committee prior to their resignations.
- As a result, only 3 members remain on SPAC. These are Greg Ledwidge (OSGLI), the Chair, Joanne Hawkes (OSGLI), and Sean Quinn – (Land Titles).
- It is requirement of the *Surveyors Act 2007* that SPAC have a minimum of five 5 members. Therefore, we must recruit new members to the committee.
- Given the current SPAC appointments expire on 31 October 2026, it is impractical to appoint replacement members for a short period of time of less than 5 months. Therefore, we will recruit and appoint a new committee, for a full term of 3 years, as soon as possible.

[Return to contents](#)



ACT
Government

Office of the Surveyor-General

Survey Practice Advisory Committee – SPAC

- The Surveyors Act 2007 requires SPAC be comprised of:
 - The Surveyor-General as chair
 - At least 3 registered surveyors, 2 of which must be professional entity representatives. Given GCA has been liquidated, ISNSW is a logical choice as the appropriate professional entity.
 - At least 1 non-registered surveyor
- This is an opportunity to broaden membership of SPAC to include not only the 3 registered surveyor members but up to 3 people who are not registered surveyors. Such people may be:
 - Associate Surveyors,
 - From the Surveying/Spatial industry, or
 - From other professional groups such as lawyers, planners, architects or builders

[Return to contents](#)

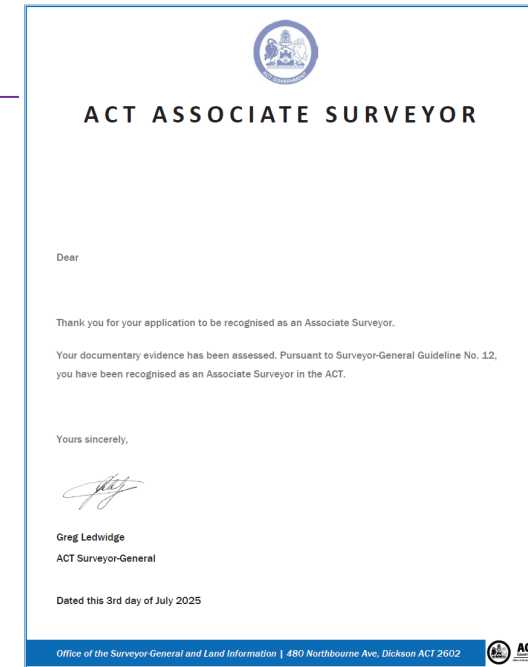
Survey Practice Advisory Committee – SPAC

- OSGLI is currently working to start the recruitment process in the coming month or two, once internal review processes are complete.
- At that time OSGLI will:
 - Publish the membership position descriptions and selection criteria, and
 - Call for Expressions of Interest from the professional entity and interested people.
- Expressions of interest will need to be less than 2 pages and address the published selection criteria.
- In the interim the OSGLI will continue to seek advice from the profession and industry via the OSGLI Updates, polling and direct email engagement with surveyors.

[Return to contents](#)

Associate Surveyors

- There are now 55 Associate Surveyors in the ACT and growing.
- In 2025 the OSGLI hosted 2 events for Associate Surveyors in May and September and sent out a poll regarding career development and training.
 - In May, important concerns were discussed regarding the co-signing of plans by Associate Surveyors and any resultant liability. The advice from Paul Mather of ACSIS insurance is that it would make no difference. At least one Associate Surveyor continues to co-sign Deposited Plans. Note, co-signing is still optional.
 - In September, a range of issues were covered including education and training, ACTmapi including the 1 stop shop, the updated Control Survey Guideline 2, and importantly a conversation with Mitch Hanlon the ISNSW President about being part of a profession.
 - A poll was sent, in November, to all Associate Surveyors to get their opinions about future training and their career development needs. 12 Associate surveyors responded. The questions and responses are on the following slides.



[Return to contents](#)

Associate Surveyors - The Poll

Question: How beneficial would the following training areas be for your future career aspirations?

- The top ranked 7 topics were
 - **Survey law**
 - **Compliance surveys**
 - **Rural boundary surveys**
 - **Boundary system**
 - **Survey control for cadastral surveys**
 - **Equipment calibration**
 - **Urban boundary surveys**
- Future training will focus on these topics.

	Boundary system	Survey control (for cadastral surveys)	Calibration of equipment	Survey Law	Using UAVs for Lidar and photogrammetry (for cadastral surveys)	Terrestrial Laser Scanning (for cadastral surveys)	Urban Boundary Surveys	Unit Title Surveys	Rural Boundary survey (NSW/ACT)	Detail Surveys/Datum Ground Level	Compliance Survey
	Extremely beneficial	Extremely beneficial	Extremely beneficial	Extremely beneficial	Not beneficial	Not beneficial	No response	Extremely beneficial	Extremely beneficial	Extremely beneficial	Extremely beneficial
	Not beneficial	Not beneficial	Not beneficial	Not beneficial	Not beneficial	Not beneficial	Not beneficial	Not beneficial	Not beneficial	Not beneficial	Not beneficial
	Slightly beneficial	Slightly beneficial	Moderately beneficial	Extremely beneficial	Extremely beneficial	Extremely beneficial	Slightly beneficial	Slightly beneficial	Extremely beneficial	Extremely beneficial	Extremely beneficial
	Extremely beneficial	Extremely beneficial	Extremely beneficial	Extremely beneficial	Extremely beneficial	Extremely beneficial	Extremely beneficial	Extremely beneficial	Extremely beneficial	Extremely beneficial	Extremely beneficial
	Extremely beneficial	Extremely beneficial	Very beneficial	Very beneficial	Very beneficial	Very beneficial	Very beneficial	Moderately beneficial	Extremely beneficial	Moderately beneficial	Very beneficial
	Very beneficial	Moderately beneficial	Very beneficial	Slightly beneficial	Slightly beneficial	Not beneficial	Moderately beneficial	Moderately beneficial	Slightly beneficial	Very beneficial	Very beneficial
	Moderately beneficial	Moderately beneficial	Slightly beneficial	Very beneficial	Moderately beneficial	Moderately beneficial	Moderately beneficial	Moderately beneficial	Very beneficial	Moderately beneficial	Very beneficial
	Extremely beneficial	Moderately beneficial	Extremely beneficial	Extremely beneficial	Extremely beneficial	Extremely beneficial	Extremely beneficial	Extremely beneficial	Extremely beneficial	Moderately beneficial	Moderately beneficial
	Very beneficial	Very beneficial	Slightly beneficial	Extremely beneficial	Slightly beneficial	Slightly beneficial	Very beneficial	Moderately beneficial	Very beneficial	Slightly beneficial	Very beneficial
	Very beneficial	Very beneficial	Extremely beneficial	Moderately beneficial	Very beneficial	Slightly beneficial	Extremely beneficial	Slightly beneficial	Slightly beneficial	Slightly beneficial	Extremely beneficial
	Moderately beneficial	Very beneficial	Moderately beneficial	Very beneficial	Very beneficial	Very beneficial	Very beneficial	Very beneficial	Very beneficial	Moderately beneficial	Very beneficial
	Extremely beneficial	Extremely beneficial	Extremely beneficial	Extremely beneficial	Extremely beneficial	Extremely beneficial	Extremely beneficial	Extremely beneficial	Extremely beneficial	Extremely beneficial	Extremely beneficial
Average	Very beneficial 3.75	Very beneficial 3.58	Very beneficial 3.58	Very beneficial 3.91	Moderately beneficial 3.33	Moderately beneficial 2.83	Very beneficial 3.55	Moderately beneficial 3.41	Very beneficial 3.83	Moderately beneficial 3.42	Very beneficial 3.91
Ranking	4	5	5	1	10	11	7	9	3	8	1

[Return to contents](#)



ACT
Government
Office of the Surveyor-General

Associate Surveyors - The Poll

Question: What future events would you prefer?

- The table shows the responses received.
- The responses indicated the following approaches are preferred by respondents:
 - Micro credentials,
 - A Structured learning approach, and
 - Delivered in a short form way, using
 - Evening events

Topic	No of Responses
Micro credentials	7
Structured learning	7
Short form (over months)	8
Long form (over years)	2
Day events	5
Evening Events	8
Social Events	3

[Return to contents](#)

Associate Surveyors - The Poll

Other Questions	Responses
Are you a member of a professional organisation?	<ul style="list-style-type: none">• 6 said yes• 6 said no
If not, what would you look for in a professional organisation?	<ul style="list-style-type: none">• Provide a further classification based off proven skills• Readily available support and advice
Is there any other training you would find helpful for your career?	<ul style="list-style-type: none">• ACT cadastral framework – Legislation, subdivision processes, leases and assessments for registration• A course for Associates to have the some of the rights of professionals?• MGA2020 v ACT Map Grid including Scale factors & static surveys• Road and railway surveys
Other comments	<ul style="list-style-type: none">• Need a local pathway to registration rather than NSW• Need to know what percentage of Associate Surveyors want registration as opposed to those who don't.• Financial support for vocational training such as Cert IV and Diploma

[Return to contents](#)

Associate Surveyors - Events in 2026

- Date: Tuesday, 21 April 2026 – Save the date
- Time:
 - 4.30 pm for a
 - 5pm start, and
 - Dinner from 7 pm
- Run by ISNSW and OSGLI
- Location OSGLI Office in Dickson ACT.
- Cost: To be confirmed. A light meal and soft drinks to be provided.
- This is your chance to discuss the issues that affect you in the profession and to learn.
- Topics may include – Responding to the Associate Surveyor poll, training for your career development, Datum Ground Level changes, compliance surveys, and ACT control surveys awareness. Full details will be provided soon.
- The next event is October 2026. Date to be confirmed.



[Return to contents](#)



ACT
Government

Office of the Surveyor-General

Engineering Surveyors - Certification

The Certified Engineering Surveyor credential, is now being delivered by Surveyors Australia (SA)

- Must be a financial member of SA
- Have a Diploma in Surveying
- Cost is \$550 including GST.

ISNSW is still re-developing its own Engineering Surveyor Certification.

There will be no regulation of Engineering Surveyors at this time.



Surveyors Australia
CERTIFIED ENGINEERING SURVEYOR FRAMEWORK

Verified. National. Professional.

The New Certified Engineering Surveyor Framework
The National Standard for Engineering Surveying

- ✓ Extended eligibility pathways
- ✓ Apply now and upload evidence progressively
- ✓ Comprehensive Competency Framework
- ✓ Fit-for-purpose Project Contexts
- ✓ New Application Portal
- ✓ Dedicated Engineering Webinar Series

APPLICATIONS OPEN

[Return to contents](#)



ACT
Government

Office of the Surveyor-General

Cadastral Surveyors – Victorian pathway to Registration



The Victorian Surveyors Board did a review into its Surveyor Licensing (Registration) system.

The Review Recommendations are:

- Develop a competency framework – **completed**
- Broaden approved tertiary courses of study to include Part-time and online options; Generalist degrees; and Bridging courses
- Develop a blended training module for demonstration of competency (competency assessment)
- Streamline the licensing process – more transparency

[Return to contents](#)

Cadastral Surveyors – Victorian pathway to Registration

Observations

Competency framework – Includes:

- Common surveying competencies applicable anywhere in Australia, and
- Specific, jurisdictionally based cadastral competencies.

Pilot program

- A supportive, structured learning process delivered in 3 years
- Attend face to face training
 - A cohort of graduates working together in small groups
 - Initially limited to candidates living within 150 km of Melbourne



[Return to contents](#)

Cadastral Surveyors – Victorian pathway to Registration

- Details of the process outlined in the table.
- Year 1 – completed.
- A review of year 1 is not complete.

<i>First Year - 2025</i> Completed	<i>Second Year - 2026</i>	<i>Third Year - 2027</i>
Survey Measurements & Computation 1.1	Survey Measurements & Computation 1.2	Land Law and boundary definition 3.3
Record Systems & Survey Information 2.1	Record Systems & Survey Information 2.1	Professional Practice
Land Law and boundary definition 3.1	Land Law and boundary definition 3.2	Field Based Assessment
Planning and Land Development (Planning Institute of Australia)	Planning and Land Development	Interview

[Return to contents](#)

OSGLI Audits of Supervision by Registered Surveyors

- A pilot quality assurance review was conducted in October 2024, some findings:
 - responses focussed more on how they supervised staff, rather than how they kept records
 - overly relied on remote supervision
 - for the full report see: [Meeting Agenda of the Survey Practice Advisory Committee](#)
- Following the [Surveyor-General Guideline 13](#), records and processes of supervision are subject to audit.
- OSGLI will be undertaking an audit of Supervision by Registered Surveyors in February & March 2026.
- Please note the audit is intended to be educational and not part of any disciplinary process.

[Return to contents](#)



ACT
Government

Office of the Surveyor-General

OSGLI Examination Update

Timeframes

- Plan lodgement volume has increased and timeframes are still being met.

Units Plans

- Check the Addressing before lodging to avoid this common requisition.
- ACTmapi displays all addresses assigned to a block.
- Guideline 17 is under review. Please send any suggestions to actplasurvey@act.gov.au

Digital Data

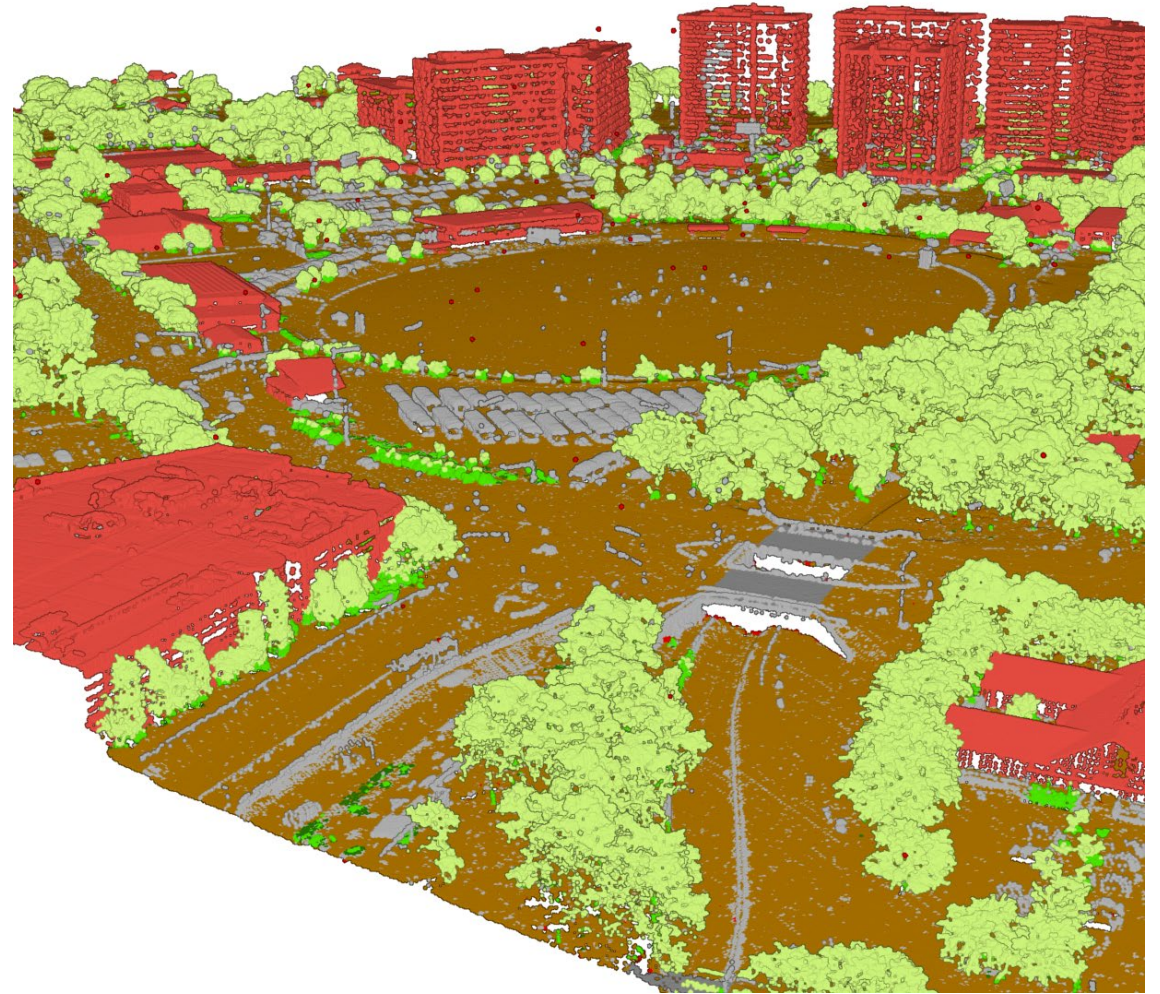
- Thanks for lodging block and easement digital data
- Note that UPs will not be examined until digital data for Class B Units is received

[Return to contents](#)

OSGLI Land Information team - LiDAR

The LiDAR dataset is currently in the Approval stage to allow for release to the public.

An email will be circulated when the data is available.



[Return to contents](#)

OSGLI Land Information Team - One Stop Shop for Surveyors

The Beta version of the One Stop Shop has been running for a few months.

Now is the time to provide feedback about how its working for you. Please email spatialdata@act.gov.au



[Return to contents](#)



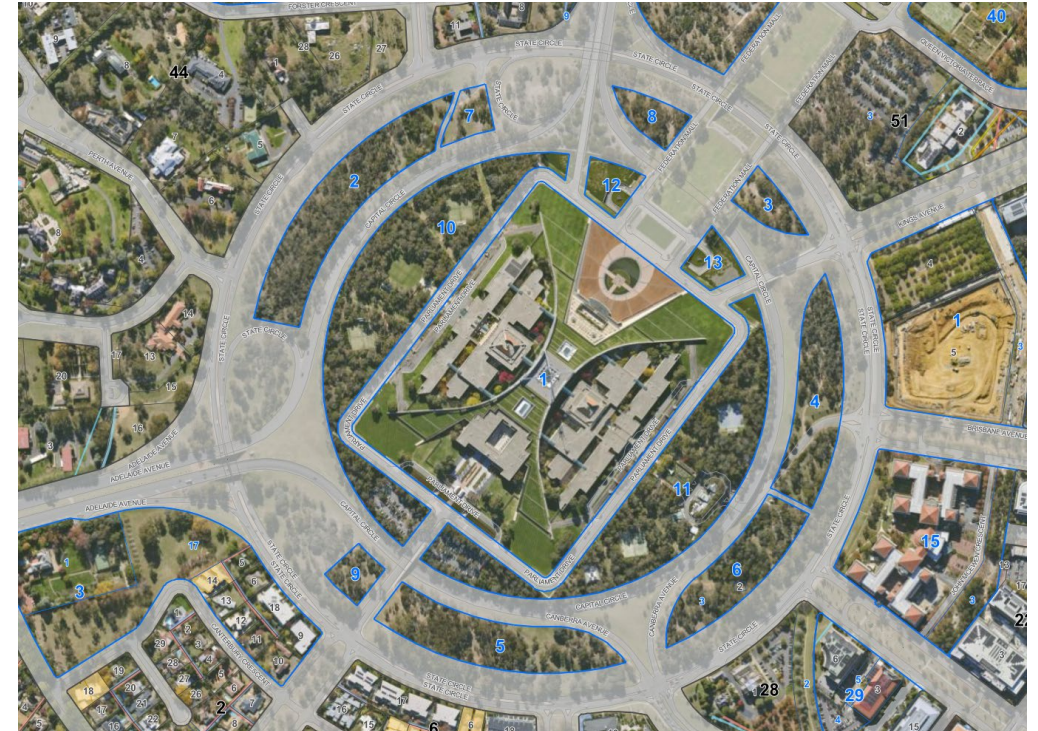
ACT
Government

Office of the Surveyor-General

OSGLI Land Information Team – Aerial Imagery

Contract for Aerial Photography ends on the 30/06/2026.

OSGLI is planning for a new capture program but may be delayed until a funding decision is made.



[Return to contents](#)



ACT
Government

Office of the Surveyor-General

Datum Ground Level (DGL) - Supreme Court Decision outcomes

Supreme Court Decision

Date: 19 December 2025

Re: Block 4, Section 4 in the Division of Forrest

- The term 'Operational Acceptance' in the previous Territory Plan versions and the current SG guideline No. 3 only applies to a period after 2010, when it was first used.
- For surveys of blocks in infill areas that were developed prior to 2010, DGL must be determined pursuant to Surveyor-General Guideline No. 3 dated 10 January 2025.
- It is recognised that determining DGL across the area of disturbance may be difficult. The second main outcome from the case may provide a solution going forward. See the next slide.



[Return to contents](#)



ACT
Government

Office of the Surveyor-General

Datum Ground Level (DGL) - Supreme Court Decision

2 different methods of determining DGL by 2 different registered surveyors in relation to the subject block were considered.

- Method 1 relied on the 1910 Scrivener plan to provide the 'indicative shape' of the 5-foot contours across the block together with the newly surveyed levels of the land around the block.
- Method 2 relied on the 1922 'Blandfordia' plan of levels with 1-foot contours across the section together with newly surveyed levels of the land around the block. The plan was found in the National Archives.

There will be a presentation on this topic, at the ISNSW event on 24 March 2026, where we will consider options for the future based on the Supreme Court case decision.



[Return to contents](#)

Datum Ground Level – Changes to Greenfield DGL surveys

Background

- Surveyor-General Guideline No. 3 (G3), published on 10 January 2025, requires DGL to be determined for new Greenfield developments, which is to include the:
 - New blocks,
 - Adjacent road verges, and
 - Adjacent unleased Territory Land within the stage
- The time and cost of surveying the adjacent Territory Land is prohibitive at a time when we are trying to minimise the cost of developing land for housing.
- The 2025 LiDAR dataset vertical accuracies are +/- 60 mm on hard surfaces which is similar to the DGL specifications.

The Changes

- For the unleased Territory Land in a Greenfield development stage, a Registered Surveyor will only be required to perform a DGL survey of the
 - New blocks, and
 - Adjacent road verges.
- The Territory Land DGL will be determined from ACT government LiDAR.
- All other requirements remain the same including
 - Certification & lodgement – G3, Section 8
 - Survey Standards – G3, Section 9
 - Data Standards – G3, Section 10
 - Plan Standards – G3, Section 11

[Return to contents](#)

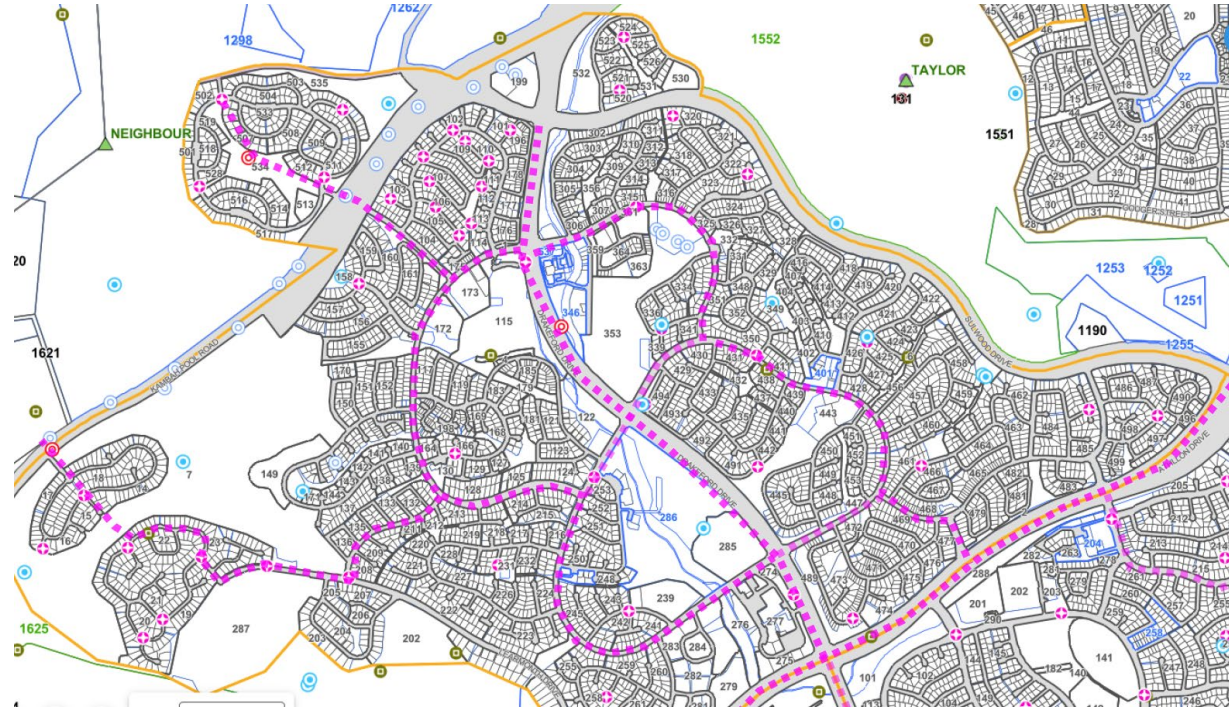
Control Surveys – OSGLI levelling - A different approach

Upgrade of U/U marks

- A pilot project in Fraser successfully upgraded the vertical accuracy of U/U KBMs & SRs to LC/L3 by analysing the original levelling field books.
- The long-term project will continue in priority areas.

OSGLI will now perform:

- ‘Spine’ levelling to provide a framework to support future contract infill levelling.
- Reconnaissance and maintenance of marks.



An indicative ‘Spine’ levelling framework in Kambah

[Return to contents](#)



ACT
Government

Office of the Surveyor-General

Control Surveys – OSGLI Contract levelling

- Contract surveyors will:
 - Coordinate and/or Level the remaining survey marks to Class E and LF/C standards respectively
 - Perform the Least Squares adjustment of the survey, and
 - Lodge the standard Control Survey Plan, Report and 3D position information
- OSGLI is currently going to market for the infill levelling of control marks in Forrest. The levelling may be either be:
 - Class LF (Differential Levelling) or
 - Class C (3D EDM Traversing)
- Future contracts will focus on areas of need resulting from industry polling last year and internal spatial analysis of Development Applications lodged.

[Return to contents](#)



ACT
Government

Office of the Surveyor-General

ACT Happenings – CPD for Registered and other Surveyors

ISNSW Twilight CPD Event – Save the date

- Date: Tuesday, 24 March 2026. 5pm start for 2.5 hours
- Location: OSGLI offices at Dickson ACT.
- Dinner after
- See the ISNSW events calendar for further details.

Associate Surveyor event – Save the date

- Date: Tuesday, 21 April 2026. 5pm start for 2 hours
- Location: OSGLI offices at Dickson ACT.
- Dinner after
- See the ISNSW events calendar for further details.



**Institution of
Surveyors**
New South Wales

[Return to contents](#)



ACT
Government
Office of the Surveyor-General

Feedback

Please provide feedback on any of the topics included in this update to:

Surveyors.Registrar@act.gov.au

[Return to contents](#)



ACT
Government

Office of the Surveyor-General

The End

