

25. June 2018

Application Number 201700053
Section 8, Blocks 9 & 11 Fyshwick, ACT

EPDCustomerServices@act.gov.au

Proposed Inner South

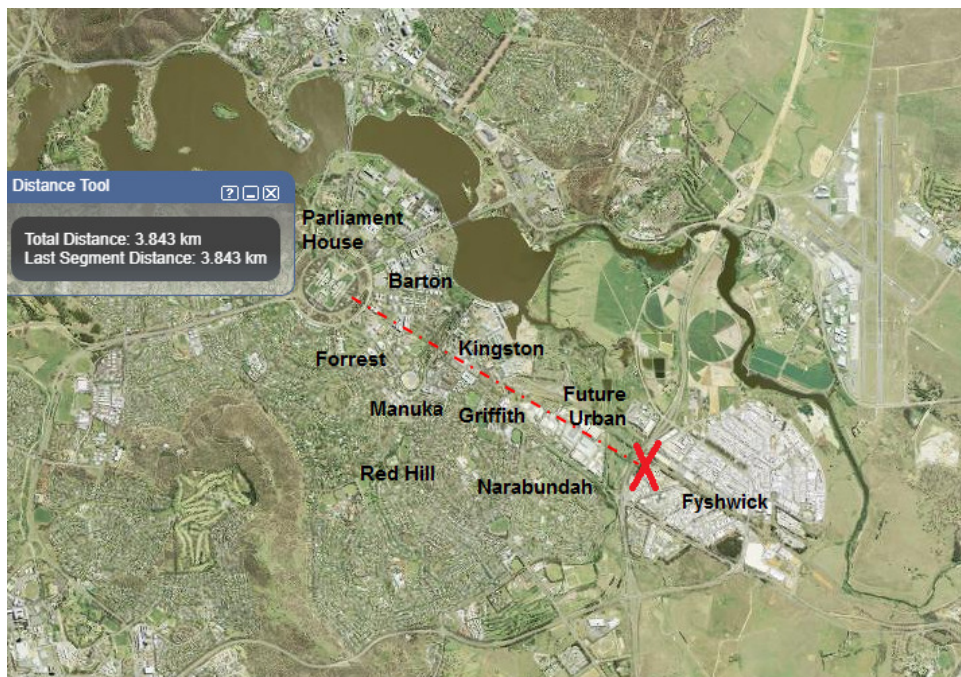
1. **Materials Recovery facility and Rail Freight Terminal (MRF)**
2. **Waste to Energy incinerator - deferred ancillary ***

Rejection Notice

Extensive community consultation has met with overwhelming concern and outright rejection due to urban proximity (eg. Harmonie German Club Public Meeting 2017)

More than a few academic submissions responding to 201700053 EIS methodically document the case for rejection.

Simply put: **The project is catastrophically flawed from the outset because this facility cannot be located in a populated urban location less than 4 km from Parliament House.**



* The Waste to Energy Incinerator Facility remains available in the Government instrument, NI2017-389 as advised by ACTPLA until expiry in January 2019. described in the CRS Applicant application as...

This request for a separate EIS scoping document comes after extensive community consultation as part of the process for application number 20170002[5]3, which has influenced our approach to split the original proposal into its key components.

1. *The Materials Recovery facility and Rail Freight Terminal (MRF)*
2. *The Waste to Energy facility (WtE)*

We consider the WtE ancillary to the overall solution in that it is dealing with residues from the MRF and does not impact on its effectiveness or viability. As such we are proposing to proceed with an EIS process to be undertaken for the WtE component at a later date