

# Molonglo Valley Strategic Assessment

## Annual Report 2019-2020

Annual report for the Molonglo Valley Plan for the Protection of Matters of National Environmental Significance (NES Plan) for the period of 1 July 2019 to 30 June 2020

**Environment, Planning and Sustainable Development Directorate, ACT Government**

**25 November 2020**

### **Key Contact**

Impact Assessment

Planning Delivery

Environment, Planning and Sustainable Development Directorate

GPO Box 158

CANBERRA ACT 2601

[www.planning.act.gov.au](http://www.planning.act.gov.au)

[EPDImpact@act.gov.au](mailto:EPDImpact@act.gov.au)

## Contents

List of abbreviations .....	1
1 Introduction .....	2
2 Background .....	2
3 Implementation of the NES Plan .....	3
3.1 Development completed in 2019-20 .....	3
3.2 Report on performance by outcome/commitment .....	5
3.3 Other NES Plan requirements and actions .....	14
3.4 Corrections to information and data .....	17
3.5 Impacts on MNES .....	18
3.6 Expert Panel Review Report .....	21
3.7 Independent Audit .....	21
4 Deviation or non-compliance .....	21

Appendix A – Completed commitments

Appendix B – Publicly available documents referenced in NES Plan annual report

## List of abbreviations

ACT	Australian Capital Territory
AMS	Adaptive Management Strategy
BGW	Box-Gum Woodland. White Box – Yellow Box – Blakely’s Red Gum Grassy Woodland and Derived Native Grassland
CEMP	Construction Environment Management Plan
CMTEDD	Chief Minister, Treasury and Economic Development Directorate
DAWE	Department of Agriculture, Water and the Environment (formerly the Department of the Environment and Energy until February 2020)
EDP	Estate Development Plan
EPBC Act	<i>Environment Protection and Biodiversity Conservation Act 1999 (Cth)</i>
EPSDD	Environment, Planning and Sustainable Development Directorate
ESA	Emergency Services Agency
JGD	John Gorton Drive
LDA	Land Development Agency (under CMTEDD) (Active until 30 June 2017)
MNES	Matters of National Environmental Significance
NES Plan	Molonglo Valley Plan for the Protection of Matters of National Environmental Significance
NSW	New South Wales
NTG or Natural Temperate Grassland	Natural Temperate Grassland of the Southern Tablelands of NSW and the ACT
PCS	ACT Parks and Conservation Service
PDF	Planning and Design Framework
PTWL	Pink-Tailed Worm Lizard, <i>Aprasia parapulchella</i>
RMP	Reserve Management Plan
SLA	Suburban Land Agency (Established 1 July 2017), formerly the Land Development Agency (LDA).
TCCS	Transport Canberra and City Services (formerly Territory and Municipal Services (TAMS))

Note: References to Department and Directorate names in the body of this report are accurate as at the end of the reporting period, 30 June 2020.

## 1 Introduction

This Annual Report is prepared in accordance with Section 6 of the NES Plan, September 2011. It reports on the implementation of the NES Plan from 1 July 2019 to 30 June 2020.

Section 6 of the NES Plan requires the ACT Government to monitor and report annually on the implementation of the NES Plan. The primary purpose of monitoring and reporting is to ensure that the conservation outcomes described in the NES Plan are achieved.

The published targets in the ACT Government's 2019-20 to 2022-23 Indicative Land Release Program indicated the release of 926 residential dwelling sites (comprised of 326 dwelling in Coombs, and 600 dwellings from the initial release in Whitlam- the newest suburb in Molonglo Valley and the first release from Molonglo Valley stage 3); 5,141m<sup>2</sup> of community facility zoned land and the release of 6,582m<sup>2</sup> of mixed use land.

The actual land release outcome for Molonglo Valley included:

- 930 residential dwelling sites made up of 355 standard residential (detached house) blocks, and 575 multi-unit dwelling sites. Releases were recorded in Coombs (326 dwelling sites) and in Whitlam (604 dwelling sites);
- 6,582m<sup>2</sup> of mixed-use land in Coombs; and
- 4,783m<sup>2</sup> of community use land in Wright.

## 2 Background

In September 2008, the ACT and Commonwealth governments entered into an Agreement to conduct a strategic assessment under Part 10 of the EPBC Act. The strategic assessment included all of East Molonglo except for the suburbs of North Weston, Wright and a portion of Coombs. These suburbs have prior approval under the EPBC Act (Reference numbers: 2009/5041, 2009/4752 and 2009/5050). Refer to Figure 1 for the strategic assessment area.

The NES Plan, which details the ACT Government's commitments to protect MNES in the Molonglo Valley, was assessed by the Commonwealth and endorsed in October 2011. Actions associated with urban development within East Molonglo (not including the West Molonglo area) were approved by the Commonwealth in December 2011.

West Molonglo was included in the scope of the strategic assessment as it contained MNES and was part of the same overall process to establish the Structure Plan. However, annual reporting for the Molonglo NES Plan will not report on West Molonglo from 2019-20 onwards. Riverview Projects (ACT) Pty Ltd will report on West Molonglo annually as part of the West Belconnen Strategic Assessment, which is now referred to as Ginninderry.

The NES Plan establishes a set of conservation activities to protect MNES. These are broadly based around the following hierarchy of steps:

- avoidance of impacts on MNES;
- mitigation of impacts on MNES including on-ground management to provide maintenance and improvement of MNES values in important areas; and
- establishing offset areas to compensate for unavoidable impacts on MNES.

The MNES that require protection through the NES Plan are:

- White Box – Yellow Box – Blakely's Red Gum Grassy Woodland and Derived Native Grassland (Box-Gum Woodland);

- Natural Temperate Grassland of the Southern Tablelands of NSW and the ACT (Natural Temperate Grassland);
- *Aprasia parapulchella* (Pink-tailed Worm Lizard);
- *Polytelis swainsonii* (Superb Parrot); and
- *Lathamus discolor* (Swift Parrot).

### 3 Implementation of the NES Plan

EPSSD currently has responsibility for monitoring and reporting on the delivery of the NES Plan on behalf of the ACT Government.

The NES Plan specifies conservation outcomes that the ACT Government will deliver to protect MNES and the actions that will be undertaken to achieve those outcomes. Section 4 of the NES Plan provides 44 specific actions related to conservation outcomes for Box-Gum Woodland, Natural Temperate Grassland and Pink-tailed Worm-lizard.

The NES Plan does not set out specific conservation outcomes and actions in relation to the Superb Parrot and Swift Parrot. These species are therefore not included in the table. However, the NES Plan states that the most important conservation action for Superb Parrot and Swift Parrot is the protection and ongoing management of the Kama Nature Reserve which includes approximately 117 ha of Box Gum Woodland. Additionally, conservation outcomes detailed in section 4.1 of the NES Plan for patches C, D, H, I, L, M, P, T, West Molonglo and Patch GG will benefit Superb Parrots and Swift Parrots.

#### 3.1 Development completed in 2019-20

The following development was undertaken or approved in the Molonglo Valley Strategic Assessment Area in 2019-20:

- landscaping and path networks in Denman Prospect, Coombs, and Wright;
- completion of John Gorton Drive Stage 3B, the next 500m to the south of Stage 3A, which includes another signalised intersection into Whitlam;
- completion of Whitlam Stage 1A and Stage 1B and the commencement of Stage 2A; and
- completion of Denman Prospect 1A and 1B.

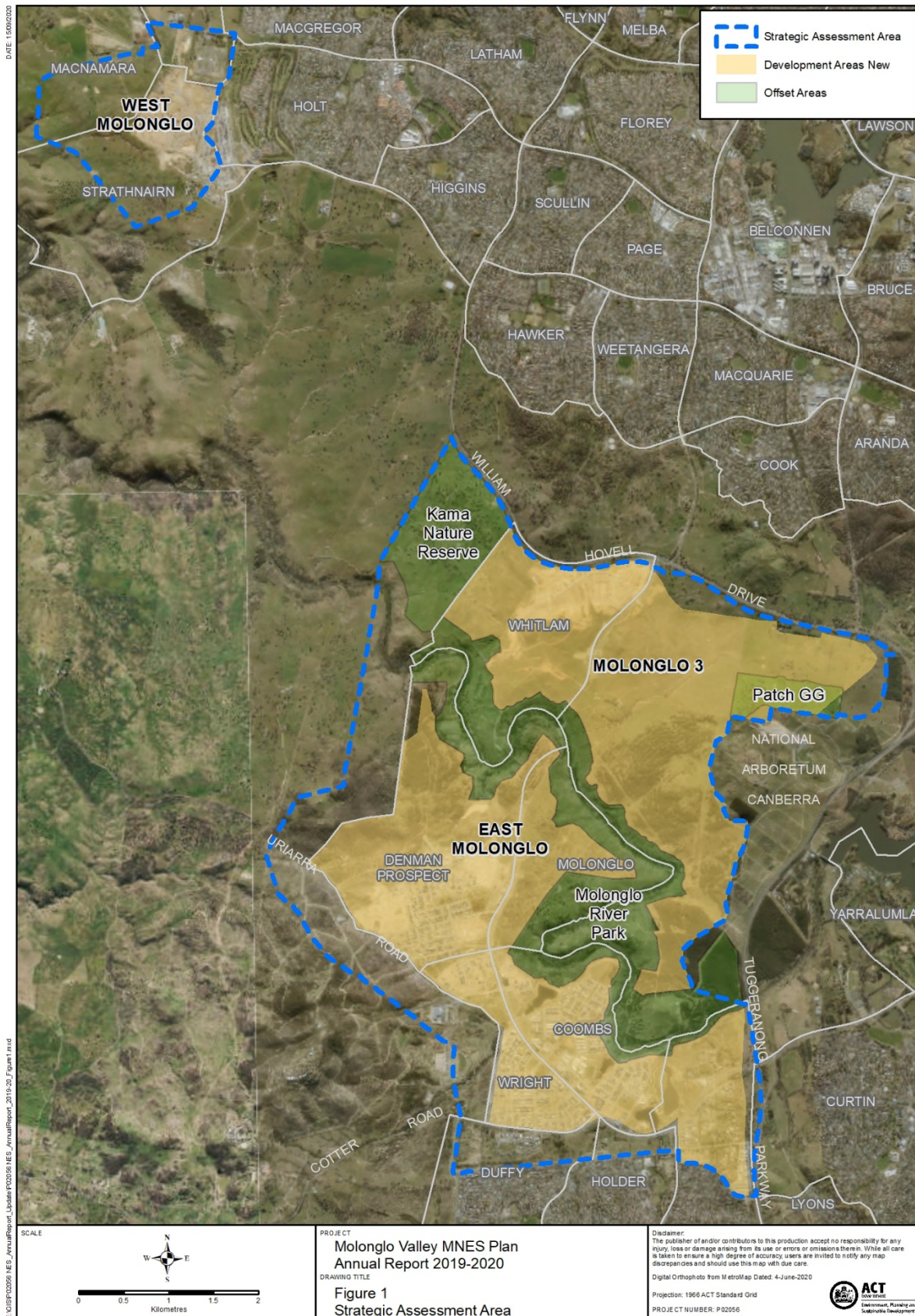


Figure 1 Molonglo Valley Strategic Assessment Area

### **3.2 Report on performance by outcome/commitment**

Table 1 describes the commitments from the NES Plan and the status of each commitment. Commitments which have been completed during the 2019-2020 financial year are shaded green.

See Appendix A for commitments that were completed in previous years.

Table 1 Commitments, delivery and timing

NES Plan Ref	Action	Responsible Entity	Timing	Current status
<b>Actions to achieve the conservation outcomes for Box Gum Woodland</b>				
Impacts to Box-Gum Woodland will be limited to a maximum of 110 ha and a range of measures will be implemented to minimise this area of impact.				
1	Ensure that the combined impacts on Box-Gum Woodland from development within East Molonglo and construction of infrastructure within the river corridor do not exceed 110 ha.	EPSDD	Throughout and on completion of the final Planning and Design Framework (PDF) for both stages 2 and 3 and through the approval of estate development plan (subdivision) development applications.	See Section 3.5- Impacts on MNES, Table 3 and Figure 2 show that the amount of Box Gum Woodland that has been impacted to date does not exceed this limit.
2	Amend the East Molonglo river corridor boundary, in stages 2 and 3 respectively with a view to reducing the impacts to Box-Gum Woodland. This process will ensure that connectivity within the river corridor is maintained.	EPSDD	Progressively, on completion of the final EDPs for stages 2 and 3, respectively.	<p>Ongoing.</p> <p><a href="#">Stage 2 PDF</a> finalised in 2012.</p> <p>The interim limited area planning and design framework for Molonglo Valley Stage 3 was approved in March 2017.</p> <p>The <a href="#">Stage 3 PDF</a> was finalised in February 2019 and in response, the interim limited areas PDF was withdrawn.</p> <p>Note that the formal mechanism for finalising river corridor boundaries is through the approval of final EDPs as it allows minor refinements as a technical amendment to the Territory Plan (e.g. for Suburbs 2 and 3 within Molonglo <a href="#">Stage 3 PDF</a>). Minor refinements would only be made if they were required to enable a functional estate and would be assessed for any potential impacts to biodiversity to ensure consistency with the NES Plan. See section 3.4 of this report for more information about amendments to river corridor boundaries.</p>
3	Design the infrastructure that will occur in the river corridor to minimise impacts to Box-Gum Woodland.	CMTEDD and EPSDD (PCS, Infrastructure Planning)	Prior to the construction of infrastructure.	<p>Ongoing. Work is continuing to progress on the range of infrastructure projects needed to support urban development in Molonglo. This includes work on John Gorton Drive Stage 3C (that includes a major road bridge crossing over the Molonglo River), relocation of 132 kV electricity transmission lines, sewer odour control facilities and the East-west arterial road. Of the overall budget of 110 hectares impact to Box-Gum woodland, allowed for in the NES Plan, current projects completed and proposals in design identify 11.18 hectares of impact.</p> <p>Design principles are adopted by the Territory and incorporated in contracts for design and construction projects.</p> <p>The extent of recreational infrastructure proposed in the <a href="#">River Park Concept Plan</a> was reviewed through the draft Plan of Management process, with two significant refinements:</p> <ul style="list-style-type: none"> <li>- where practicably possible, the trunk cycle path will be relocated within the Inner Asset Protection Zone to utilise the lighting corridor of the edge road and minimises fragmentation of the River Park; and</li> <li>- recreation facilities such as parks, access roads, car parking, barbecues and toilets will be centralised to the two special purpose reserves—Namarag Reserve (Sludge Pits) and Ryans Hill.</li> </ul> <p><a href="#">Ecological Management Guidelines</a> were completed in 2015.</p>

				<p>EPSDD prepared an early draft Urban Edge Master Plan for the Commercial Centre &amp; Environs in Stage 2 to assist the final location of the development boundary and associated infrastructure. EPSDD is now progressing further planning of Stage 2 and are consulting internally with PCS.</p> <p>TCCS have completed the early design of the JGD approach roads and bridge over the Molonglo River and have coordinated with EPSDD PCS to minimise impact and risk to BGW and PTWL habitat. An EIS Exemption was granted by the Minister for Planning and Land Management and an Impact Track DA for the project is expected to be lodged shortly.</p> <p>SLA took responsibility over 2019-2020 for the design and construction of four Odour Control Units attached to the Molonglo Valley Interceptor Sewer. These units are located both adjacent and within the river corridor and have been designed to have no impact on Box Gum Woodland.</p>
4	Develop, implement and independently monitor Construction Environmental Management Plans (CEMPs) to ensure that unforeseen direct or indirect impacts from construction activities within the development area and the river corridor are avoided.	EPSDD	Development of CEMPs prior to construction. Implementation of CEMPs during construction.	<p>Ongoing. CEMPs have been prepared for all approved estate developments within the strategic assessment area.</p> <p>EPSDD has incorporated the requirement for CEMP's in all capital works infrastructure documentation for Molonglo and has engaged a site surveillance officer to monitor capital works projects in Molonglo.</p> <p>The requirement for CEMP's has been incorporated into all capital works documentation for Molonglo River Park.</p> <p>During 2019-2020, three CEMPs were approved for construction work in Molonglo Valley: John Gorton Drive Bridge Geotechnical Works, Whitlam Stage 1A, and Coombs 3a Phase II. To date, 41 CEMPs have been prepared and approved for construction work in Molonglo Valley. This has been done for minor preliminary works such as geotechnical investigations, fencing and utility relocations, as well as all major construction activities such as roadworks, bridges and ponds.</p>
Three offset sites will be established within the strategic assessment area (Kama Nature Reserve, Molonglo River Park, Patch GG) that will provide for the long-term protection of 234 ha of Box-Gum Woodland (see Figure 6 of NES Plan). The three offset sites will be adaptively managed to maintain and enhance the ecological condition of the Box-Gum Woodland that occurs there.				
6	Implement the management plan for the Kama Nature Reserve to provide for the maintenance and enhancement of the ecological condition of Box-Gum Woodland within the reserve.	EPSDD (PCS)	Commencement on completion of Action 5. Implementation ongoing.	<p>Ongoing. Management is being undertaken in line with the <a href="#">operational plan</a>.</p> <p>Management actions undertaken over 2019-2020 to maintain and enhance the ecological condition of Box-Gum Woodland include management of the understorey condition through:</p> <ul style="list-style-type: none"> <li>- St John's wort control;</li> <li>- African Lovegrass control;</li> <li>- Woody weed control;</li> <li>- conservation grazing targeting wild oats; and</li> <li>- continuation of Kama forb enhancement program.</li> </ul>
7	Establish a buffer outside the Kama Nature Reserve between the reserve and the proposed development area and allow for appropriate uses consistent with nature conservation uses of the reserve. The buffer will be developed to ensure that fire management is undertaken outside of the Kama Nature Reserve and will provide protection against urban edge effects.	EPSDD (PCS, Strategic Planning and Land Development Projects)	As part of the final PDF for stage 3 and confirmed through the approval of estate development plan (subdivision) development applications.	<p>Ongoing.</p> <p>On 8 May 2018, the ACT Minister for Planning and Land Management granted the Molonglo Stage 3 Urban Development project an exemption from the requirement to undertake an environmental impact statement under the <i>Planning and Development Act 2007</i>.</p> <p>The exemption included several conditions for development approval including that the treatment and boundary to Kama Nature Reserve must be consistent with the recommendations of the <a href="#">Kama Interface Management Strategy</a> (Capital Ecology 2016). This condition has been incorporated into</p>

				and represented in the PDF for Stage 3, which was approved in February 2019. Stage 4 of Whitlam is currently in the concept planning stage and incorporates a buffer consistent with that outlined in the Kama Interface Management Strategy (Capital Ecology 2016).
10	Implement the management plan for the Molonglo River Park to provide for the maintenance and enhancement of the ecological condition of Box-Gum Woodland within the park.	EPSDD (PCS)	Commencement on completion of Action 9. Implementation ongoing.	Ongoing. From 2012, EPSDD has undertaken a number of restoration works within the river corridor in line with the Molonglo River Park operational plans and the <a href="#">Molonglo River Reserve Management Plan</a> . Detailed consultation and designs for the first Molonglo special purpose reserve (north), including a remediation action plan for the former Coppins Crossing sewage treatment ponds were progressed in 2018-19. Significant woodland restoration will be undertaken as part of site rehabilitation works scheduled for late-2020. Other management actions undertaken during 2019-2020 include: <ul style="list-style-type: none"> <li>- African Lovegrass control;</li> <li>- St John's Wort control;</li> <li>- Chilean needle grass control;</li> <li>- woody weed control;</li> <li>- Serrated tussock control;</li> <li>- willow control;</li> <li>- riparian restoration plantings</li> <li>- Box Gum woodland restoration plantings (approximately 4000 plants);</li> <li>- continuation of Box Gum Park for enhancement program;</li> <li>- continuation of the Barrer restoration program; and</li> <li>- various public engagement activities, ranging from ranger guided walks to promotional videos, conference field trips and university field trips.</li> </ul>
13	Implement the management plan for Patch GG to provide for the maintenance and enhancement of the ecological condition of Box-Gum Woodland.	EPSDD (PCS)	Commencement on completion of Action 12. Implementation ongoing.	Ongoing. Management is being undertaken in line with the <a href="#">operational plan</a> . Management actions undertaken in 2019-20 include: <ul style="list-style-type: none"> <li>- Chilean needlegrass control;</li> <li>- St John's Wort control;</li> <li>- continuation of the Arboretum woodland conservation area for enhancement program; and</li> <li>- conservation grazing, targeting wild oats and other exotic annuals.</li> </ul>
Adaptively manage 28 ha of Box-Gum Woodland within the strategic assessment area to maintain and enhance its ecological condition. This will be made up of patches C, H and N.				
15	Implement management plans for Box-Gum Woodland patches C, H, and N to provide for the maintenance and enhancement of the ecological condition of Box-Gum Woodland within these areas.	EPSDD (PCS)	Commencement on completion of Action 14. Implementation ongoing.	Ongoing. Management is being undertaken in line with the operational plan. Extensive BGW restoration plantings (including 2000 trees and shrubs) were undertaken in mid-2019. Fences in patches C, H and N have been realigned to better represent vegetation community boundaries.
Adaptively manage 45.4 ha of Box-Gum Woodland within the strategic assessment area to maintain its ecological condition. This will be made up of patches I, L, M and P.				

17	Undertake fuel hazard management in patches I, L, M and P with the management and protection of Box-Gum Woodland as a critical consideration (within the constraints of ensuring the safety of the urban population).	EPSDD (PCS)	On completion of Action 16.	As above. The <a href="#">Bushfire Risk Strategy</a> (Strategy) undertaken by the SLA, sets out the management requirements both within and immediately outside the future urban development boundary in Denman Prospect taking into account Box Gum Woodland. This Strategy is supported by ESA and the Fire Management Unit of TCCS. Fuel management is being undertaken in line with the strategy and with protection of BGW as a critical consideration. An ecological burn was undertaken in Patch P in 2019 to reduce blackberry thatch and promote BGW regeneration, while also reducing fire fuel levels.
18	Annually monitor the condition of the Box-Gum Woodland patches I, L, M, P (total area of 45.4 ha) on the western boundary of East Molonglo to ensure that fuel hazard management is not negatively impacting on the Box-Gum Woodland values.	EPSDD (PCS)	On completion of Action 16.	Ongoing. A <a href="#">Monitoring Procedures Manual for Molonglo</a> was prepared by EPSDD in 2013 in accordance with the AMS. EPSDD has undertaken annual vegetation monitoring since 2013, in accordance with the monitoring procedures manual.
19	Should the monitoring in Action 18 show that: <ul style="list-style-type: none"> <li>• for a period of two consecutive years;</li> <li>• more than 30% of the combined area of patches I, L, M, P (total area of 45.4 ha) no longer meets the EPBC Act listing criteria for Box-Gum Woodland;</li> </ul> then the ACT Government will establish an offset site within two years of those monitoring results that meets the following criteria: <ul style="list-style-type: none"> <li>• the offset will be in the Molonglo Valley; and</li> <li>• the offset will include a minimum of 90.8 ha of EPBC Act listed Box-Gum Woodland.</li> </ul>	EPSDD	If required.	Monitoring is ongoing. EPSDD completed annual vegetation monitoring for the seventh consecutive year in 2019. Vegetation condition monitoring results show that the ecological condition of patches I, L, M, P1 and P3 has been maintained. Patch P2 showed decline in 2018, however this result was driven by a decrease in native grass cover, which was the result of an increase in leaf litter due to a fallen tree at the P2 monitoring site.  2019 monitoring results indicate native grass cover has increased to levels consistent with native grass cover in 2013. The floristic value score for Patch P2 remains unchanged.
20	Should an offset site be required under Action 19, then the offsite site will be established as a Nature Reserve and managed consistently with the other offset sites (Kama Nature Reserve, Molonglo River Park, Patch GG).	EPSDD (PCS)	If required.	Not required.

Actions to achieve the conservation outcomes for Natural Temperate Grassland				
No direct or indirect impacts to Natural Temperate Grassland.				
24	Protection of the Natural Temperate Grassland within the Kama Nature Reserve.	EPSDD (PCS)	Ongoing.	<p>In December 2018 EPSDD completed the <a href="#">Molonglo Field Guide</a> – a plant field guide for the Molonglo Valley Conservation Area to promote the ecological values of the reserve and thereby assist residents in the Molonglo Valley to protect the reserve.</p> <p>EPSDD is undertaking the following research:</p> <ul style="list-style-type: none"> <li>- grassland habitat research – slashing as a biomass management tool for NTG and BGW – research project; and</li> <li>- NTG ecosystem recovery through habitat rock supplementation.</li> </ul> <p>In 2016-17 and 2018-19, EPSDD conducted ecological burns within the Kama Nature Reserve. The burns were undertaken as part of a larger grassland restoration research project, which aims to improve the ecological condition of NTG. The grassland restoration project continued in 2019-20 and an additional ecological burn is planned for Autumn 2021.</p> <p>In 2016-17, EPSDD commenced a forb enhancement program in Kama Nature Reserve to enhance forb diversity, increase ecological condition and habitat values of NTG and BGW within Kama Nature Reserve and to implement and test BGW understorey enhancement recommendations informed by research undertaken by the ANU Fenner School. Implementation and management of the forb enhancement program continued in 2019-2020. Activities included ongoing weed control and adding additional seed to some of the sites.</p> <p>As of June 2020, there have been no impacts to Natural Temperate Grassland in the strategic assessment area (see Table 3).</p>
Adaptive management of the Natural Temperate Grassland that occurs within the Kama Nature Reserve to maintain and enhance its ecological condition.				
26	Implement the management plan for the Kama Nature Reserve to provide for the maintenance and enhancement of the ecological condition of Natural Temperate Grassland within the reserve.	EPSDD (PCS)	Commencement on completion of Action 25. Implementation ongoing.	<p>Ongoing. Management is being undertaken in line with the <a href="#">operational plan</a>. Management actions undertaken over 2019-2020 to maintain and enhance the ecological condition of Natural Temperate Grassland include:</p> <ul style="list-style-type: none"> <li>- St John's wort control;</li> <li>- African Lovegrass control;</li> <li>- woody weed control;</li> <li>- conservation grazing targeting wild oats;</li> <li>- continuation of Striped Legless Lizard translocation trial;</li> <li>- continuation of Kama forb enhancement program;</li> <li>- continuation of habitat rock reinstatement research project; and</li> <li>- continuation of grassland restoration research project testing the effectiveness of ecological burns for restoring grassland habitat.</li> </ul>
27	Establish a buffer outside the Kama Nature Reserve between the reserve and the proposed development area and allow for appropriate uses consistent with nature conservation uses of the reserve. The buffer will be developed to ensure that fire management is undertaken outside of the Kama Nature Reserve and will provide protection against urban edge effects.	EPSDD (PCS, Strategic Planning and Land Development Projects)	As part of the final PDF Stage 3 and confirmed through the approval of estate development plan (subdivision) development applications.	Please see response to commitment 7.
Actions to achieve the conservation outcomes for Pink-tailed Worm Lizard				

Impacts to high and moderate quality PTWL habitat will be limited to a maximum of 27 ha and a range of measures will be implemented to minimise this area of impact.				
28	Ensure that the combined impacts on high and moderate quality PTWL habitat from development within East Molonglo and construction of infrastructure within the river corridor do not exceed 27 ha.	EPSDD (PCS, (Infrastructure Planning), SLA (Molonglo Valley),	Progressively, on completion of the final EDPs for stages 2 and 3, respectively.	Ongoing. <a href="#">PDF Stage 2</a> complete. <a href="#">PDF stage 3</a> complete. Final boundaries will be confirmed once EDPs are approved. As at 30 June 2020, combined impacts on PTWL habitat total 2.34 hectares (see Table 3).
29	Amend the East Molonglo river corridor boundary in stages 2 and 3 respectively with a view to reducing impacts to high and moderate quality PTWL habitat. This process will ensure that connectivity within the river corridor is maintained.	EPSDD (PCS, Strategic Planning)	Progressively, on completion of the final EDPs for stages 2 and 3, respectively.	Ongoing. <a href="#">PDF Stage 2</a> complete. The East Molonglo River Corridor was amended accordingly. The <a href="#">PDF for stage 3</a> is complete. Final boundaries will be confirmed once EDPs are approved.
30	Design the infrastructure that will occur in the river corridor to minimise impacts to high and moderate quality PTWL habitat.	EPSDD & CMTEDD	Prior to the construction of infrastructure.	Ongoing. Design work being progressed for infrastructure projects within the river corridor include the projects described in the response to Commitment 3 (Table 1). There are 18.52 ha of PTWL habitat in the Molonglo development area. The rest is within reserve and therefore is not expected to be impacted. The completed Molonglo Sewer Pedestrian Bridge (Butters Bridge) and Cravens Creek Pond projects were designed and constructed to minimise impacts on PTWL habitat. Refer to the response to Commitment 3 (Table 1) for more details on design work within the river corridor.
31	Develop, implement and independently monitor Construction Environmental Management Plans (CEMPs) to ensure that unforeseen direct or indirect impacts from construction activities within the development area and the river corridor are avoided.	EPSDD & (PCS, Infrastructure Planning) SLA (Molonglo Valley), CMTEDD (Civil Infrastructure Delivery)	Development of the CEMPs prior to construction. Implementation of the CEMPs during construction.	Please see response to commitment 4.
Two offset sites will be established within the strategic assessment area (Kama Nature Reserve and the Molonglo River Park) that will provide for the long-term protection of 66 ha of high and moderate quality PTWL habitat (see Figure 6 of the NES Plan). These areas will be adaptively managed to maintain and enhance the ecological condition of the PTWL habitat that occurs there.				
33	Implement the management plan for the Kama Nature Reserve to provide for the maintenance and enhancement of the ecological condition of all PTWL habitat within the reserve.	EPSDD (PCS)	Commencement on completion of Action 32. Implementation ongoing.	Ongoing. Management is being undertaken in line with the <a href="#">operational plan</a> . Management actions undertaken over 2019-2020 include: <ul style="list-style-type: none"> <li>- St John's wort control;</li> <li>- African Lovegrass control;</li> <li>- woody weed control;</li> <li>- conservation grazing targeting wild oats;</li> <li>- continuation of Striped Legless Lizard translocation trial;</li> <li>- continuation of Kama forb enhancement program;</li> <li>- continuation of habitat rock reinstatement research project; and</li> <li>- continuation of grassland restoration research project testing the effectiveness of ecological burns for restoring grassland habitat.</li> </ul>
34	Establish a buffer outside the Kama Nature Reserve between the reserve and the proposed development area and allow for appropriate uses consistent with nature conservation uses of the reserve. The buffer will be developed to ensure that fire	EPSDD (PCS, Strategic Planning and	As part of the final Planning and Design Framework for stage 3 and confirmed through the approval of estate development plan (subdivision) development applications.	Ongoing. Please see response to commitment 7.

	management is undertaken outside of the Kama Nature Reserve and will provide protection against urban edge effects.	Land Development Projects)		Stage 4 of Whitlam is currently in the concept planning stage and incorporates a buffer consistent with that outlined in the Kama Interface Management Strategy (Capital Ecology 2016)
37	Establish a 20 m buffer around high and moderate quality Pink-tailed Worm Lizard habitat (other than, for example the areas to be impacted by the bridge crossings and strategically placed walking tracks) within the East Molonglo river corridor. Manage these areas to ensure the maintenance of their conservation value. Management measures (as outlined in Section 3) will be incorporated into the management plan for the river corridor.	EPSDD (PCS)	On completion of the final Planning and Design Framework for stage 2 and completion of the Park Concept Plan.	Ongoing. Buffer zones were identified in the <a href="#">Park Concept Plan</a> . Management measures (including establishment of 20m buffers around high and moderate PTWL habitat) are incorporated into the <a href="#">Molonglo River Reserve – Reserve Management Plan</a> .
38	Implement the management plan for the Molonglo River Park to provide for the maintenance and enhancement of the ecological condition of high and moderate quality PTWL habitat within the park.	EPSDD (PCS)	Commencement on completion of Action 36. Implementation ongoing.	Ongoing. Operational plans are being implemented. Other management actions undertaken during 2019-2020 to maintain and enhance the ecological condition of PTWL habitat include: <ul style="list-style-type: none"> <li>- African Lovegrass control;</li> <li>- St John's Wort control;</li> <li>- Chilean needle grass control;</li> <li>- woody weed control;</li> <li>- Serrated tussock control;</li> <li>- willow control;</li> <li>- riparian restoration plantings;</li> <li>- continuation of Box Gum Park for enhancement program;</li> <li>- continuation of the Barrer restoration program;</li> <li>- continuation of the PTWL low impact monitoring research project;</li> <li>- continuation of the PTWL habitat extension research project; and</li> <li>- various public engagement activities, ranging from ranger guided walks to promotional videos, conference field trips and university field trips.</li> </ul>
Continued protection of 28.1 ha of high and moderate quality PTWL habitat within the Lower Molonglo Nature Reserve (see Figure 4 of the NES Plan). These areas will be adaptively managed to maintain the ecological condition of the PTWL habitat that occurs there.				
40	Continued implementation of the Plan of Management for the Lower Molonglo Nature Reserve to provide for the maintenance of the ecological condition of the high and moderate quality PTWL habitat that occurs there (approximately 28.1 ha).	EPSDD	Ongoing.	The following management actions have been undertaken in the Lower Molonglo Nature Reserve: <ul style="list-style-type: none"> <li>- ongoing strategic ecological cattle grazing to reduce exotic grass biomass and reduce fire risk from surrounding fuel loads;</li> <li>- targeted Blackberry (<i>Rubus fruticosus</i>) control;</li> <li>- ongoing monitoring of pest species; and</li> <li>- ongoing strategic grazing and weed control requirements on properties with PTWL habitat that are managed under the Land Management Agreement process.</li> </ul>
Protection of an additional 23.3 ha of high and moderate quality PTWL habitat within the strategic assessment area outside of the development and offset areas (see Figure 4 of the NES Plan). These areas will be adaptively managed to maintain and enhance the ecological condition of the PTWL habitat that occurs there.				
42	Implement management plans for the other areas of high and moderate quality PTWL habitat that occurs within the strategic assessment area and outside of the development and offset areas (approximately 23.3 ha) to provide for the maintenance and enhancement of the ecological condition of the PTWL habitat within these areas.	EPSDD (PCS)	Commencement on completion of Action 41. Implementation ongoing.	Ongoing. Management actions undertaken in 2019-20 include: <ul style="list-style-type: none"> <li>- African lovegrass control;</li> </ul>

				<ul style="list-style-type: none"> <li>- Chilean needle grass control;</li> <li>- woody weed control;</li> <li>- feral pig control;</li> <li>- continuation of the PTWL habitat extension research project; and</li> <li>- continuation of the PTWL low impact monitoring research project.</li> </ul>
Improving and applying the knowledge about the management of PTWL.				
43	Undertake a research project examining the effects on PTWL of disturbance and proximity to urban areas.	EPSDD (PCS)	Commencement within 6 months of endorsement and incorporated into the Planning and Design Framework for both stages 2 and 3.	<p>Stage 1a (Mt Taylor habitat disturbance case study) - complete.</p> <p>Stage 1b - ongoing. The PTWL low-impact monitoring research project commenced in 2014 and will continue until 2020. Early results are promising with the low-impact monitoring method achieving a similar number of detections as traditional methods of surveying the species (i.e. rock rolling).</p> <p>Stage 2a (population monitoring) – ongoing. Population monitoring and habitat condition monitoring is being undertaken as part of Stage 1b and the Molonglo vegetation condition monitoring program.</p> <p>Stage 2b (PTWL translocation trial) – ongoing. Translocation recipient sites are being established.</p> <p>Stage 2c (PTWL habitat restoration) – ongoing. 4ha of habitat restoration has been undertaken since 2014.</p> <ul style="list-style-type: none"> <li>- In 2014, 11 habitat islands were established across the former Blewitts pine plantation. The objective of the restoration works was to improve habitat connectivity between the two genetically distinct populations. Over the past five years, 10 of the 11 habitat islands have been colonized leaving only one island to be colonized before the two populations are effectively reconnected.</li> <li>- Development of a PTWL habitat restoration method in collaboration with the ANU (McDougall, A., R.N. Milner, D.A. Driscoll &amp; A.L. Smith (2016)). Restoration rocks: integrating abiotic and biotic habitat restoration to conserve threatened species and reduce fire fuel load. <i>Biodiversity and Conservation</i> 25 (8), 1529-1542), 3 ha of PTWL habitat restoration has been undertaken within fire management zones adjacent to PTWL habitat. The objective of the restoration works is to reduce fire fuel loads and provide habitat for the PTWL. PTWL have been detected in five of the seven PTWL habitat restoration sites surveyed and a second threatened species, Perunga grasshopper, has also been found in one of the restoration sites.</li> </ul>

### 3.3 Other NES Plan requirements and actions

In addition to the specific MNES related commitments, the NES Plan contains a number of implementation requirements and actions. Table 2 details each action or requirement and provides a status update as at 30 June 2020.

Commitments which have been completed during the 2019-2020 financial year are shaded green. See Appendix A for commitments that were completed in previous years.

**Table 2 Other NES Plan requirements and actions**

No	NES Plan Page Reference	Commitment	Responsible Entity	Comment/Status
1	2	To ensure conservation outcomes and protect MNES adjacent to the development area in the lower Molonglo Valley, the ACT Government will make necessary amendments to the Structure Plan.	EPSDD (Strategic Planning, Territory Plan)	<p>Whilst the commitment refers to the <a href="#">Structure Plan</a>, which is part of the <a href="#">Territory Plan</a>, it will be the Territory Plan (not specifically the Structure Plan) that will be varied in accordance with the <i>Planning and Development Act 2007</i> as development in Molonglo progresses.</p> <p>On 10 August 2012 <a href="#">Technical Amendment to the Territory Plan No. 2012-24</a> came into effect, which includes the applicable provisions arising from the Planning and Design Framework (PDF) for Molonglo Valley Stage 2</p> <p>EPSDD and the former LDA (known as the SLA since 2017) commenced background planning investigations and assessments for Molonglo Valley Stage 3 in 2013-14. These investigations are now being undertaken by EPSDD and informed <a href="#">the PDF for Molonglo Valley Stage 3</a> which was finalised on 27 February 2019.</p> <p>On 23 November 2019, EPSDD released Draft Variation to the Territory Plan 360 (Molonglo River Reserve: changes to public land reserve overlay boundaries and minor zone adjustment) for public consultation. On 22 March 2019, following the consideration of submissions received during the public consultation period, the Draft Variation was referred to the ACT Legislative Assembly's Standing Committee on Planning and Urban Renewal. The Standing Committee released their report on the Draft Variation. The Draft Variation to the Territory Plan No 360 was approved in February 2020 and was <a href="#">notified on the Legislation Register</a>.</p>
3	9	<p>Infrastructure within the river corridor comprises the following activities and will be staged to be most cost effectively developed (in the following order):</p> <ul style="list-style-type: none"> <li>• John Gorton Drive which includes the construction of dual bridges crossing the Molonglo River;</li> <li>• East-West Arterial Road bridge crossing of the Molonglo River;</li> <li>• Water quality control ponds; water mains; sewer mains and sewer pump stations; and</li> <li>• A combined sewer / pedestrian / cycle bridge.</li> </ul>	EPSDD (PCS, Infrastructure Planning), TCCS, CMTEDD (Civil Infrastructure Delivery), SLA (Molonglo Valley)	<p>On 27 April 2012, the ACT Government advised the Commonwealth that the ACT Government required a change to the order of this infrastructure to effectively manage the sequencing of land release.</p> <p>The following infrastructure has been completed within the River Corridor:</p> <ul style="list-style-type: none"> <li>- Sewer Pedestrian Bridge (Butters Bridge) over the Molonglo River, and associated sewer main approaches; and</li> <li>- Cravens Creek Pond.</li> </ul> <p>The East West Arterial has been constructed west of John Gorton Drive for approximately 1.1 km.</p> <p>Two sections of John Gorton Drive construction have been recently completed in Molonglo 3. The first section (JGD3A) is south from William Hovel Drive and has been constructed for a distance of approximately 900m. The next 500m of John Gorton Drive (JGD3B) is also complete and opened mid-2020. The final section of John Gorton Drive includes a dual carriageway bridge crossing of the Molonglo River and another 1.7km of dual carriageway road approaches. The early design stage for this is complete and an impact track development application is expected to be lodged shortly. A 'Detail Design and Construction' package for this final stage will be tendered in mid-2021, subject to budget funding being approved.</p> <p>In 2018-19 EPSDD completed construction of minor recreation facilities in the River Reserve at Barrer Hill, opposite to Coombs including a pedestrian trail, signage and low impact lookouts. These facilities were constructed using low environmental impact methods and will help to control pedestrian movement through the reserve and away from areas of high conservation value.</p> <p>In 2018-19 EPSDD progressed design of the first of two special purpose reserves, Namarag, that will manage access to the Molonglo River Reserve and provide focused areas for recreation and river access.</p> <p>In 2019-2020 SLA took responsibility for the design and construction of four Odour Control Units attached to the Molonglo Valley Interceptor Sewer. These units are located both adjacent to and within the river corridor and have been staged to coincide with the occupation of Whitlam and Denman Prospect 2.</p>

No	NES Plan Page Reference	Commitment	Responsible Entity	Comment/Status
4	10	Variations to the East Molonglo development boundary to minimise the impact on MNES values. A particular focus of this is the reduction of impacts on moderate and high-quality Pink-tailed Worm-lizard habitat.	EPSDD (Land Development Projects) & SLA (Molonglo Valley)	<p>Changes to the river corridor boundary occurred after the Molonglo Valley Stage 2 PDF was approved in 2012.</p> <p>EPSDD and the former LDA (known as the SLA since 2017) commenced background planning investigations for Molonglo Valley Stage 3 in 2013-14. These investigations are now being undertaken by EPSDD and have informed the preparation of the PDF, which has been finalised. The buffer to Kama Nature Reserve was considered in the Molonglo Stage 3 Urban Development project Environmental Impact Statement Exemption (s211 <i>Planning and Development ACT 2007</i>). The exemption included a number of conditions for development approval including that the treatment and boundary to Kama Nature Reserve must be consistent with the recommendations of <a href="#">the Kama Interface Management Strategy</a> (Capital Ecology 2016). This condition has been incorporated into and represented in the <a href="#">PDF for Stage 3</a>, which was approved in February 2019.</p> <p>On 23 November 2018, EPSDD released Draft Variation to the Territory Plan 360 (Molonglo River Reserve: changes to public land reserve overlay boundaries and minor zone adjustment) for public consultation. On 22 March 2019, following the consideration of submissions received during the public consultation period, the Draft Variation was referred to the ACT Legislative Assembly's Standing Committee on Planning and Urban Renewal. The Standing Committee released their report on the Draft Variation. The Draft Variation to the Territory Plan No 360 was approved in February 2020 and was <a href="#">notified on the Legislation Register</a>.</p>
5	10	<p>Designing infrastructure that will occur in the river corridor to avoid or minimise impacts to MNES. This process includes:</p> <ul style="list-style-type: none"> <li>re-aligning the location of the major bridges (as compared to the original location proposed in the Molonglo Structure Plan) to minimise impacts on moderate and high-quality Pink-tailed Worm Lizard habitat; and</li> <li>aligning other infrastructure to avoid moderate and high-quality Pink-tailed Worm Lizard habitat and Box-Gum Woodland where this can be achieved.</li> </ul>	EPSDD (PCS, Infrastructure Planning), TCCS, CMTEDD (Civil Infrastructure Delivery), SLA (Molonglo Valley).	<p>Ongoing. Please see response to Table 1- Commitment 3.</p> <p>In 2019-2020 SLA took responsibility for the design and construction of four Odour Control Units attached to the Molonglo Valley Interceptor Sewer. These units are located both adjacent to and within the river corridor and have been staged to coincide with the occupation of Whitlam and Denman Prospect 2.</p>
8	11, 35-36	The ACT Government will ensure that all construction activities (whether in the urban area or in the river corridor) will be subject to construction environmental management plans (CEMPs). These CEMPs will help to ensure that unnecessary impacts from construction (e.g. through the uncontrolled movement of machinery) are avoided. A detailed description of the content of CEMPs is provided in Section 4 of the NES Plan.	EPSDD (PCS) SLA (Molonglo Valley), CMTEDD (Civil Infrastructure Delivery)	Ongoing. Please see response to Table 1- Commitment 4
9	12	<p>Within the strategic assessment area fire management will be aimed at the protection of both built assets and MNES values. This will be achieved through the identification of appropriate asset protection zones and the application of hazard reduction techniques that will both:</p> <ul style="list-style-type: none"> <li>ensure that the standards for fuel loads in the SBMP are met; and</li> <li>protect MNES values through the use of sympathetic management techniques.</li> </ul>	EPSDD (PCS) ESA, SLA (Molonglo Valley)	Ongoing. Asset protection zones have been identified as part of the operational plan for the river corridor and the Bushfire Risk Strategy prepared by the SLA. ESA and the Fire Management Unit of TCCS support the fire management plan, which sets out the management requirements both within and immediately outside the future urban development boundary in Denman Prospect, taking into account BGW. In addition, controls for asset protection and management will be included in EDPs.
12	18	The ACT Government, as the proponent, will ensure that all development concerning MNES in the Strategic Assessment area is incorporated into any future development application and associated documentation to ensure any Commonwealth requirements are reflected in the decision by the Environment, Planning and Sustainable Development Directorate.	EPSDD (Planning Delivery)	Ongoing – for consideration/application at development assessment stage.
13	41	<p>The ACT Government will monitor and report annually to the public on the implementation of the NES Plan.</p> <p>An annual report highlighting the conservation outcomes achieved in the previous year will be published by the ACT Government and provided to the Department of Agriculture, Water and the Environment. The Report will include the monitoring results on the condition of the MNES, conservation outcomes (as listed in Section 4) and the outcomes of enhancement projects.</p>	EPSDD (Planning Delivery)	Ongoing. To be finalised by the end of November each year.

No	NES Plan Page Reference	Commitment	Responsible Entity	Comment/Status
15	44	The NES Plan and its associated actions will be audited by an independent, third party expert every five years, for a 30-year period.  The audit reports are to be provided to the Department of Agriculture, Water and the Environment for their consideration.	EPSDD	The Commissioner for Sustainability and the Environment completed the first <a href="#">Independent Audit of the NES Plan</a> in April 2018.
16	44	Appoint an independent, third party auditor and develop a customised audit protocol to ensure that: <ul style="list-style-type: none"> <li>commitments made by the ACT Government in the NES Plan are being adhered to; and</li> <li>conservation outcomes for the MNES are being achieved.</li> </ul>	EPSDD	As above. Required every 5 years. The next independent audit is due on 31 May 2022.
17	44	The Treasury Directorate will ensure that commitments and actions in the NES Plan are funded.	CMTEDD	Ongoing.  PCS completed two Capital Works projects in 2018-19 in the Molonglo River Reserve delivering on NES Plan actions. These programs saw the completion of the Barrer Restoration project (a key NES action) and other NES actions related to research, restoration and reserve establishment.  In the 2018-19 ACT Budget \$3.182M was allocated over four years for the Capital Works project Establishing the Molonglo River Reserve to be delivered by PCS. This project will continue to protect native species and habitats in the Molonglo River Reserve (the Reserve) through ecological conservation works. Importantly, it will deliver detailed design of the first of two special purpose reserves in the Reserve.  In the 2019-20 ACT Budget \$7.165M was allocated over four years for the Capital Works project <i>Remediating the former Molonglo sewerage treatment facility</i> to be delivered by PCS. This project will deliver the construction of the first of the two special purpose reserves in the Reserve. This will be a focus area for residents and visitors to manage access into the Reserve protecting other areas with sensitive ecological values.

### 3.4 Corrections to information and data

#### Molonglo River Reserve Boundary Adjustments

The NES Plan's primary aim is to protect MNES within the Molonglo Valley to minimise impacts and maximise conservation outcomes. Conservation outcome (actions 2 and 29) require the East Molonglo river corridor boundary in stages 2 and 3 to be amended with a view to reducing impacts to BGW and PTWL habitat and ensuring connectivity within the river corridor is maintained.

The [Planning and Design Framework](#) (2019), which was required by the NES Plan (section 3.2) incorporates NES actions and commitments. The PDF:

- illustrates the boundary line between the Molonglo Stage 3 development area and the NES Offset area of the river corridor on the northern (right bank) side of the Molonglo River;
- recognises NES Plan conservation outcomes, action numbers 2 and 29 requiring amendment of the river corridor boundary;
- requires the interface between Molonglo Stage 3 and the Molonglo River Reserve to be consistent with the Molonglo River Reserve Management Plan; and
- notes that as development proceeds and practical issues arise in determining the urban edge, there may be a need to review the boundary to the Molonglo River Reserve.

Where the land is unleased Territory land and the change is consistent with both the apparent intent of the original boundary line and the objective for the Territory Plan zone, this may be achieved by making a technical amendment to the Territory Plan, under the *Planning and Development Act 2007*. Such changes in boundaries must also be consistent with the objectives of the Molonglo River Reserve Management Plan and must not compromise the capacity to protect threatened species and communities and meet the intent of the NES Plan.

The [Molonglo River Reserve \(Reserve Management Plan\)](#) (RMP) (2019) is a disallowable instrument made under the *Nature Conservation Act 2014*. The long-term objectives of the Molonglo River Reserve RMP include a policy which recognises that future changes in boundaries and management zones must be consistent with the Molonglo River Reserve RMP and must not compromise the capacity to protect threatened species and communities.

Similarly to the PDF, the Molonglo River Reserve RMP recognises that reserve boundaries of unleased Territory land can be amended under the *Planning and Development Act 2007* when the change is consistent with the intent of the original boundary. Minor technical variations may occur as a result of Estate Development Plan approvals where minor practical changes are needed to achieve a practical urban edge. Changes to boundaries must be consistent with the objectives of the Molonglo River Reserve RMP and must not compromise the capacity to protect threatened species and communities.

The Molonglo River Reserve RMP includes actions agreed in the NES Plan to ensure protection of threatened species and communities. This includes reiterating the specific NES Plan action to *'amend the East Molonglo river corridor boundary in stages 2 and 3 respectively with a view to reducing impacts to high and moderate quality PTWL habitat. This process will ensure that connectivity within the river corridor is maintained.'*

[Territory Plan Variation 360 – Molonglo River Reserve](#) (2020) was the legislative mechanism which formally varied the public land reserve overlay boundary of the Molonglo NES Plan strategic assessment area. Territory Plan Variation 360 was prepared in response to the request of the Conservator of Flora and Fauna to amend the Molonglo River Reserve public land reserve overlay boundary for the area of the reserve. This is consistent with the

requirement of the NES Plan and the Molonglo River Reserve RMP to amend the boundary to protect MNES within the strategic assessment area.

As a result, the new river corridor boundary (see Figure 4, below) increases the Molonglo River Reserve area from 489.66 hectares to 523.73 hectares with an increase of 1.01 hectares of box gum woodland and 0.22 hectares of pink tailed worm lizard habitat within the reserve area. The boundary changes have also resulted in an increase in the area of PTWL habitat located in development areas, from 18.18 hectares to 18.52 hectares. These figures are consistent with the clearance budgets in the NES Plan.

Minor technical variations may be required to the reserve boundary as EDPs for the remaining areas are finalised. These variations will be to deal with practical issues which arise in determining the urban edge. The assessment of EDPs includes an assessment of any biodiversity impacts and compliance with the NES Plan to ensure conservation outcomes are maintained.

### 3.5 Impacts on MNES

The NES Plan specifies limits for impacts on MNES from any development within the Molonglo Valley Strategic Assessment area. The following limits apply:

- a maximum of 110 ha of BGW can be impacted;
- a maximum of 27 ha of high and moderate quality PTWL habitat can be impacted\*; and
- no direct or indirect impact to Natural Temperate Grassland is allowed.

*\*There is 18.52 ha of PTWL habitat present in development areas. The remainder of the PTWL habitat occurs in nature reserves. Therefore, although the maximum total budget for PTWL habitat is 27 ha, PTWL impacts are expected to be limited to the development area (18.52ha).*

The NES Plan does not specify an allowable impact on the Superb Parrot and Swift Parrot.

Table 3 summarises the impacts on MNES from all developments completed in the assessment area since the NES Plan was endorsed as well as projects that were being progressed in 2019-20. Figures 2 and 3 show the location and areas of BGW and PTWL that have been cleared.

**Table 3 Impacts on Matters of National Environmental Significance (ha)**

<b>Impacts on Matters of National Environmental Significance (ha)</b>			
	<b>Pink-tailed Worm Lizard (limit 27 ha of high and moderate quality habitat)</b>	<b>Box Gum Woodland (limit 110 ha)</b>	<b>Natural Temperate Grassland (no impact)</b>
<b>Total cleared at 30 June 2020</b>	2.34 ha	11.18 ha	0 ha
<b>Available balance</b>	24.66 ha	98.82 ha	0 ha



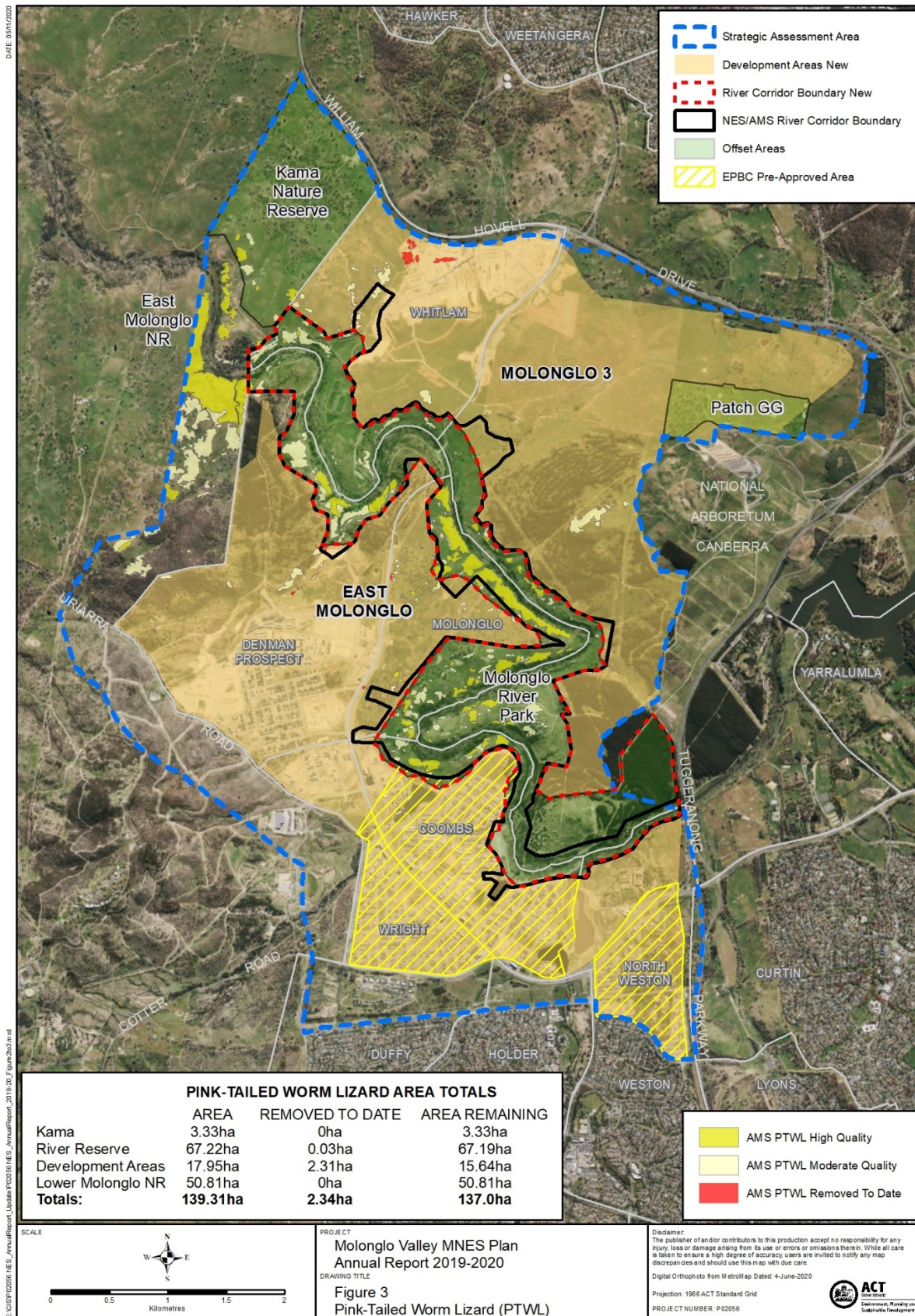


Figure 3 PTWL areas that have been cleared to date

### **3.6 Expert Panel Review Report**

On 30 October 2018 the first expert panel report<sup>1</sup> (the [Molonglo Valley vegetation condition monitoring report 2013-2017](#)) was submitted to the Commonwealth. The next review will be in 2023.

### **3.7 Independent Audit**

The Commissioner for Sustainability and the Environment completed the first [independent audit](#) of the NES Plan in April 2018. Four corrective actions were issued and were delivered during the 2018-2019FY. The next independent audit will be in May 2022.

## **4 Deviation or non-compliance**

Compliant for 2019-2020 period.

---

<sup>1</sup> Required by Molonglo NES Plan commitment no.15 (page 44)

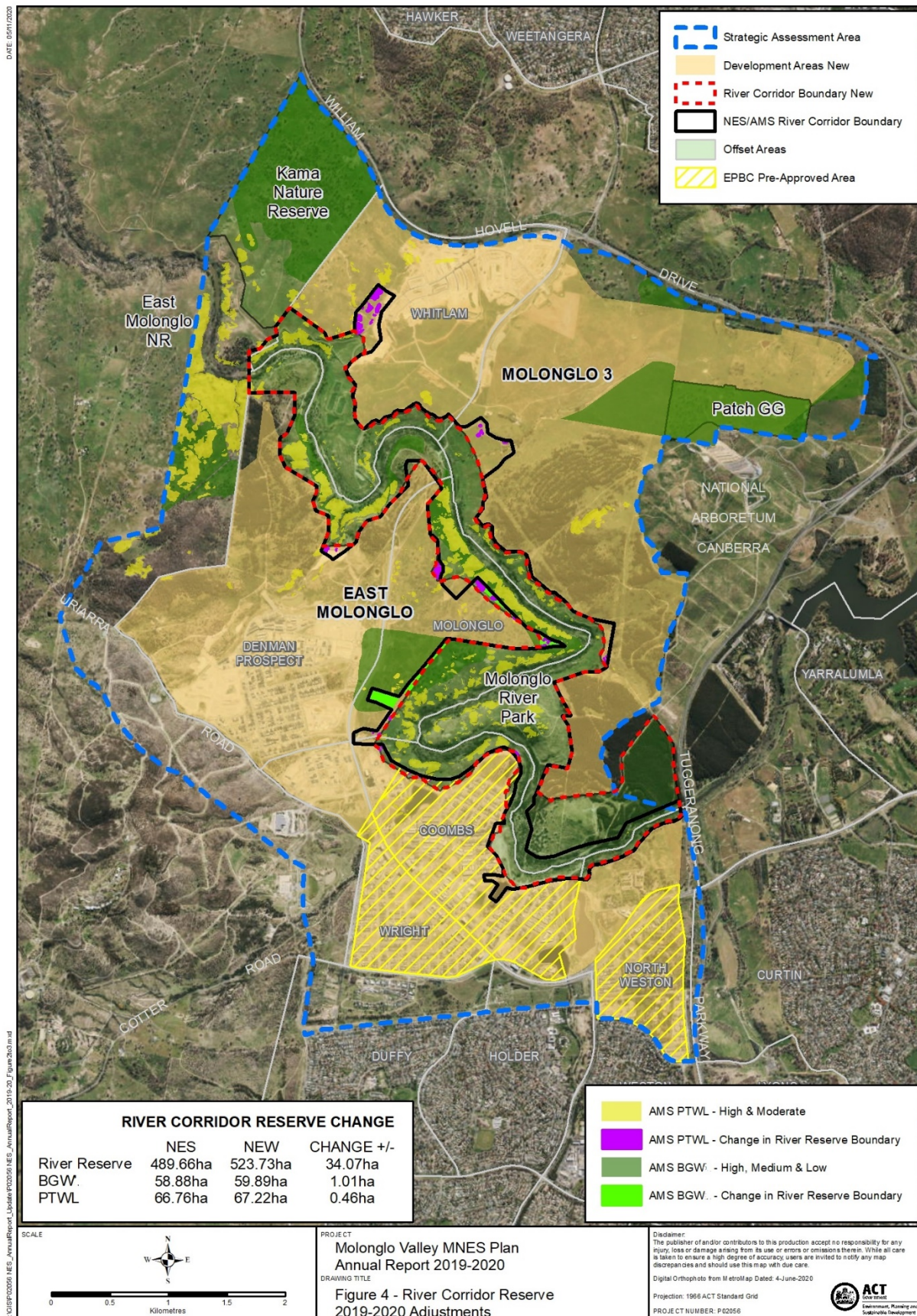


Figure 4: Molonglo River Corridor Boundary Adjustments

Appendix A – Previously completed commitments

Table A, Completed commitments from Table 1: Commitments, delivery and timing

Year Completed	NES Plan Ref	Action	Responsible Entity	Timing	Current status
<b>Actions to achieve the conservation outcomes for Box Gum Woodland</b>					
Three offset sites will be established within the strategic assessment area (Kama Nature Reserve, Molonglo River Park, Patch GG) that will provide for the long-term protection of 234 ha of Box-Gum Woodland (see Figure 6 of NES Plan). The three offset sites will be adaptively managed to maintain and enhance the ecological condition of the Box-Gum Woodland that occurs there.					
2015	5	Develop a management plan for the Kama Nature Reserve to provide for the maintenance and enhancement of the ecological condition of Box-Gum Woodland within the reserve (approximately 117 ha).	EPSDD (PCS)	Development prior to the commencement of the construction of Sewer 3 East or within 2 years and 6 months of endorsement of the NES Plan; whichever occurs first.	<b>Complete.</b> An <a href="#">Operational Plan for Kama Nature Reserve</a> was completed in 2015. Note: A statutory Reserve Management Plan is in preparation for the reserve. Management plans for specific areas within the reserve have been called Operational Plans to avoid confusion with the statutory Management Plan for the entire reserve. Therefore, this commitment refers to the completion of an Operational Plan for the specific area of Kama Nature Reserve.
August 2012	8	Develop a Park Concept Plan for the “Molonglo River Park” which will occur along the East Molonglo river corridor. This Plan will establish management zones within the Park, specifically identifying areas to be designated for conservation as well as identifying recreation areas and resolving public access. A key focus of this plan will be the protection of Box-Gum Woodland.	EPSDD	Development prior to the commencement of construction of John Gorton Drive Stage 2A or within 1 year of endorsement of the NES Plan; whichever occurs first.	<b>Complete.</b> The <a href="#">Molonglo River Corridor Concept Plan</a> prepared by EPSDD was endorsed on 28 August 2012.
June 2014	9	Develop a management plan for the Molonglo River Park to provide for the maintenance and enhancement of the ecological condition of Box-Gum Woodland within the park (approximately 73 ha).	EPSDD (PCS)	Development prior to the commencement of the construction of the Sewer 3 East or within 2 years and 6 months of endorsement of the NES Plan; whichever occurs first.	<b>Complete.</b> An <a href="#">Operational Plan for Molonglo River Park</a> was completed in June 2014.
February 2014	11	Establish Patch GG as an offset site by incorporating the area into the National Arboretum.	EPSDD	Established within 6 months of endorsement of the NES Plan.	<b>Complete.</b> On 22 January 2013 the ACT Government purchased ‘Glenloch’ from its former long-term lessees. In 2014 Patch GG was transferred for incorporation into the National Arboretum to enable management as an offset site.
August 2014	12	Develop a management plan for Patch GG to provide for the maintenance and enhancement of the ecological condition of Box-Gum Woodland within the park (approximately 44 ha).	EPSDD (PCS)/TCCS	Development prior to the commencement of the construction of Sewer 3 East or within 2 years and 6 months of endorsement of the NES Plan, whichever occurs first.	<b>Complete.</b> Patch GG has been incorporated into the National Arboretum. An <a href="#">Operational Plan for Patch GG</a> was completed in June 2014.
Adaptively manage 28 ha of Box-Gum Woodland within the strategic assessment area to maintain and enhance its ecological condition. This will be made up of patches C, H and N.					
2018	14	Develop management plans for Box-Gum Woodland patches C, H, and N (see Figure 3 of the NES Plan) to provide for the maintenance and enhancement of the ecological condition of Box-Gum Woodland within these areas.	EPSDD (PCS)	Development prior to the completion of the final PDF for stage 3.	<b>Complete.</b> An Operational Plan for patches C and H was completed in December 2018. An Operational Plan for Patch N was developed in 2014, as part of the Arboretum Woodland Conservation Area. The land has been under the custodianship of the LDA. PCS are now managing Patch N and Land custodianship is to be transferred to PCS in 2018-19.
Adaptively manage 45.4 ha of Box-Gum Woodland within the strategic assessment area to maintain its ecological condition. This will be made up of patches I, L, M and P.					
December 2018	16	Develop management plans for Box-Gum Woodland patches I, L, M and P (see Figure 3 of the NES Plan) to provide for the maintenance of the ecological condition of Box-Gum Woodland within these areas.	EPSDD (PCS)	Development after completion of Adaptive Management Strategy and within 2 years and 6 months of endorsement of the NES Plan.	<b>Complete.</b> An Operational Plan for patch P was completed in December 2018 Patches I, L and M are managed under a rural lease with a Land Management Agreement.

Maintenance and enhancement of the Box-Gum Woodland that occurs within the West Molonglo component of the strategic assessment area.					
N/A	21	<p>Manage the Box-Gum Woodland that occurs in West Molonglo in accordance with the terms of a Land Management Agreement (LMA). LMAs are required by Part 9.7 of the <i>Planning and Development Act 2007</i> for all non-urban leases. The LMA covering the BGW in West Molonglo contains a Land Action Plan which ensures that:</p> <ul style="list-style-type: none"> <li>• the ecological functioning and integrity of BGW on the lease is retained and improved;</li> <li>• the extent and character of the BGW is preserved; and</li> <li>• there is an Action Plan which details the activities, timeframes and performance measures put in place to ensure the conservation outcomes are met.</li> </ul>	EPSDD (PCS)	Ongoing.	Not required. See Commitment 22 below.
October 2015	22	West Molonglo is zoned broadacre and is not part of the ACT Government's current land release program. In the event that West Molonglo is developed in the future for broadacre uses or residential development then, subject to confirmatory ecological assessment of Box-Gum Woodland, the area of EPBC Act Box-Gum Woodland that occurs there will be set aside as a Nature Reserve.	EPSDD	If required the Nature Reserve will be established prior to construction in West Molonglo commencing.	<p><b>Complete.</b></p> <p>Box-Gum Woodland in West Molonglo was set aside as nature reserve through Territory Plan Variation 351 approved on 23 October 2015.</p> <p>The area of Box-Gum Woodland originally mapped for the strategic assessment was refined through an ecological assessment undertaken by David Hogg Pty Ltd in 2013. The current reserve boundaries were set based on the later ecological assessment.</p>
Improving and applying the knowledge about the management of Box-Gum Woodland.					
2019	23	Establish and manage an off-site restoration project, as an indirect offset, for Box-Gum Woodland.	EPSDD (PCS)	Before development commences in Stage 2.	<p><b>Complete.</b></p> <p>The use of Barrer Park which is on site was supported by the Commonwealth as meeting this commitment. EPSDD started BGW restoration work in 2014. A total of 15,607 plants, 1,505 trees and shrubs and 14,102 groundcovers were planted.</p> <p>EPSDD completed Stage 3 of the BGW restoration in 2016-17. As part of Stage 3, ten vertical habitat structures, 400 CWD logs and 80 tonnes of surface rock was placed into the restoration area to provide habitat for threatened and non-threatened BGW species.</p> <p>The vertical habitat structures project is an innovative restoration initiative currently being trialled in the Molonglo River Reserve. The project installed a total of ten habitat structures, including 5 utility poles and 5 relocated mature trees, enriched with carved hollows and artificial bark providing habitat for invertebrate, bird, bat and marsupial species.</p> <p>In collaboration with ANU researchers at the Fenner School of Environment and Society, this study will shed light on the effectiveness of this restoration method for biodiversity in modified landscapes.</p> <p>In 2017-18 visitor infrastructure including signage, trail upgrades, seats and lookouts were completed at Barrer Hill to inform visitors of the values in the area and manage access and recreational use to this important conservation site. A number of grassland restoration scrape sites were also completed, totalling 0.3 hectares.</p> <p>In 2019, an 11<sup>th</sup> vertical habitat sculpture was constructed from a salvaged 400 year old yellow box remnant and resurrected as a habitat sculpture for wildlife and a focal point for community engagement and education. An additional 500 plants were planted around this structure, including as part of a community planting day and Ministerial launch. In collaboration with the ANU, a manuscript detailing the findings of this research was published in <i>Biological Conservation</i> <a href="https://www.sciencedirect.com/science/article/abs/pii/S0006320719300461">https://www.sciencedirect.com/science/article/abs/pii/S0006320719300461</a></p> <p>In addition, an <a href="#">interactive web interface</a> was launched in partnership with the ANU, which collates remote camera data collected from the vertical structures allowing members of the public to access and tag information <a href="http://molonglo.life/#/">molonglo.life/#/</a></p>

Year completed	Actions to achieve the conservation outcomes for Natural Temperate Grassland				
Adaptive management of the Natural Temperate Grassland that occurs within the Kama Nature Reserve to maintain and enhance its ecological condition.					
2015	25	Develop a management plan for the Kama Nature Reserve to provide for the maintenance and enhancement of the ecological condition of Natural Temperate Grassland within the reserve.	EPSDD (PCS)	Development prior to the commencement of the construction of the Sewer 3 East or within 2 years and 6 months of endorsement of the NES Plan; whichever occurs first.	<b>Complete.</b> Please see response to commitment 5. Operational Plan complete.
Actions to achieve the conservation outcomes for Pink-tailed Worm Lizard					
Two offset sites will be established within the strategic assessment area (Kama Nature Reserve and the Molonglo River Park) that will provide for the long-term protection of 66 ha of high and moderate quality PTWL habitat (see Figure 6 of the NES Plan). These areas will be adaptively managed to maintain and enhance the ecological condition of the PTWL habitat that occurs there.					
2015	32	Develop a management plan for the Kama Nature Reserve to provide for the maintenance and enhancement of the ecological condition of all PTWL habitat within the reserve (approximately 6 ha which includes 3.33 ha of high and moderate quality habitat).	EPSDD (PCS)	Development prior to the commencement of the construction of the Sewer 3 East or within 2 years and 6 months of endorsement of the NES Plan; whichever occurs first.	<b>Complete.</b> Please see response to commitment 5.
August 2012	35	Develop a Park Concept Plan for the "Molonglo River Park" which will occur along the East Molonglo river corridor. This Plan will establish management zones within the Park, specifically identifying areas to be designated for conservation as well as identifying recreation areas and resolving public access. A key focus of this plan will be the protection of high and moderate quality PTWL habitat.	EPSDD	Development prior to the commencement of construction of John Gorton Drive Stage 2A or within 1 year of endorsement of the NES Plan; whichever occurs first.	<b>Complete.</b> The Molonglo River Corridor Concept Plan prepared by EPSDD was endorsed on 28 August 2012.
June 2014	36	Develop a management plan for the Molonglo River Park to provide for the maintenance and enhancement of the ecological condition of high and moderate quality PTWL habitat within the park (approximately 62 ha).	EPSDD (PCS)	Development prior to the commencement of the construction of the Sewer 3 East or within 2 years and 6 months of endorsement of the NES Plan; whichever occurs first.	<b>Complete.</b> Please see response to commitment 9.
June 2012	39	Register a disallowable instrument under the <i>Domestic Animals Act 2000</i> to effect a cat containment policy for the Molonglo area.	TCCS & EPSDD (PCS)	30 June 2012	<b>Complete.</b> <a href="#">DI-2015-58</a>
Protection of an additional 23.3 ha of high and moderate quality PTWL habitat within the strategic assessment area outside of the development and offset areas (see Figure 4 of the NES Plan). These areas will be adaptively managed to maintain and enhance the ecological condition of the PTWL habitat that occurs there.					
April 2018	41	Develop management plans for the other areas of high and moderate quality PTWL habitat that occurs within the strategic assessment area and outside of the development and offset areas (approximately 23.3 ha) to provide for the maintenance and enhancement of the ecological condition of the PTWL habitat within these areas.	EPSDD (PCS)	Development after completion of the Adaptive Management Strategy and within 2 years and 6 months of endorsement of the NES Plan.	<b>Complete</b> The Operation Plan for the PTWL in the Molonglo River Reserve was finalised in April 2018.
Improving and applying the knowledge about the management of PTWL.					
December 2008	44	Amend the development boundary, adjacent to high and moderate quality PTWL habitat on the western edge to avoid: <ul style="list-style-type: none"> <li>• direct impact from bushfire management – the Outer Asset Protection Zone (OAPZ) and Inner Asset Protection Zones (IAPZ) will be between the PTWL habitat and the development boundary; and</li> <li>• indirect impacts from urban development.</li> </ul>	EPSDD	Boundary amendment will be incorporated immediately into the draft Planning and Design Framework for stage 2. The boundary amendment will be prescribed by a Territory Plan amendment, post completion of the Estate Development Plan (EDP) for stage 2.	<b>Complete.</b> Stage 2 development boundaries were set by the Territory Plan Variation 281. The development boundary on the north western edge has been adjusted to avoid impacts on the high and moderate quality PTWL habitat.

## Other NES Plan requirements and actions

Table B, Completed actions from Table 2: Other NES Plan requirements and actions

Year Completed	No	NES Plan Page Reference	Commitment	Responsible Entity	Comment/Status
February 2020	1	2	To ensure conservation outcomes and protect MNES adjacent to the development area in the lower Molonglo Valley, the ACT Government will make necessary amendments to the Structure Plan.	EPSDD (Strategic Planning, Territory Plan)	Whilst the commitment refers to the <a href="#">Structure Plan</a> , which is part of the <a href="#">Territory Plan</a> , it will be the Territory Plan (not specifically the Structure Plan) that will be varied in accordance with the <i>Planning and Development Act 2007</i> as development in Molonglo progresses. On 10 August 2012 <a href="#">Technical Amendment to the Territory Plan No. 2012-24</a> came into effect, which includes the applicable provisions arising from the Planning and Design Framework (PDF) for Molonglo Valley Stage 2 EPSDD and the former LDA (known as the SLA since 2017) commenced background planning investigations and assessments for Molonglo Valley Stage 3 in 2013-14. These investigations are now being undertaken by EPSDD and informed <a href="#">the PDF for Molonglo Valley Stage 3</a> which was finalised on 27 February 2019. On 23 November 2019, EPSDD released Draft Variation to the Territory Plan 360 (Molonglo River Reserve: changes to public land reserve overlay boundaries and minor zone adjustment) for public consultation. On 22 March 2019, following the consideration of submissions received during the public consultation period, the Draft Variation was referred to the ACT Legislative Assembly's Standing Committee on Planning and Urban Renewal. The Standing Committee released their report on the Draft Variation. The Draft Variation to the Territory Plan No 360 was approved in February 2020 and was <a href="#">notified on the Legislation Register</a> .
December 2011	2	3	Following endorsement of the NES Plan under the EPBC Act, actions (or classes of actions) that will occur to implement the endorsed NES Plan may be approved by the Minister.	EPSDD	Complete. Commonwealth Minister provided approval on 20 December 2011. The approval has effect until 31 December 2041.
February 2020	4	10	Variations to the East Molonglo development boundary to minimise the impact on MNES values. A particular focus of this is the reduction of impacts on moderate and high-quality Pink-tailed Worm-lizard habitat.	EPSDD (Land Development Projects) & SLA (Molonglo Valley)	Changes to the river corridor boundary occurred after the Molonglo Valley Stage 2 PDF was approved in 2012. EPSDD and the former LDA (known as the SLA since 2017) commenced background planning investigations for Molonglo Valley Stage 3 in 2013-14. These investigations are now being undertaken by EPSDD and have informed the preparation of the PDF, which has been finalised. The buffer to Kama Nature Reserve was considered in the Molonglo Stage 3 Urban Development project environmental impact statement exemption (s 211 <i>Planning and Development Act 1999</i> ). The exemption included a number of conditions for development approval including that the treatment and boundary to Kama Nature Reserve must be consistent with the recommendations of <a href="#">the Kama Interface Management Strategy</a> (Capital Ecology 2016). This condition has been incorporated into and represented in the <a href="#">PDF for Stage 3</a> , which was approved in February 2019. On 23 November 2018, EPSDD released Draft Variation to the Territory Plan 360 (Molonglo River Reserve: changes to public land reserve overlay boundaries and minor zone adjustment) for public consultation. On 22 March 2019, following the consideration of submissions received during the public consultation period, the Draft Variation was referred to the ACT Legislative Assembly's Standing Committee on Planning and Urban Renewal. The Standing Committee released their report on the Draft Variation. The Draft Variation to the Territory Plan No 360 was approved in February 2020 and was <a href="#">notified on the Legislation Register</a> .
February 2018	6	10	A design principle to maintain ecological values within the East Molonglo development area where possible.		<b>Complete.</b> Design principles adopted by the Territory and incorporated in contracts for design and construction projects.
July 2016	7	10	A commitment to avoid impacts on MNES within West Molonglo.		<b>Complete.</b> MNES in West Molonglo, referred to as West Belconnen were considered through the variation to the Territory Plan and amendment to the National Capital Plan. This area is included in the West Belconnen Strategic Assessment.
June 2017	10	17	It is also important to note that under Division 3.3 of the <i>Nature Conservation Act 1980</i> , Pink-tailed Worm Lizard has been declared a vulnerable species and Natural Temperate Grassland and Box Gum Woodland are declared endangered communities. The effect of these statutory declarations is that these species and communities need to be managed in accordance with a prescribed Action Plan, prepared by the Conservator for Flora and Fauna.	EPSDD	<b>Complete</b> The <i>Nature Conservation Act 1980</i> has been amended to reflect this requirement. An Action Plan for the Pink-tailed worm-lizard has been completed. <a href="https://www.environment.act.gov.au/_data/assets/pdf_file/0008/1068281/Pink-tailed-Worm-lizard-Aprasia-parapulchella.pdf">https://www.environment.act.gov.au/_data/assets/pdf_file/0008/1068281/Pink-tailed-Worm-lizard-Aprasia-parapulchella.pdf</a>
February 2019	11	18	Construction in the Molonglo Valley stage 2 and stage 3 will not commence before completion of the respective Planning and Design Frameworks for both stages 2 and 3. The final Planning and Design Frameworks will incorporate NES actions and commitments.	EPSDD (Planning Delivery and Strategic Planning))	Completed. The PDF for Molonglo Valley Stage 2 prepared by EPSDD was approved on 17 April 2012. The interim Limited Area PDF for Molonglo Valley stage 3 prepared by EPSDD was approved in March 2017. The PDF for Molonglo Valley Stage 3 prepared by EPSDD was approved on 27 February 2019. The framework supersedes the March 2017 Molonglo Valley Stage 3 Interim Limited Area Planning and Design Framework, which permitted the construction of certain capital works items to support future land release in Molonglo Stage 3.

August 2013	14	41,42,43	Develop an Adaptive Management Strategy to set out the framework for achieving the NES Plan's commitments through monitoring, evaluation, experimental design, reporting, auditing and continuous improvement processes. The Strategy will inform the content and timing of specific management plans and actions to ensure a consistent, integrated and efficient application of adaptive management principles and practices to achieve long term conservation outcomes for MNES. The approved Adaptive Management Strategy will be submitted for approval by the Minister (Commonwealth) or delegate.		<b>Complete.</b> The AMS was endorsed by the Commonwealth Government on 7 August 2013.
-------------	----	----------	---	--	---

## Appendix B – Publicly available documents referenced in the NES Plan annual report

Name	Link	Year published
Planning and Development (Plan Variation No 360) Approval 2020, NI2020-82	<a href="https://www.legislation.act.gov.au/View/ni/2020-82/20200211-73234/PDF/2020-82.PDF">https://www.legislation.act.gov.au/View/ni/2020-82/20200211-73234/PDF/2020-82.PDF</a>	2020
Molonglo Valley Stage 3 Planning and Design Framework	<a href="https://www.planning.act.gov.au/_data/assets/pdf_file/0003/1348005/Molonglo-Planning-and-Design-Framework-Stage3-ACCESS.pdf">https://www.planning.act.gov.au/_data/assets/pdf_file/0003/1348005/Molonglo-Planning-and-Design-Framework-Stage3-ACCESS.pdf</a>	2019
Molonglo River Reserve – Reserve Management Plan	<a href="https://www.legislation.act.gov.au/View/di/2019-192/current/PDF/2019-192.PDF">https://www.legislation.act.gov.au/View/di/2019-192/current/PDF/2019-192.PDF</a>	2019
Molonglo Valley Vegetation Condition Monitoring Report (expert panel report)	<a href="https://www.planning.act.gov.au/_data/assets/pdf_file/0006/1392999/Molonglo-Valley-Vegetation-Condition-Monitoring-Report-2018.PDF">https://www.planning.act.gov.au/_data/assets/pdf_file/0006/1392999/Molonglo-Valley-Vegetation-Condition-Monitoring-Report-2018.PDF</a>	2018
Independent Audit of the Molonglo Valley Strategic Assessment	<a href="https://envcomm.act.gov.au/wp-content/uploads/2020/08/Independent-Audit-of-the-Molonglo-Valley-Strategic-Assessment-5-June.pdf">https://envcomm.act.gov.au/wp-content/uploads/2020/08/Independent-Audit-of-the-Molonglo-Valley-Strategic-Assessment-5-June.pdf</a>	2018
Field Guide to Plants of the Molonglo Valley	<a href="https://www.environment.act.gov.au/cpr/field-guide-to-plants-of-the-molonglo-valley">https://www.environment.act.gov.au/cpr/field-guide-to-plants-of-the-molonglo-valley</a>	2018
Bushfire Risk Strategy Molonglo	<a href="https://www.planning.act.gov.au/_data/assets/pdf_file/0019/1251118/SUPP-201700027-EIS-REVISED-S211-EXEMPTION-FINAL-BUSHFIRE-RISK-STRATEGY-01.pdf">https://www.planning.act.gov.au/_data/assets/pdf_file/0019/1251118/SUPP-201700027-EIS-REVISED-S211-EXEMPTION-FINAL-BUSHFIRE-RISK-STRATEGY-01.pdf</a>	2016
Kama Interface Management Strategy	<a href="https://www.planning.act.gov.au/_data/assets/pdf_file/0012/1251111/SUPP-201700027-EIS-S211-EXEMPTION-Kama-Interface-Management-Strategy.pdf">https://www.planning.act.gov.au/_data/assets/pdf_file/0012/1251111/SUPP-201700027-EIS-S211-EXEMPTION-Kama-Interface-Management-Strategy.pdf</a>	2016
Ecological Management Guidelines	<a href="https://s3.ap-southeast-2.amazonaws.com/hdp.au.prod.app.act-yoursay.files/5515/1780/9501/Molonglo_River_Reserve_-_Ecological_Management_Guidelines.pdf">https://s3.ap-southeast-2.amazonaws.com/hdp.au.prod.app.act-yoursay.files/5515/1780/9501/Molonglo_River_Reserve_-_Ecological_Management_Guidelines.pdf</a>	2015
Domestic Animals (Cat Containment) Declaration 2015 (No 2)	<a href="https://www.legislation.act.gov.au/di/2015-58/">https://www.legislation.act.gov.au/di/2015-58/</a>	2015
Molonglo River Reserve (Kama) Operational Plan	<a href="https://s3.ap-southeast-2.amazonaws.com/hdp.au.prod.app.act-yoursay.files/3115/1780/8840/Kama_Operational_Plan.pdf">https://s3.ap-southeast-2.amazonaws.com/hdp.au.prod.app.act-yoursay.files/3115/1780/8840/Kama_Operational_Plan.pdf</a>	2014-2017
Molonglo River Reserve (Urban Section – “the Park”) Operational Plan	<a href="https://s3.ap-southeast-2.amazonaws.com/hdp.au.prod.app.act-yoursay.files/6215/1780/8767/Molonglo_River_Reserve_operational_plan.pdf">https://s3.ap-southeast-2.amazonaws.com/hdp.au.prod.app.act-yoursay.files/6215/1780/8767/Molonglo_River_Reserve_operational_plan.pdf</a>	2014-2017

Procedures Manual – Monitoring Vegetation and Habitat Condition	<a href="https://s3.ap-southeast-2.amazonaws.com/hdp.au.prod.app.act-yoursay.files/3715/1780/9312/Procedures_Manual_-_Monitoring_vegetation_and_habitat_condition.pdf">https://s3.ap-southeast-2.amazonaws.com/hdp.au.prod.app.act-yoursay.files/3715/1780/9312/Procedures Manual - Monitoring vegetation and habitat condition.pdf</a>	2014
Molonglo Adaptive Management Strategy	<a href="https://www.planning.act.gov.au/_data/assets/pdf_file/0020/1251119/SUPP-201700027-EIS-REVISED-S211-EXEMPTION-MOLONGLO-ADAPTIVE-MANAGEMENT-STRATEGY-01.pdf">https://www.planning.act.gov.au/_data/assets/pdf_file/0020/1251119/SUPP-201700027-EIS-REVISED-S211-EXEMPTION-MOLONGLO-ADAPTIVE-MANAGEMENT-STRATEGY-01.pdf</a>	2013
Technical Amendment to the Territory Plan No. 2012-24 (repealed), 2012	<a href="https://www.legislation.act.gov.au/ni/2012-411/default.asp">https://www.legislation.act.gov.au/ni/2012-411/default.asp</a>	2012
Molonglo Valley Stage 2 Planning and Design Framework	<a href="https://www.planning.act.gov.au/_data/assets/pdf_file/0004/894712/Molonglo_Valley_Stage_2_Planning_and_Design_Framework_-_Amended_Sept_2012_PDF.pdf">https://www.planning.act.gov.au/_data/assets/pdf_file/0004/894712/Molonglo Valley Stage 2 Planning and Design Framework - Amended Sept 2012 PDF.pdf</a>	2012
Molonglo River Park Concept Plan	<a href="https://www.planning.act.gov.au/planning-our-city/planning-studies/molonglo_river_park_concept_plan">https://www.planning.act.gov.au/planning-our-city/planning-studies/molonglo_river_park_concept_plan</a>	2012
Structure Plan Molonglo and North Weston	<a href="https://www.legislation.act.gov.au/DownloadFile/ni/2008-27/copy/61197/PDF/2008-27.PDF">https://www.legislation.act.gov.au/DownloadFile/ni/2008-27/copy/61197/PDF/2008-27.PDF</a>	2008
Territory Plan	<a href="https://www.legislation.act.gov.au/ni/2008-27/Current">https://www.legislation.act.gov.au/ni/2008-27/Current</a>	2008