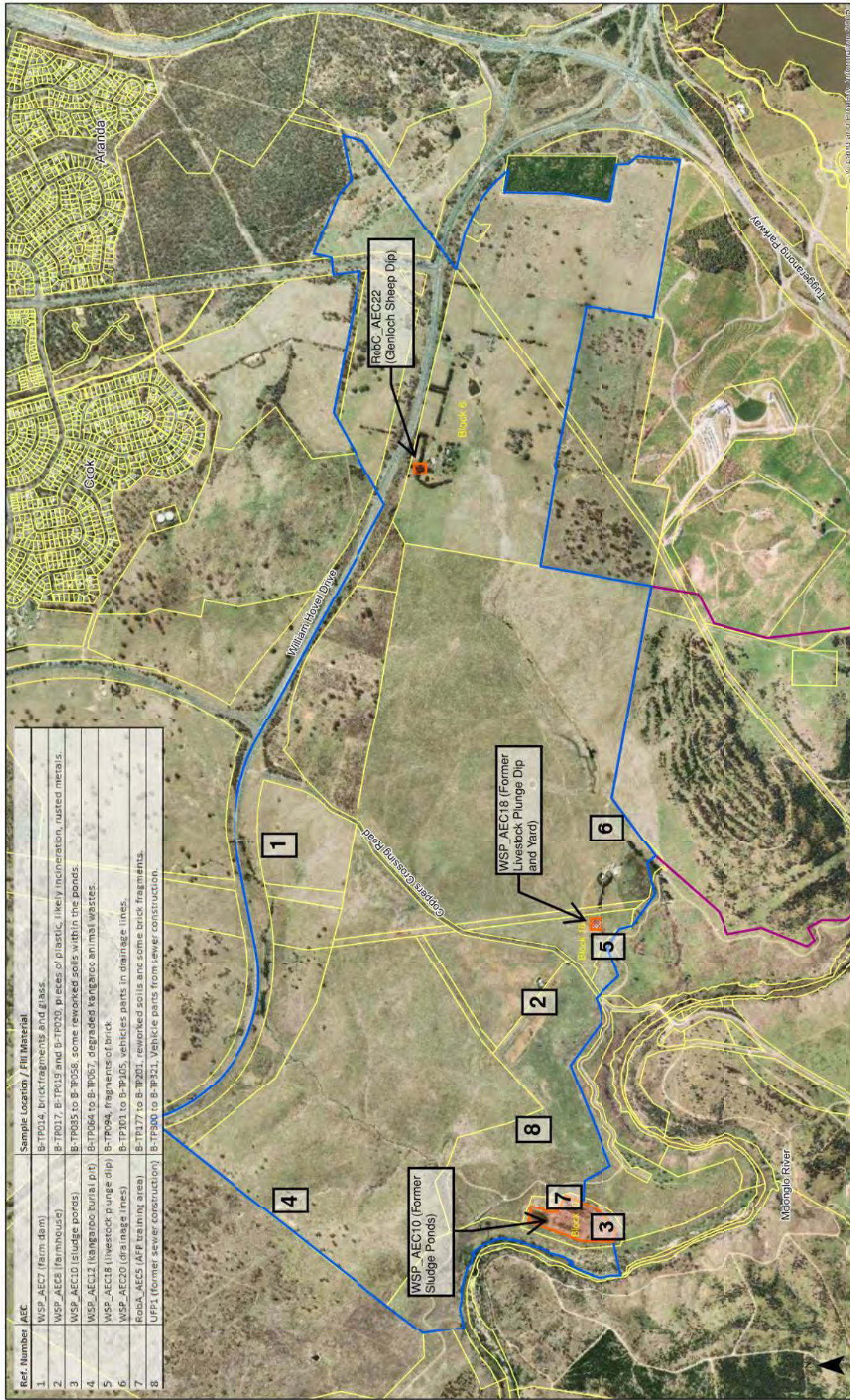


Report Figures from WSP (Feb 2017) DSI RAP



Ref. Number	AEC	Sample Location / Fill Material
1	WSP_AEC7 (farm dam)	B-TP014, brick fragments and glass.
2	WSP_AEC8 (farmhouse)	B-TP017, B-TP019 and B-TP020, pieces of plastic, likely incineration, rusted metals.
3	WSP_AEC10 (sludge ponds)	B-TP085 to B-TP088, some reworked soils within the ponds.
4	WSP_AEC12 (kangaroo burial pit)	B-TP064 to B-TP067, degraded kangaroo animal wastes.
5	WSP_AEC18 (livestock plunge dip)	B-TP094, fragments of brick.
6	WSP_AEC20 (drainage lines)	B-TP101 to B-TP105, vehicles parts in drainage lines.
7	RobA_AEC5 (AFP training area)	B-TP177 to B-TP201, reworked soils and some brick fragments.
8	UFPI (former sewer construction)	B-TP300 to B-TP321, vehicle parts from sewer construction.

Figure 2 - Area B Block Boundaries and Layout

2270207A - Remedial Action Plan
Māngonlo Valley Stage 3 (Area B)

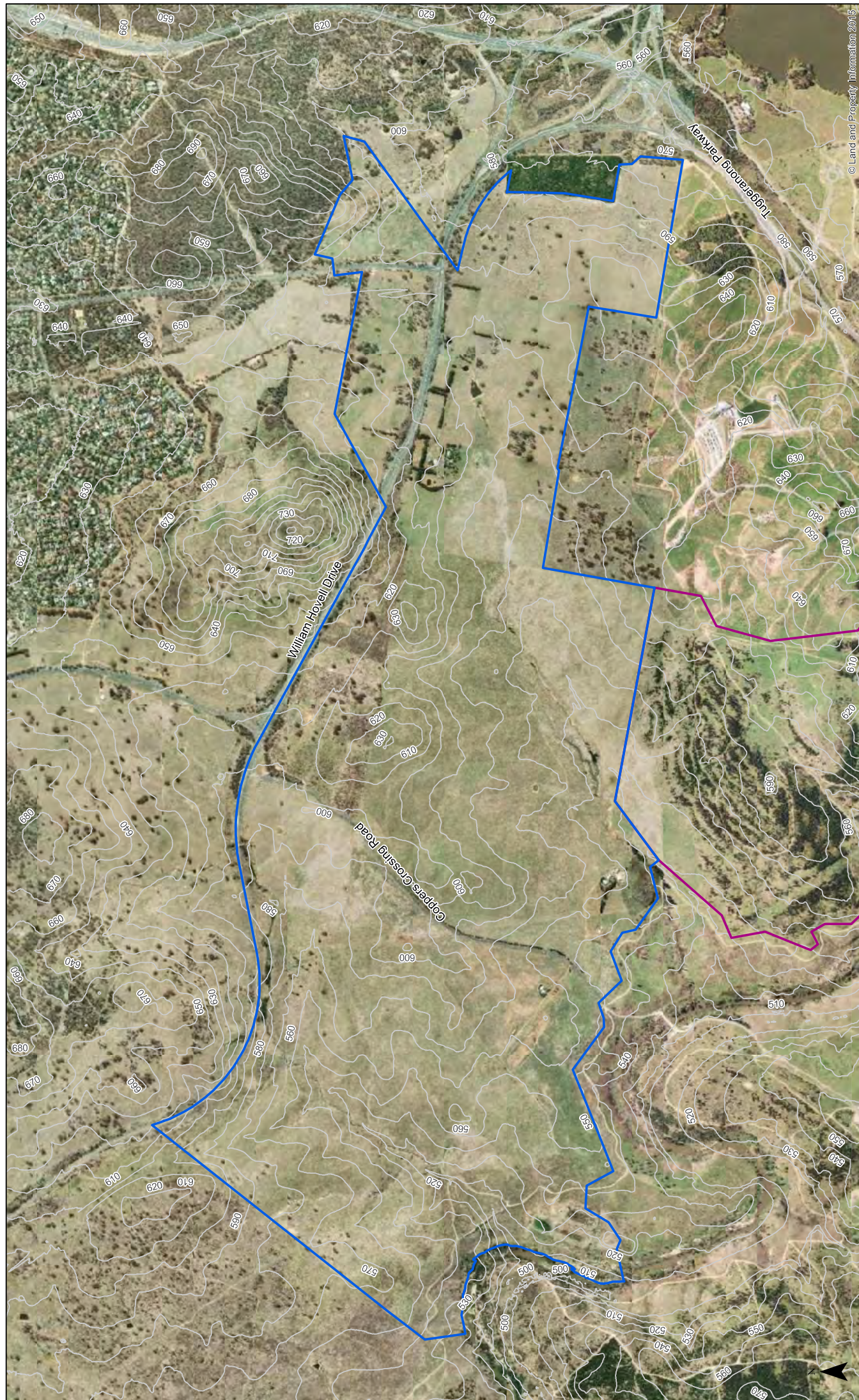
WSP_AEC10 (Sludge Ponds)
WSP_AEC18 (Livestock Plunge Dip)
RobC_AEC22 (Glenloch Sheep Dip)

Area A
Area B
Cadastre

Remedial Area
Locations with Fill Materials (refer to table)

600 300 0 600 Metres

Image Source: NSW Land & Property Information



© Land and Property Information 2015

Figure 3 - Area B 10m Contours and Topography
 2270207A - Remedial Action Plan
 Molonglo Valley Stage 3 (Area B)
 WSP_AEC10 (Sludge Ponds)
 WSP_AEC18 (Livestock Plunge Dip)
 Robc_AEC22 (Glentloch Sheep Dip)



- AreaB
- AreaA
- Contours_10m

Image Source: NSW Land & Property Information

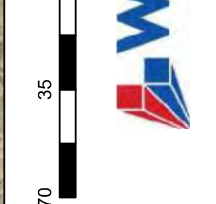


Figure 4 - Remediation Area WSP_AEC10
Former Sludge Ponds

2270207A - Remedial Action Plan
Molonglo Valley Stage 3 (Area B)

WSP_AEC10 (Sludge Ponds)
WSP_AEC18 (Livestock Plunge Dip)
RobC_AEC22 (Glenloch Sheep Dip)

70 35 0 70 Metres



Area A
Area B
Area B_AECs

Test Pit
Monitoring Well
Sediment
SoilBore
Surface Water

Remediation Area

Image Source: NSW Land & Property Information
Aerial dated: 21/2/2014



© Land and Property Information 2015

Figure 5 - Remediation Area WSP_AEC18 Livestock Plunge Dip and Yards
 2270207A - Remedial Action Plan
 Molonglo Valley Stage 3 (Area B)
 WSP_AEC10 (Sludge Ponds)
 WSP_AEC18 (Livestock Plunge Dip)
 RobC_AEC22 (Glenloch Sheep Dip)



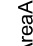


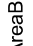

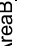

	AreaA		Test Pit		Remediation Area
	AreaB		Monitoring Well		
	AreaB_AECs		SoilBore		

Image Source: NSW Land & Property Information
 Aerial dated: 21/2/2014



© Esri and/or its licensors. All rights reserved.

Figure 6 - Remediation Area RobC_AEC22
Genoch Sheep Dip
 2270207A - Remedial Action Plan
 Molonglo Valley Stage 3 (Area B)
 WSP_AEC10 (Sludge Ponds)
 WSP_AEC18 (Livestock Plunge Dip)
 RobC_AEC22 (Genloch Sheep Dip)



- Hand Augur Soil Location August 2016
- Concrete Sheeps Dip Location / Drain Pan
- Test Pit
- Indicative Remedial Area (arsenic)
- Monitoring Well

Area A
 Area B
 Area B_AECs
 Image Source: NSW Land &
 Property Information
 Aerial dated: 21/2/2014