



Annual Compliance Report

Residential development, Block 9 Section 64, Watson, and extension of Negus Crescent (Justice Robert Hope Park) (EPBC 2012/6418)

01 July 2022 – 30 June 2023

August 2023

**Prepared by the Environment, Planning and Sustainable Development Directorate, on
behalf of the ACT Government**

This report demonstrates how the Suburban Land Agency (previously known as the Land Development Agency; the proponent), Deed Management and the ACT Parks and Conservation Service (PCS), all within the Environment, Planning and Sustainable Development Directorate (EPSDD), and Lonsdale 28 Pty Ltd have complied with the conditions in the approval decision for the development of the Residential development, Block 9 Section 64, Watson, and extension of Negus Crescent (EPBC 2012/6418). This covers the 2022-2023 reporting period from 01 July 2022 until 30 June 2023.

Specifically:

- The Deed Management section in EPSDD are responsible for complying with condition 1 in the approval decision
- Lonsdale 28 Pty Ltd are responsible for complying with conditions 2 and 4 in the approval decision
- PCS is responsible for complying with condition 3 in the approval decision, and
- All parties are jointly responsible for complying with conditions 5, 6, 7 and 8 in the approval condition.

In addition, this report also demonstrates how PCS has implemented the management plan for the Justice Robert Hope Park offset area on behalf of the Suburban Land Agency.

Declaration of Accuracy

In making this declaration, I am aware that sections 490 and 491 of the *Environment Protection and Biodiversity Conservation Act 1999* (Cth) (EPBC Act) make it an offence in certain circumstances to knowingly provide false or misleading information or documents. The offence is punishable on conviction by imprisonment or a fine, or both. I declare that all the information and documentation supporting this compliance report is true and correct in every particular. I am authorised to bind the approval holder to this declaration and that I have no knowledge of that authorisation being revoked at the time of making this declaration.




Signed:

Full Name: Stephen Alegria

Position: Executive Branch Manager, Parks and Conservation Service

Organisation: Environment, Planning and Sustainable Development Directorate

Date: 4 August 2023



Signed:

Full Name: Irena Sharp

Position: Program Director, Urban Development

Organisation: Suburban Land Agency

Date: 10 August 2023



Signed:

Full Name: Craig Weller

Position: Executive Branch Manager, Statutory Planning (including Deed Assessment)

Organisation: Environment, Planning and Sustainable Development Directorate

Date: 16 August 2023

Signed:



Full Name: Ben Comfort

Position: Development Manager

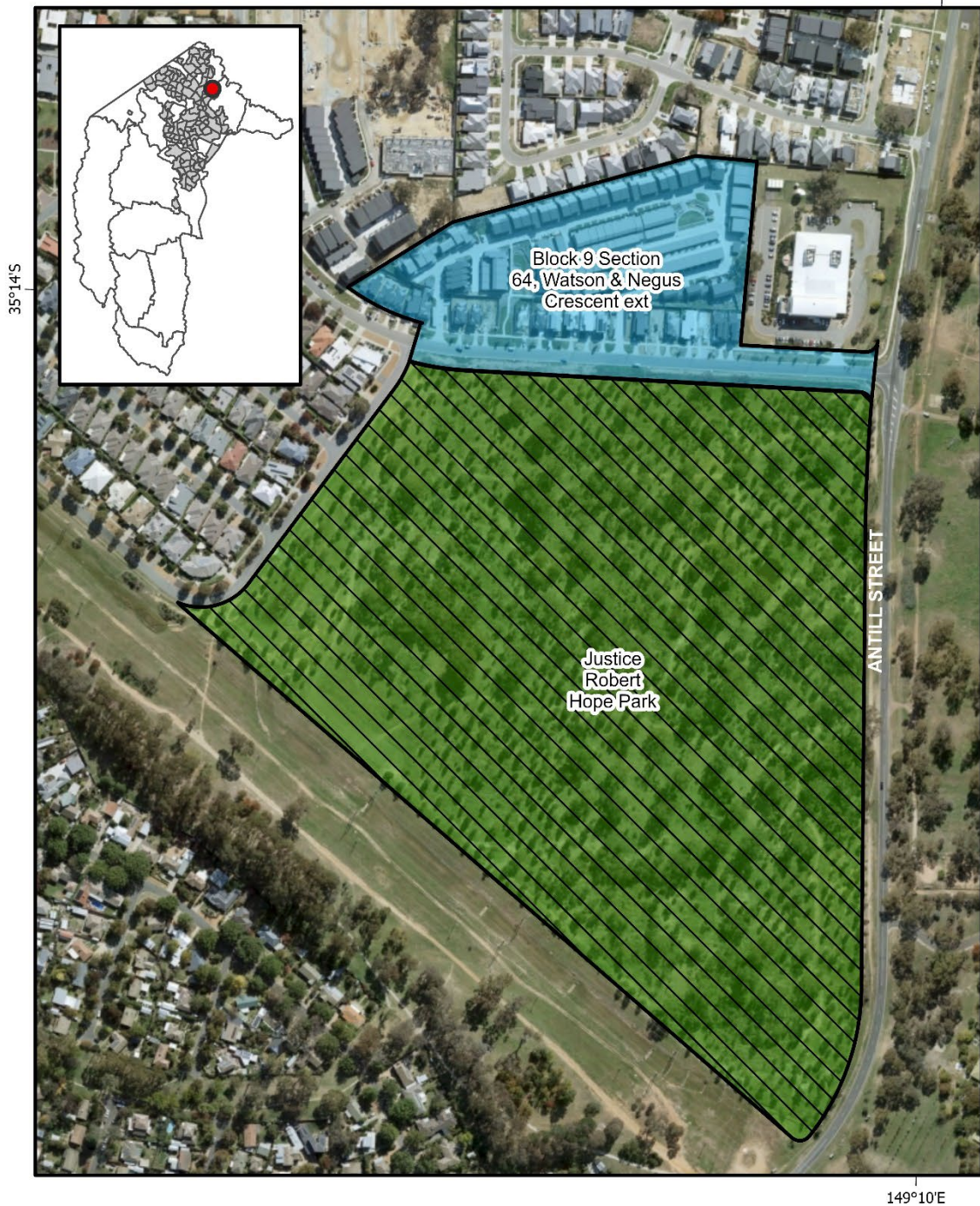
Organisation: Lonsdale 28 Pty. Ltd.





Date:

Contents

1. Location of the Justice Robert Hope Park offset area	4
2. Compliance with conditions in EPBC Approval Decision 2012/6418 during the 2022-23 reporting period	5
3. Implementation of the Offset Management Plan	11
4. Other Actions	17

1. Location of the Justice Robert Hope Park offset area



<p>EPBC 2012/6418</p> <ul style="list-style-type: none">  Offset Site  Associated Development  Nature Reserve 	<p>0.04 0.02 0 0.04 Km</p> <p>1:4,000 When printed at A4</p> <p>Coordinate System: GDA 1994 MGA Zone 55</p> <p>Prepared by: Environmental Offsets Team ACT Parks and Conservation Service Environmental Offsets PO Box 158 Canberra ACT 2601</p> <p>Printed: 14/07/2021</p>	 <p>© COPYRIGHT ACT Government 2021 All Rights Reserved</p> <p>Disclaimer: While all care is taken to ensure accuracy, the ACT Government does not warrant that the map is free from errors.</p> <p>Aerial Photography 2020</p>
--	---	--

2. Compliance with conditions in EPBC Approval Decision 2012/6418 during the 2022-23 reporting period

Condition Number	Condition	Responsibility	Compliant / Non-compliant / Not applicable	Description
1	<p>For the better protection of listed threatened species and communities and listed migratory species, the approval holder must ensure that the deed of agreement includes the following provisions:</p> <ol style="list-style-type: none"> Clearance of native vegetation on the development site must be no greater than 4.0 hectares. As many mature trees as practicable should be retained on the development site. All disturbances to Justice Robert Hope Park for the construction of the stormwater pipeline works must be contained within a 10-metre wide corridor. Prior to construction, a temporary fence, including sediment prevention measures, must be erected on the northern and eastern perimeters of the 10 metre wide corridor for the stormwater pipeline works to separate Justice Robert Hope Park from the construction disturbance and access. Stormwater pipeline works must take best efforts to avoid disturbance of any saplings. Where engineering constraints preclude this, and in consultation with local park-care groups and relevant parties, saplings must be replaced with an acceptable alternative and located at a distance from the stormwater 	Deed Management	Compliant	<p>Deed of Agreement reflected the EPBC Act requirements. A copy was provided to the Department on 21 November 2018.</p> <ol style="list-style-type: none"> Development Site is only 2.991ha (refer DP 10994). Development Site DA 201528681 approved on 28 February 2016. Approved Tree Management and Protection Plan Drawing D143 Rev 8 notes trees to be retained. Multi-unit site DA 201732196 approved on 14 December 2017 and approved further tree removals and tree protection as per Tree Management and Protection Plan DA 610 and DA 612. Fencing Control Plan required under the Deed was provided showing a 10-metre corridor for works in Justice Robert Hope Park (JRHP), including 1 pedestrian access gate. Fencing Control Plan required under the Deed was provided showing a 10-metre corridor for works in Justice Robert Hope Park, Pollution Control Plan was submitted and assessed as part of DA 201528681. Transport Canberra and City Services (TCCS) DRC design acceptance was achieved on 20 October 2016. The fencing control plans, staging plan and landscape management and protection plan approved in the EDPDA on 13 July 2016 was amended to address EPBC Act conditions and approved on 14 September 2016. TCCS DRC Operational Acceptance was issued on 24 October 2017. A TCCS Certificate of final acceptance was issued on 20 June 2023 for Civil Works and a TCCS

Condition Number	Condition	Responsibility	Compliant / Non-compliant / Not applicable	Description
	<p>pipeline works that shall not interfere with its effective operation.</p> <p>f. Within one month after construction of stormwater pipeline works, all areas disturbed by stormwater pipeline works must be rehabilitated to ensure restoration of natural soil profiles, topography and drainage and replanted with a combination of species representative of Box–Gum Grassy Woodland.</p> <p>g. A permanent fence with one pedestrian access gate must be erected on the boundary between Justice Robert Hope Park and the Negus Crescent road reserve prior to construction. During construction the access gate is to be locked to prevent unauthorised access to the development site.</p> <p>h. Drainage measures must be designed and implemented to ensure that no run-off from the development site during or after construction enters Justice Robert Hope Park except as conveyed in underground stormwater pipes.</p> <p>i. During construction, public access to Justice Robert Hope Park must be maintained at all times.</p>			<p>Certificate of Soft Landscape final handover was issued on 15 June 2023. A Final Certificate under the Deed of Agreement was granted on 23 June 2023.</p> <p>g. Refer to 1c above.</p> <p>h. Development site run-off conveyed into pit/pipes as per DA approval documentation. Existing overland flow paths were relied upon and the post development run-off was calculated as approximately 1/3 of the pre-development conditions.</p> <p>i. Public Access Plan submitted to Deed Management prior to commencement of construction confirms access to Justice Robert Hope Park is maintained at all times.</p>
2	The approval holder must provide the Department with a copy of the approved landscape plan and approved sediment control plan for the	Lonsdale 28 Pty Ltd	Non-compliant (Rectified)	Landscape plan and sediment control plan approved. Plans were not submitted within seven days but were provided in March 2018.

Condition Number	Condition	Responsibility	Compliant / Non-compliant / Not applicable	Description
	development site within seven days of each document's approval by the ACT Government.			
3	<p>To compensate for the loss of Box–Gum grassy Woodland at the development site, and for the better protection of listed threatened species and communities and listed migratory species, the approval holder must develop a Justice Robert Hope Park Environmental Management Plan (JRHPEMP) for the conservation and management of the Justice Robert Hope Park for the duration the impact occurs at the development site. The JRHPEMP must be submitted to the minister for approval within six months of substantial commencement at the development site. The JRHPEMP must include:</p> <ul style="list-style-type: none"> a. Details of an appropriate monitoring program to be undertaken by a suitably qualified expert, to monitor the condition of Box–Gum Grassy Woodland in Justice Robert Hope Park, including undertaking baseline surveys of condition at the date of this approval b. Measures to maintain the condition of Justice Robert Hope Park at a standard equivalent to or better than its condition at the date of this approval (as defined in the referral documentation and condition 3a), by such means as are necessary, including but not limited to: <ul style="list-style-type: none"> i. planting or seeding of native forbs and grasses consistent with 	Parks and Conservation Service	Compliant	<p>The draft Justice Robert Hope Park (JRHP) Offset Management Plan was due for submission to the Department of Environment and Energy on 29 February 2017 and was submitted on 28 February 2017.</p> <p>The final Justice Robert Hope Park Offset Management Plan, approved by PCS on 13 November 2018, was submitted to the Department on 14 November 2018. The Department approved the plan on 30th November 2018. The final plan was published on the ACT Government's Offsets Register in January 2019.</p> <p>Details of 3. a. through 3.e. are compliant, and details have been included in the JRHP Offset Management Plan.</p> <p><i>Condition 3.c. was revoked on 6 March 2017</i></p>

Condition Number	Condition	Responsibility	Compliant / Non-compliant / Not applicable	Description
	<ul style="list-style-type: none"> ii. the definition of EPBC Act listed Box-Gum grassy Woodland weed management to meet statutory obligations iii. planting of trees consistent with the definition of EPBC Act listed Box-Gum Grassy Woodland iv. control of feral and domestic animals, and v. Control of unauthorised access, waste and pollution. <p>c. <i>This condition has been revoked as per the approved variation by the Department of Environment and Energy on 06/03/2017.</i></p> <p>d. Consultation with local park-care groups and relevant parties over the proposed implications of management outlined in the JRHOMP</p> <p>e. Details of administration of funding arrangements with the relevant parties who will be responsible for managing Justice Robert Hope Park including a schedule of anticipated costs.</p>			
4	Within 20 days of substantial commencement of construction, the approval holder must advise the Department in writing of the actual date of commencement.	Lonsdale Pty Ltd 28	Non-compliant (Rectified)	The Department of Environment and Energy was formally notified of the date of substantial commencement on 29 November 2016. The actual date of substantial commencement was 29 August 2016.
5	The approval holder must maintain accurate records substantiating all activities associated with or relevant to the conditions of approval, and	Suburban Land Agency, Deed Management and	Compliant	Files are held by all parties responsible for compliance with the approval decision.

Condition Number	Condition	Responsibility	Compliant / Non-compliant / Not applicable	Description
	make them available upon request to the Department. Such records may be subject to audit by the Department or an independent auditor in accordance with section 458 of the EPBC Act, or used to verify compliance with the conditions of approval. Summaries of audits will be posted on the Department's website. The results of audits may also be publicised through the general media.	Parks and Conservation Service (within EPSDD) and Lonsdale 28 Pty Ltd		
6	By 30 August of each year after substantial commencement of the action, the approval holder must publish a report on their website addressing compliance with each of the conditions in this approval, including implementation of any management plans as specified in the conditions. Documentary evidence providing proof of the date of publication and non-compliance with any of the conditions of this approval must be provided to the Department at the same time as the compliance report is published. Non-compliance with any of the conditions of this approval must be reported to the Department within 10 business days of their identification.	Suburban Land Agency, Deed Management and Parks and Conservation Service (within EPSDD) and Lonsdale 28 Pty Ltd	Compliant	<p>This is the sixth report required for this development and associated offset and fulfils condition 6 of the approval decision.</p> <p>Previous Reports 2021-22 report: published 29 August 2022 (compliant) 2020-21 report: published 09 September 2021 (non-compliant; rectified) 2019-20 report: published 29 Sep 2020 (non-compliant (rectified)) 2018-19 report: published 29 Aug 2019 (compliant) 2017-18 report: published 28 Nov 2018 (compliant) 2016-17 report: published 28 Nov 2017 (compliant)</p>
7	Upon the direction of the Minister, the approval holder must, at its expense, ensure that an independent audit of compliance with the conditions of approval is conducted and a report submitted to the Minister. The independent auditor must be approved by the Minister prior to the commencement of the audit. Audit criteria	Suburban Land Agency, Deed Management and Parks and Conservation Service (within EPSDD)	Not applicable	No audit was requested.

Condition Number	Condition	Responsibility	Compliant / Non-compliant / Not applicable	Description
	must be agreed to by the Minister and the audit report must address the criteria to the satisfaction of the Minister.	and Lonsdale 28 Pty Ltd		
8	If, at any time after five years from the date of this approval, the approval holder has not substantially commenced the action, then the approval holder must not substantially commence the action without the written approval of the Minister.	Suburban Land Agency, and Lonsdale 28 Pty Ltd	Not applicable	The action has been commenced.

3. Implementation of the Offset Management Plan

The following table describes how the ACT Parks and Conservation Service (Environment, Planning and Sustainable Development Directorate) has undertaken the management actions described within the [Justice Robert Hope Park Offset Management Plan](#) for the 2022 – 2023 reporting season on behalf of the Suburban Land Agency (the proponent).

Activity	Description (from OMP)	Estimated Timeframe for Completion (as described in OMP)	Actions / Comments (from 01 July 2022 – 30 June 2023)
Activities Declaration	Prepare an Activities Declaration for the Justice Robert Hope Park (JRHP) Nature Reserve pursuant to the ACT Nature Conservation Act 2014.	2018-19	As part of the PCS signage upgrade project, activity declaration signs have been erected at each main gate into the offset area. A review of all Activity Declarations was undertaken to align these more fully to the Nature Conservation Act 2014 and current signage across reserve. This review has been submitted to the Conservator for approval in early 2023.
Consult with ACT Heritage Unit	Inform the ACT Heritage Unit of operational or habitat restoration works which could impact potential cultural heritage sites within the offset sites.	On-going	There are no known heritage sites listed within the reserve. Should any potential sites be located they will be reported through the correct avenues and appropriate actions for conservation of such sites will be added to the Offset Management Plan (OMP) as part of the first OMP review.
Cultural heritage assessment reporting and management requirements	Follow the guidelines outlined in the Cultural Heritage Reporting Policy (ACT Heritage Council 2015). This document details the cultural assessment and reporting requirements for projects that may impact on places or objects with indigenous or historic heritage value. Any discovery of an Aboriginal place or object will be reported to the Heritage Council within five working days.	On-going	No new sites have been discovered thus far.
Utility notifications	Follow the procedures required when planning works within the vicinity of utility infrastructure. Adhere to the Code of Practice between PCS and	On-going	No works were conducted during this reporting period. Guidelines and codes of practice are followed.

Activity	Description (from OMP)	Estimated Timeframe for Completion (as described in OMP)	Actions / Comments (from 01 July 2022 – 30 June 2023)
	ActewAGL (ERM 2009).		
Offset Management Plan review	This OMP will be reviewed and updated within six (6) months of the submission to the ACT Government of consultant reports prepared as part of the 2020 Box–Gum Woodland monitoring program (Section 5.1). The reviewed plan will be submitted to the Commonwealth Department of the Environment for approval. Until the revised plan is approved, the offset site will be managed in accordance with the [current] Plan.	Six months from completion of 2020 BGW monitoring report	This plan is due for review. OMP process is likely to commence during late 2023.
Fencing	Replace offset boundary fences and gates. Remove internal fencing. New fences to be installed using wildlife friendly specifications including kangaroo access gates.	2018–19 (completed 2017)	Fences have been maintained.
Tracks and trails	Construct new formed visitor discovery trail with track markers. Establish and maintain slashed management tracks	2019–20 On-going	Tracks have been continuously maintained. The new visitor trail was deemed unnecessary and would negatively impact woodland values. Instead, existing trails were improved and enhanced.
Reserve signage	Install large reserve signage and small “Dogs on leash” signs.	2018–19 (complete 2019)	Signage is complete and has been maintained as appropriate. This signage was installed in 2019 as a part of the PCS signage upgrade project and included activities declaration information.
Reserve signage	Replace existing interpretation signs.	2019–20 (complete 2019)	The reserve signage installed in 2019 includes interpretation information.
Waste	Waste will be removed from the offset site including old fencing materials and general litter as required.	On- going	On-going as required.

Activity	Description (from OMP)	Estimated Timeframe for Completion (as described in OMP)	Actions / Comments (from 01 July 2022 – 30 June 2023)
Weed control	<p>Target key weeds that are of a statutory obligation for control:</p> <ul style="list-style-type: none"> – African Lovegrass – Woody weeds – Chilean Needlegrass – Paterson’s Curse – Scotch Thistle – Serrated Tussock – St John’s Wort <p>Spot spraying is the preferred method of control in conjunction with slashing in areas of dense weed infestations.</p> <p>All weed control efforts to be mapped and reviewed annually to monitor effectiveness of weed control program.</p>	Annually	<p>Weed control has continued as required – undertaken by suitably qualified contractors. Additional weed control is also undertaken by the Watson Woodlands Working Group (WWWG) volunteers.</p> <p>In 2022/23, weed control undertaken in the offset area included: Serrated Tussock, African Lovegrass, St. John’s Wort, Broadleaf, and Chilean Needlegrass.</p> <p>A Phalaris control trial established in autumn 2017 is ongoing. The aim of the trial is to expand on small-scale trials, previously done by the WWWG, which sprayed out small areas (a few square metres at a time) of introduced grasses and re-seeded them with kangaroo grass. The aim is to determine whether this method is applicable to broader scale rehabilitation of old Phalaris stands back to native pasture.</p>
Invasive animals	<p>Control rabbits in line with ACT Pest Management Strategy.</p> <p>Coordinate the above activities with those in the Mount Majura Nature Reserve if practicable.</p>	Annually	<p>Rabbits were monitored in Spring and Autumn.</p> <p>Additional population monitoring for rabbits, foxes and cats was conducted through camera trapping.</p> <p>Rabbit numbers remain stable and under threshold for undertaking large control programs.</p> <p>Warren fumigation was undertaken as required for rabbit population controlled.</p>
Revegetation	<p>Native grass seed to be used for revegetation as appropriate.</p> <p>Shrubs characteristic of Box Gum Woodland communities are to be planted to the higher benchmark within the offset site to improve bird habitat.</p>	<p>2016–17 (completed)</p> <p>2018–19 (completed)</p>	<p>Plantings were maintained.</p> <p>Direct seeding was conducted for restoration of Phalaris area in previous years – these trial plots were maintained and have been expanded in 2021/22 and 2022/23.</p> <p>Native seed collection was conducted for restoration projects in previous</p>

Activity	Description (from OMP)	Estimated Timeframe for Completion (as described in OMP)	Actions / Comments (from 01 July 2022 – 30 June 2023)
	<p>Revegetate around the storm water settling pond with aquatic plants to maintain frog habitat.</p> <p>Temporary fencing or guards to be erected around revegetation to protect from grazing.</p>		<p>years.</p> <p>Kangaroo exclusion fencing to support and expand successful groundcover restoration plots is continuing.</p> <p>During this reporting period, approximately 200 plants were planted comprising <i>Acacia dealbata</i>, <i>A. melanoxylon</i>, <i>A. rubia</i> and <i>Bursaria spinosa</i>. These species were planted to increase shrubs characteristic of BGW and provide food sources to species such as the regent honeyeater and superb parrot.</p>
Woody debris relocation	If available, woody debris will be sourced from the Development site and placed appropriately in consultation with the WWWG.	2016-17 (completed)	<p>Trees felled (as per multi-unit site DA 201732196 approved on 14 December 2017) were utilised to create frog habitat in the two dams in the reserve. This was a part of a larger dam restoration project completed in 2019. Two woody debris logs were sculpted into bench seats.</p> <p>No 2022/23 update.</p>
Increasing habitat for hollow nesting animals	Investigate options to increase the nesting habitat for birds and arboreal mammals.	2018–19	<p>Conducted as appropriate.</p> <p>Expert advice is that enhancing mid-storey structure and providing feed plants is the best approach for increasing habitat for threatened hollow nesting animals that occur on site, i.e. superb parrot.</p> <p>As per the annual Operational Plan, mid-storey shrubs have been planted for Superb Parrot feed trees.</p> <p>During this reporting period, approximately 200 plants were planted comprising <i>Acacia dealbata</i>, <i>A. melanoxylon</i>, <i>A. rubia</i> and <i>Bursaria spinosa</i>. These species were planted to increase shrubs characteristic of BGW and provide food sources to species such as the regent honeyeater and superb parrot.</p> <p>Increasing nesting habitat through interventions, such as nest boxes, is not advised due to their high likelihood of attracting exotic hollow</p>

Activity	Description (from OMP)	Estimated Timeframe for Completion (as described in OMP)	Actions / Comments (from 01 July 2022 – 30 June 2023)
			competitors (e.g. common myna, European honeybee) and predators (including arboreal mammals).
Water quality and frog habitat	Water quality testing will be completed monthly using Waterwatch guidelines. Frog populations within the offset site will be monitored annually in accordance with the Frogwatch Census method.	Annually	Water quality testing is conducted regularly (monthly) by one of the WWWG volunteers and data is submitted to ACT Waterwatch and is uploaded to the Atlas for Living Australia. Frog Watch activities are planned for future years. <i>Poa labillardierei</i> and <i>Carex appressa</i> were planted in drains to filter water coming off roads and improve dam water quality.
Box–Gum Woodlands mapping	Engage a suitably qualified expert to map the extent and condition of Box–Gum Woodland within the reserve.	2017 (complete), 2027 and 2033	Mapping of condition classes within the Box–Gum Woodland community was undertaken in 2016-2017 by a suitably qualified consultant. The report is published on the PCS offsets website .
Box–Gum Woodlands monitoring	Engage a suitably qualified expert to undertake monitoring of existing plots within the Box–Gum Grassy Woodlands community (as described in Table 9). PCS ecologists to review monitoring data to identify any changes occurring over time within the Box–Gum Woodland community.	2017 (complete), 2018 (complete), 2019 (complete), 2020 (complete), 2023, 2026, 2029 and 2032.	Existing plots were monitored in 2018, 2019 and 2020 for BGW condition. BGW attribute monitoring will be undertaken again in 2023. An analysis of monitoring data is currently being undertaken to produce baseline values for this site. This will allow tracking of trends and whether the site is maintaining or improving in ecological condition. Floristic monitoring was undertaken by offsets in-house ecologists in 2018, 2019 and 2020. This will occur in 2023/24 reporting period. Understorey structure and weed monitoring will continue annually at the site to inform grazing, fire, and other management programs. Understorey and weed monitoring were commenced in 2018 and continued annually.
Hoary Sunray monitoring	PCS staff to establish baseline data and undertake monitoring of the Hoary Sunray population. PCS staff will map the extent of Hoary Sunray populations within the offset site at each monitoring event to ensure change over time in extent of the	2017 (complete), 2020 (completed in 2021), 2023, 2026, 2029 and 2032.	Baseline data for the Hoary Sunray populations was collected by PCS staff in October 2017 and March 2021. 2020 surveys were delayed due to COVID19 lockdowns. Hoary Sunray population monitoring is planned for collection in the next reporting period in 2023/24. 2017 Methods: The boundaries of each of three patches of Hoary Sunrays were mapped, and counts undertaken by randomly placing 1m ² quadrats

Activity	Description (from OMP)	Estimated Timeframe for Completion (as described in OMP)	Actions / Comments (from 01 July 2022 – 30 June 2023)
	population can be assessed.		throughout each patch to gain a representative average count. 2021 methods: total count of population.
Photo monitoring	To be undertaken as part of the Box–Gum Woodland monitoring. Photo monitoring points will be established in the Offset Area, co-located with the vegetation monitoring plots. These points will assist to assess change over time and will help to determine the effectiveness of active management of interventions such as gully erosion control, weed control, regeneration and revegetation (if appropriate).	2016 (complete), 2018 (complete), 2019 (completed), 2020 (completed), 2023, 2026, 2029, and 2032	This was undertaken as part of the Box–Gum Woodland monitoring, with 2016 and 2018 complete. It will be completed again as part of woodland attribute surveys in 2023/24 reporting period. Standard photo-points were undertaken in 2018 - 2022 and will continue annually as part of the understorey vegetation monitoring. On site there are 15 photo monitoring points associated with vegetation monitoring plots.
Staffing	To deliver the actions outlined in this plan, resources have been secured to support a part-time (approx. 0.3 FTE) Senior Ranger (Ranger Grade 3) position and vehicle.	On-going	A permanent Senior Ranger Grade 3 (R3) officer was recruited to deliver the actions of this plan on 1 October 2015. JRHP offset is one of multiple offset areas managed by the ranger and expenditure on salary is weighted accordingly.
Training	All personnel, including contractors, involved in managing the offset site must be trained in the requirements and appropriate management of Box–Gum Woodlands.	As needed	Training conducted as needed.

4. Other Actions

Below are other actions that have been undertaken in relation to the site, as well as notable results.

Activity	Description	Actions / Comments
Restoration	<i>Eucalyptus blakelyi</i> dieback management	Soil testing and tree assessments for <i>Eucalyptus blakelyi</i> dieback management were conducted in previous years. An ecological burn planned for 2020-21 has been delayed for the following reporting years due to inappropriate site conditions (wet weather) alongside covid restrictions. Future burns will be considered as necessary.
Monitoring	Annual woodland bird monitoring following the methods outlined in the 2018/19 and 2019/20 Annual Monitoring Reports	Woodland birds are being monitored by suitably qualified in-house ecologists as part the woodland bird monitoring program. This monitoring is consistently undertaken seasonally (every three months, four times a year), and was completed in 2018, 2019, 2020, with 3-year baseline data collection completed in Winter 2021. Future survey intervals are to be decided, with 3 or 5 yearly survey intervals likely.
Kangaroo Population Management	Ainslie Majura Kangaroo Unit	This area is included in the Ainslie Majura Kangaroo Management Unit. Herbage Mass monitoring was undertaken in Spring 2022 and kangaroo population monitoring was undertaken in Summer 2022/23. Kangaroo management was undertaken on ACT Government managed land in this KMU in Winter 2023 in accordance with the Eastern Grey Kangaroo: Controlled Native Species Management Plan. Note: population management is not undertaken within the boundary of Justice Robert Hope Park.